



## THE LANCASHIRE FAMILY HISTORY & HERALDRY SOCIETY

Formerly Rossendale Society for Genealogy & Heraldry (Lancashire)

Inaugurated 1973. Registered Charity Number 513437

President: Stephen J. Ward

Vice-Presidents: Rodney Hampson, Terry Walsh, Tony Foster, Margaret Purcell, John Dalton

**Visit our Website on [www.lfhhs.org.uk](http://www.lfhhs.org.uk)**

Subscriptions:

Ordinary Membership £14      Family Membership £15      UK Pensioners & Students £12

### **Overseas Membership from 2022 = Members choosing electronic journals**

Pensioner £12 (one year) £36 (3 years), Non-pensioner £14 (one year) £42 (3 years)

Family £15 (one year) £45 (three years)

### **Overseas Membership choosing the paper journal = £20 (one year), £60 (3 years)**

**Renewals are due on the 1st January. Cheques should be crossed and made payable to Lancashire Family History & Heraldry Society and sent to the Membership Secretary.**

---

### **MEETING VENUES**

<b>BLACKBURN &amp; DARWEN</b>	Ewood Park Working Mens' Club, 318 Bolton Road, Blackburn BB2 4HY First Thursday of the month at 7.30 pm.
<b>BURY</b>	<b>St. Francis House, adj to All Saints Church, Throstle Grove, Brandlesholme, Bury BL8 1DL – CHECK BRANCH NEWS</b> <b>Second Wednesday of the month. Afternoons or Evenings.</b>
<b>CHORLEY</b>	Cunliffe Hall (Chorley Masonic Hall), Cunliffe Street, Chorley PR7 2BE <b>Second Wednesday of the month doors open at 7.00 pm.</b>
<b>FYLDE</b>	St. Martin's Church, Fleetwood Road South, Carleton, Poulton-le-Fylde FY6 7NL <b>First Wednesday</b> of the month at 7.30 pm.
<b>HERALDRY GROUP</b>	LFHHS Resource Centre, 2 Straits, Oswaldtwistle, Accrington BB5 3LU
<b>HYNDBURN</b>	<b>LFHHS Resource Centre, 2 Straits, Oswaldtwistle, Accrington BB5 3LU</b> <b>Doors open 6.45pm ready for 7pm start.</b>
<b>IRISH ANCESTRY GROUP</b>	2 Straits, Oswaldtwistle BB5 3LU Saturday Workshops 1 pm – 4.30 pm as per Branch Programme.
<b>LANCASTER &amp; MORECAMBE</b>	Morecambe Heritage, Unit 29 Arndale Centre, Morecambe LA4 5DH <b>First and third Friday 11 am – 4 pm</b>
<b>LONDON &amp; SOUTH</b>	St. Stephens' Church Hall, 48 Emperors Gate, Kensington, London SW7 4HJ Five meetings a year on Saturdays at 2.00pm (see Branch Programmes)
<b>PENDLE &amp; BURNLEY</b>	Colne Library, Colne BB8 0AP Third Wednesday of the month at 7.30 pm.
<b>PRESTON</b>	Kingsfold Methodist Church, Padway, Penwortham, Preston PR1 9EJ Last Wednesday of the month at 7.30 pm.
<b>ROCHDALE</b>	St. Andrew's U.R. Church, Entwisle Road, Rochdale OL16 2HZ Last Wednesday of the month at 7.30 pm.
<b>ROSSENDALE</b>	Longholme Methodist Church (opp. Bus Stn) Bacup Road, Rawtenstall BB4 7NU First Wednesday of the month at 7.30 pm.
<b>VIRTUAL BRANCH</b>	Second Tuesday of the month at 7.00pm Online via Zoom

## CONTENTS

Page	4	Branch Programmes and More <u>Members' Articles</u>
	10	Military Interest Group from the Western Front Association – Mike Coyle
	12	It's a small world – Sue Foster
	14	GOV.UK Marriage Ceremonies from 4 May 2021
	15	Preston Winckley Football Club c1907-1910 – Bill Grime
	16	My Cousin Iona Do Amaral Evans (nee Mackenzie) – Bill Grime
	23	War Memorials in Danger – Mike Coyle
	24	Deaths Notified
	26	Book Reviews
	29	Notes and News
	30	Branch News
	43	Members' Interests

### *Front Cover Picture:*

The Colne Co-operative Roll of Honour, now located at Colne Library.

### *Rear Cover Picture:* Father Christmas

Pull out centre pages – Membership Renewal Form 2023  
If you have a drawing or photo suitable for the front cover, kindly forward to the Editor. Thank you.

---

All contents of this magazine are copyright of Lancashire Family History and Heraldry Society and individual authors. No such content may be reproduced in any form unless prior permission to do so has been given by the Editor and the author/authors concerned.

**When sending items or articles for inclusion in the journal it is now necessary for you to give permission to print your e-mail or contact details. Thank you.**

# **YOUR SOCIETY NEEDS HELP!**

In particular, for a

## **Publicity and Social Media Officer**

Social Media is having a massive impact on how we all do things.

Our **Lancashire Family History & Heraldry Society** is looking for someone who could help us make better use of Social Media and our Publicity activity.

We have a draft Job Description for the role, but giving the incumbent the opportunity to write their own.

If you think you can help us, please contact our

**Secretary, Jayne Dixon**

E-mail: [secretary@lfhhs.org.uk](mailto:secretary@lfhhs.org.uk)

**NEWS FOR MEMBERS ELECTING TO  
RECEIVE THE QUARTERLY JOURNAL  
ELECTRONICALLY**

The Society has been using Mailchimp to send an email alerting members to the publication of the latest quarterly journal.

We have received feedback and understand that these emails may not have been successfully delivered to all members and we apologise to those affected.

As we believe the issue may be due to Mailchimp and the possibility of this method of communication going to spam boxes or otherwise being somehow blocked, we have decided that from now on we will send a conventional email to the address that we hold.

**IF YOU HAVE CHANGED YOUR EMAIL ADDRESS, PLEASE LET ME KNOW.**

We do welcome feedback – thank you!

Sue Foster  
Membership Secretary  
Email: [lfhhs.membership@btinternet.com](mailto:lfhhs.membership@btinternet.com)

## BRANCH PROGRAMMES

- 30 Nov Preston – Christmas Party and Jacobs Join  
30 Nov Rochdale – Christmas Party  
1 Dec Blackburn & Darwen – Christmas Party and speaker  
7 Dec Chorley – Quiz and hot pot  
7 Dec Fylde – Quiz Night  
13 Dec Virtual talk on Zoom @ 7pm – UK Calender Customs –  
Daphne Atkinson  
28 Dec Preston – No meeting  
Dec Rochdale – No meeting

### 2023

- 4 Jan Fylde – Spellbound over Fylde and Wyre –  
Countryside a stone’s throw from the seaside –  
Gordon and Ann Sharp  
11 Jan Chorley – Members Brick Walls  
25 Jan Preston – Tales and photos of Preston –  
Keith Johnson (Lancashire Evening Post)  
25 Jan Rochdale – Charles Hardwicke – Andrew Hardwick  
1 Feb Fylde – Lancaster Castle – Dr Colin Penny  
11 Feb Irish Group – Advice and Research  
22 Feb Preston – History of ROF Chorley –  
Lindsey Barrow  
22 Feb Rochdale – Research Evening  
1 Mar Fylde – AGM  
29 Mar Preston – Sounds and Voices of the Trenches –  
David Butters  
8 Apr Irish – Advice and Research.
-

## **SOCIETY TALKS BY ZOOM 2022 THE STORY SO FAR**

**Contact: Marian Crossley  
e-mail: [mariancrossley74@gmail.com](mailto:mariancrossley74@gmail.com)  
for more information or check our website.**

Thankfully we have had a number of extremely interesting talks during the first portion of 2022. It is great that so many of you continue to use us.

January – Dr Ann Featherstone told us the story of Pantomime.

February – In this month of romance we learnt about Breach of Promise with Denise Bates.

March – Nigel Callaghan took us on a rousing tour of the 'Hallelujah Ladies' of Wales who were responsible for helping the Salvation Army to develop.

April – We visited Medieval House and Country House with John Vigar, learning about the culture and fashion up to the 20th Century,

May – For those of you who live in an older house Gill Blanchard took us on a trip to show how to uncover who lived in it and what else it was used for.

June – Dr Colin Chapman took us on a tour of the Church Court where we found out about the many and varied antics our predecessors got up to.

July – A slight change of subjects this month. Freddy Nafel took us on a tour of Jewish History including the Holocaust and how current social media treats the Jewish People, a very thought-provoking presentation.

August – We learnt about a 5 generation Anglo Indian family living in the British Raj over 200 years with Jenny Malin.

September – Who knew about this series of tunnels under the streets of Liverpool?

Whilst these talks may be recorded and made available on LFHHS YouTube channel for approximately 2-3 weeks after the talk, please understand that sometimes recording is not allowed due to copyright issues.

Looking forward to the rest of the year. Delighted to say that after about 10 years of searching I have managed to find someone to talk to us about Traveller culture and traditions.

In November the talk is the History of the Commonwealth War Graves Commission by a speaker from the Commission.

In December we are going to be thinking about UK Calendar Customs, and some of the strange traditions associated with them.

**Hopefully you will be able to join us on the 2nd Tuesday of the month at 7pm sometime.**

You can find the details of the talks on the Society Website, LFHHS Branches / Society Virtual Branch to find details of the talks

(lfhhs.org/branch.php?br=15&osCsid=4333b4a196c6663afd6000ffb52aab15)

We send out full joining details approximately a week before each talk, but until February 2023 (when you should have all renewed your membership) you will be able to access the talks via <https://zoom.us/> using the information below.

Meeting ID: 846 0956 6223

Passcode: 859954



In the next couple of months I am about to start planning for 2023. It is important that we offer a variety of subjects of interest to everyone so if you know of a good speaker on a 'family history ish' subject who can do Zoom please let me know.

My contact details are: [mariancrossly74@gmail.com](mailto:mariancrossly74@gmail.com)

---

## **RAMBLINGS FROM THE EDITOR**

Seasons Greetings to all members. However you choose to celebrate Christmas and New Year, stay safe.

Members seem to be using the online forum more, and not for just questions and answers. Only the other day as I was glancing through the titles, I found some interesting observations about Libraries and newspapers online, worth passing on to members who do not use the forum –

“You can look at current newspapers and magazines online at home with Pressreader – you just need your library card number. Family Tree magazine is available for instance. I didn’t realise this until quite recently. I also use the mobile library which comes virtually to my door. A long time ago when I was a student, I used the library because it was warm and we couldn’t afford the heating in our accommodation. Long live libraries.” – Carole

“I was told that FmP doesn’t have the full newspaper archive, so if you use it a lot it’s worth subscribing to the British Newspaper Archive as well, but you can look at the BNA without subscribing, you just can’t get the full articles.

Libraries closing down is a massive thing, with wide-ranging repercussions. It seems that some years ago a decision was made in high places that everyone needed access to

computers, for all sorts of essentials such as claiming benefits, job-hunting, paying bills etc. so computers would be made available in all public libraries. Not sure how people are supposed to manage if libraries are no longer there! Even ones what stay open are cutting back on the resources they can offer. And as ever, it's the less well-off that suffer most.

So please, everyone, use your local library, if you still have one, as much as possible. Borrow loads of books. Use the facilities. Check out what is available. Keep libraries open!!!" – Pat

"I quite agree with Pat about library closures. In addition, they are cutting down on the sites to which they subscribe. Hampshire used to subscribe to Ancestry and to Find My Past and, many years ago, to what was then 19th Century Newspapers Online. The last disappeared a long time ago for us and a few years ago they decided not to subscribe to Ancestry. I can't see the situation improving any time soon, as the Councils are all trying to reduce costs.

On a more positive note, the newspaper coverage at Find My Past is identical to that on the British Newspaper Archive. It is just that the search facility is much better on the BNA. If you have a FMP subscription, the answer is to use the BNA site search to find a likely article, to make a note of the newspaper, date, etc. and access the image on FMP." – Beth

Thank you, ladies, for your observations. Much appreciated.

'In days of olde' when the only way to search census records, we had to book a 2-hour slot to use the microfilm reader in our local Library, but with the Census Index (usually compiled by Family History Societies or Groups or W.I. etc) you knew the page numbers your family surname was on, it was possible then to check the other families living in the vicinity. Agreed it was time consuming but it was possible to locate other relatives you were not aware of. You were not working on your own either, there were usually 3 or 4 readers in a row, and so there was always someone else there to help if you had a query.

Then along came Ancestry and you just entered a name and up came the whole household. Gone was the search and find element of family history, when you felt you had achieved something by your own merits and diligence.

Who makes their own home brew? I came across this recipe in one of Joan Langford's books about Farington, Leyland and the cotton workers c1939, when Nettle Beer was a very popular drink –

### 1939 Nettle beer recipe

2 lbs nettles (should be young nettle leaves)

Handful of dandelion leaves

1/2d worth of yeast

2 quarts of water

Brown sugar to taste

1 teaspoonful of ground ginger.

### Method

1. Wash the leaves and place them in a pan with sufficient water to cover them.
2. Boil for about 20 minutes. Strain and sweeten.
3. If too strong dilute with some cold water.
4. When almost cold add the yeast and ginger and let it 'work' for about 3 hours.
5. When all has risen skim off the top.
6. Put the remaining liquid into dry screw top bottles, and leave for 24 hours before using.
7. Keep in a cool place.

Between the wars my grandmother sometimes found the need to send out her daughters, wearing gloves, to collect nettles so she could make a stew or broth to feed her large family.

Do you think such recipes will become popular or necessary in today's financial climate? Interesting thought!

**Don't forget to renew your Society Membership for 2023. There is a pull-out form in the middle of this journal, or you can renew online through the website if preferred.**

---

## **MEMBERS' ARTICLES**

### **MILITARY INTEREST GROUP FROM THE WESTERN FRONT ASSOCIATION**

By Mike Coyle

We have received many requests from numerous members to resume the very popular Monday evening webinars that we undertook during the 'Covid' lockdown period. Although we paused these over the summer months, we feel that once the clocks go back and therefore the evenings get much longer, it may be worth resuming these, but not on a weekly basis.

As a result, we have arranged for the following webinars to take place at **8pm UK time on Monday evenings.**

These will generally be fortnightly, but we will start off (in the run up to the Armistice anniversary) on a weekly basis. We believe these will prove to be popular, but if the take up is low, it may be necessary to review whether we undertake more of them – as you will appreciate there's a substantial amount of work involved in laying these on.

#### **Monday 31 October – The Flying Sikh – Hardit Singh Malik, the RFC and the First World War**

From his arrival in the UK alone in 1908 as a fourteen-year-old, to Balliol College, Oxford and into the Royal Flying Corps during the First World War, Hardit Singh Malik lived an extraordinary life, often in the face of great adversity, yet always with charm

and good humour. He played cricket for Sussex and was an Oxford blue in golf, playing with the Prince of Wales.

This presentation by Stephen Barker describes Hardit Singh Malik's fascinating story.

### **Monday 7 November – The Coal Black Sea: Winston Churchill and the Worst Naval Catastrophe of the First World War**

On the morning of 22 September 1914, just six weeks into the First World War, three Royal Navy armoured cruisers were sunk by a German U-boat in the southern North Sea. The action lasted less than 90 minutes but the lives of 1,459 men and boys were lost – more than the British losses at the Battle of Trafalgar or in the sinking of RMS Lusitania. Yet, curiously, few have ever heard of the incident.

Using a range of official and archival records, Stuart Heaver exposes this false narrative and corrects over a century of misinformation to honour those who lost their lives in the worst naval catastrophe of the First World War.

### **Monday 14 November – Investigating the Australians at Pozieres**

The victorious capture of the village of Pozieres on 23 July 1916 won the 1<sup>st</sup> Anzac Corps a reputation as a competent and polished formation, but a closer examination of ongoing activity along the Pozieres Ridge indicates that this is anything but the case. The lessons learned were deeply flawed, and indicative of the desperate nature of fighting on the Somme.

Dr Meleah Hampton was until recently a historian in the Military History Section, Australian War Memorial. She is a graduate of the University of Adelaide and completed her PhD with a thesis on the 1916 battles for Pozieres and Mouquet Farm. Her primary interest is in the operational conduct of the First World War on the Western Front.

We are very grateful for Meleah offering to undertake this webinar from Australia in what will be – for her – the early hours of the morning!

## **Monday 28 November – The Searchers: The Quest for the Lost of the First World War**

By the end of the First World War, the whereabouts of more than half a million British soldiers were unknown. Most were presumed dead, lost forever under the battlefields of northern France and Flanders.

In this webinar, Robert Sackville-West brings together the extraordinary, moving accounts of those who dedicated their lives to the search for the missing. These stories reveal the remarkable lengths to which people will go to give meaning to their loss and the exhumation and reburial in military cemeteries of hundreds of thousands of bodies.

The Western Front Association very much hope that you will welcome the return of Monday evening webinars – and we look forward to seeing you at these!

To register for these webinars, click the link on the original e-mail on the [LFHHSForum@groups.io](mailto:LFHHSForum@groups.io)  
Or E-mail: [webinars1@westernfrontassociation.com](mailto:webinars1@westernfrontassociation.com)

---

### **IT'S A SMALL WORLD!**

By Sue Foster, LFHHS Membership Secretary

A while ago, I was sitting with 2 Officers of the Society, Steve and Mike. Mike had just visited the RAF museum near Cambridge and was saying how he saw a Catalina flying boat. Mike said that during WW2 his father had trained to be a pilot in the USA but disappointingly was later found to suffer from air sickness. He became an instrument technician on Catalinas, stationed on Sullen Voe in Shetland. Mike's father was always

very proud of his association with the Catalina and he and his family continued that interest.

Steve then explained that his father had served in the RAF. "Was your father from St. Annes?" asked Steve. "Yes", replied Mike and Steve then said his father too came from St. Annes. Steve went on to explain that his father had also served on Catalinas and was also stationed on Sullen Voe.

### **WHAT A COINCIDENCE!**

This prompted Mike to tell the story of his friend's father who was very badly injured in a theatre of operations abroad during WW2 and his life was saved due to the direct intervention of a Royal Navy seaman. As a result of this rescue, the man was repatriated to UK for treatment at a hospital in Brighton where he met and went on to marry one of the nurses who nursed him back to health. After their marriage, she took her new husband to meet her family in the North East. He met his new brother-in-law and – wait for this – he was the seaman who had saved his life!

### **INCREDIBLE!**

I think that many of us will have had a few of these 'spooky stories' where almost incredulous coincidences involving ancestors have come to light. How many people would be inspired to trace their ancestry if they knew that maybe such stories are waiting to be discovered in their family?

**Do you have a story to tell?**

**Will you share it?**

**We encourage all our members to share their family stories.**

**Your contribution doesn't have to be long as even short stories such as these are just as worthy of telling and sharing.**

---

**GOV.UK  
MARRIAGE CEREMONIES UPDATED 4 MAY 2021**

(first advised in Notes and News, November 2021)

**Changes from 4 May 2021.**

Marriages will no longer be registered in a paper marriage register. The details of the marriage will be captured on a marriage schedule or marriage document which will be registered on the electronic marriage register at the local register office after the ceremony.

Each party to the marriage will be able to record the details of up to 4 parents on the marriage schedule or marriage document (for example, mothers, fathers or step parents).

Marriage certificates can only be issued by the register office or General Register Office (GRO). Authorised persons, members of the clergy or secretaries for synagogues will not be able to issue marriage certificates after 4 May 2021.

Authorised persons.

One year after a building has been registered for the solemnisation of marriages, the trustees or governing body can appoint an authorised person to attend marriages and sign the marriage schedule without the need for a registrar from the register office to attend.

The appointment is made by 2 trustees or members of the governing body of the registered building completing a certificate of appointment form. The form should be returned to the General Register Office as the appointment has to be



recorded by the Registrar General before the authorised person can commence their duties.

The individual who is to be appointed should be given a guidance letter which should be read before completing the application form.

The General Register Office has produced a guide and a newsletter for authorised persons.

There are also guides for the clergy and secretaries of synagogues.

---

### **PRESTON WINCKLEY FOOTBALL CLUB** Players and Officials c1907-1910



Preston Winckley Football Team were the winners of the Lancashire Amateur Cup, played at Blackpool against the Old Xavarians.

My ancestor Philip Grime, snr is on the middle row, seventh from the left. He was born in 1887, and appears to be in his early 20s. I think that it would have been around 1907-1910.

The Old Xaverians have a football team who continue to play in the Liverpool Premier League. I contacted them by e-mail to ask if they had any records of the game, but I have not received a reply. I also contacted Lancashire Football Association to ask if they had records of cup winners, but again no reply.

Do any of our members and readers have knowledge of the Preston Winckley Football Team? If so, please contact me by e-mail [billgrime@aol.com](mailto:billgrime@aol.com) Thank you.

---

**MY COUSIN  
IONA DO AMARAL EVANS (NEE MACKENZIE)**

27 Nov 1947 – 3 Sep 2021

By Bill Grime

Iona was born in Preston when her mother, Barbara Mackenzie, was living in Garden Walk, Ashton, with Barbara's mother, Annie Allen, and her aunt, Ellen Gregson.

Iona, who married Richard Charles G Evans in Edinburgh in 1984, and worked as a lawyer, died in Edinburgh Royal Infirmary on 3 September 2021 after suffering a stroke. She had a son and two granddaughters.

Annie Allen (nee Grime) was the thirteenth child of sixteen, and the youngest daughter of Peter Grime and Margaret Winn, my great grandparents, so Iona was my second cousin.

Peter Grime, a butcher, cattle dealer and farmer, married off all his daughters to successful men. Annie married Willie Pontifex Allen at St John Preston in 1906. The marriage certificate gives his occupation as Electrical Engineer of

Croydon. After his marriage, he spent his working career in India and Ceylon as a Railway Engineer.

Barbara Allen was born in Calcutta in 1907, while her parents were out in India, and was baptised in the Anglican Cathedral in Calcutta. The family travelled to and from India regularly up to the 1930s when Willie Allen retired to Southsea, Hampshire. During the First World War, while travelling through the Suez Canal, Annie was looking out and saw her youngest brother, Philip Grime, who was serving in Egypt, washing his horse close to the canal. An unbelievable coincidence.

After the death of her father, Willie Allen, Barbara assisted her mother in running a club in Portsmouth. The 1939 register shows a number of retired women of independent means and two serving Army officers living with them. While living in Portsmouth Barbara met her husband, Cecil James Granville Mackenzie, and they married in Dunfermline in 1945. Barbara was 38, and Cecil 56.

Iona told me that, when her mother told her father that she was pregnant, he did not want to know. That is why her mother moved in with her mother and aunt in Garden Walk in Ashton. After her birth her father's attitude changed and he insisted that she be called Iona Do Amaral Mackenzie.

Cecil Mackenzie had been the Captain Engineer on the Royal Yacht, and King George V had awarded him the MVO. He was a keen sportsman, and played Rugby for Scotland as a centre in one international against England at Inverleith in 1921. Scotland lost 18 – 0.

Cecil was born in Rio de Janeiro, the son of Peter Alexander Cameron Mackenzie and Dona Anezia Augusta Do Amaral. His father was working in Brazil for the Singer Sewing Machine Company. King Don Carlos of Portugal made Peter the Viscount of Serra Largo on 14 January 1894, and elevated him to Count on 11 January 1896, 'for services to Portugal', but no one seems to know what those services were.

Peter Mackenzie retired to Tarlogie House in Tain, a town north of Dingwall, Ross-shire. In the picture Cecil Mackenzie is on the left in naval uniform.



Count de Serra Largo and Family, Tarlogie

Peter Alexander Cameron Mackenzie became the Count de Serra Largo. After coming to Tain, he lived in Tarlogie House and both he and his wife took an active part in the life of the Tain area.

They are seen here with their children – Cecil, Percy, Lionel, Raoul, Zsa Zsa, Maimie and Edward.

The family photo album was given to the Tain and District Museum by a grandson of the Count.

## **Newspaper article from the Strathspey and Badenoch Herald, 12 September 2013 -**

Kingussie's 150th railway birthday celebrations on Sunday were graced by a very noble presence. For all the fabulous fancy dress and elegant horse-drawn carriages, the show was stolen by the unheralded appearance of Mrs Iona Evans.

She had travelled from Edinburgh to meet her grandparents, the Count and Countess de Serra Largo who at one time lived and contributed greatly to the town. The couple dedicated the MacKenzie Fountain on July 21, 1911, and some of the celebrations at the weekend were centred there.

"It's lovely to meet you," said Mrs Evans as she shook the hands of the Count and Countess beside the grand MacKenzie Fountain they had donated to the capital of Badenoch over a century ago.

The couple were regally played by Joe Taylor and Lydie Bocquillon, having been delivered to the station by Ruaridh Ormiston in a stately horse-drawn coach. They were gobsmacked to be introduced to their "relative" and were lost in conversation with her for a while after the pair had unveiled a "memorial plaque" made specially for the occasion.

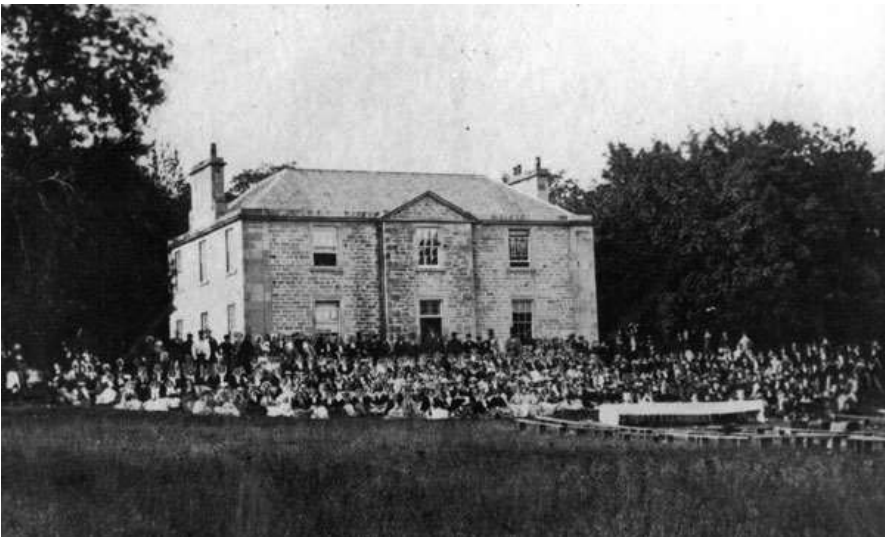
The plaque on the fountain confirmed: "In 1863 the Inverness and Perth Junction Railway was completed through the Grampian Mountains, crossing Druimuachdar Summit at 1,484 feet (452.3m) above sea level, the highest point on a main line in Britain. The railway gave a direct line between the Highlands and the Lowlands of Scotland which encouraged trade and tourism, leading to the growth of towns and villages such as Kingussie."

Hundreds gathered at the station for the unveiling which culminated in a diverse programme of local events over several days to mark the opening of the stretch of the local line with

the new railway stations of Kingussie, Newtonmore, Dalwhinnie and Kinraig on September 9, 1863.

There were also royal visitors on Sunday with Queen Victoria or Gwynneth Wright as she is known locally and her loyal escort John Brown (Rob Ritchie) on hand to greet the public in addition to the Count and Countess de Sierra Largo.

Mr Ian Moffett, chair of the working group who planned the event, said afterwards: "The weekend exceeded all our expectations. We had in excess of 450 visitors on the Sunday alone. Many organisations helped make the celebrations a great success. These included Scotrail and their staff, Network Rail and their staff, Strathspey Railway, Balfour Beatty, our pipers, St Andrews Ambulance, the Silverfjord Hotel, the Duke of Gordon Hotel, the Post Office, Highland Folk Museum, Highland Archive, Brian King, Ian Lamb and all the volunteers who helped on the day."



## **IONA THEN WROTE TO THE NEWSPAPER –**

Sir,

As the Count and Countess de Serra Largo's granddaughter who made the "unheralded appearance" at Kingussie's celebrations of the railway's 150 years (Strathy, September 12 2013), I would like to say how much I enjoyed the proceedings.

My copy of the Strathy is a memento. That your reporter wanted to photograph me alongside the well-dressed "Count and Countess" surprised me at the time. I am very pleased he did.

The Count's eldest son Percy appears on war memorials in Kingussie and Tain. He has no living descendant. My father Cecil was the second son and I am an only child.

The third son, Lionel, died as a result of the Great War and had two sons, Percy (Paul) and Lionel (Donnale). Donnale is well known in Kingussie. I think no others of the children had descendants.

With regard to your article, "Who was the Count?" I doubt that he was a nephew of the Singer president George Ross MacKenzie, although you say he was.

Roddy Maclean, Kingussie's former district council clerk, wrote to your newspaper a letter dated November 25, 1997 which you published in which he maintained that although my grandfather was "enticed" to join the Singer company by George MacKenzie, he was no relation.

Roddy kindly sent me this article some time later once he discovered I existed. Unfortunately we never met.

Not long ago I noticed it being said that Peter Alexander Cameron Mackenzie (the Count) was George's nephew, so I had a short consultation with a genealogist.

She thought it unlikely they were related but couldn't be quite sure. If anyone can shed further light I would be grateful to hear from them.

The article, "Who was the Count" also states that my grandfather retired to "baronial splendour in Kingussie". I have looked into this and it appears that when he and his family returned to the British Isles around 1891 they moved about until he purchased the estate of Tarlogie, Tain in 1896.

In the intervening years the family must have spent a good amount of time in Kingussie because Peter was president of Kingussie Shinty Club from 1891-5.

Three children were in fact born in Kingussie, one in Viewmount, now the Auld Alliance. Before finally settling into Tarlogie in 1989, records show the family sometime residing in Nairn in James Mackenzie's house there, sometime renting a house near Dumfries and sometime, I believe, residing in the south of England.

Once finally settled in Tain the Count continued his strong relationship with Kingussie and was Chieftain of the Shinty Club until his death in 1931.

Iona do Amaral Evans,  
43 House O'Hill Avenue,  
Edinburgh.

---



## WAR MEMORIALS IN DANGER!

By Mike Coyle



**Figure 1 The Colne Co-operative Roll of Honour, now located at Colne Library.**

The recent Heritage Open Days bring to mind buildings and institutions so often taken for granted. Those that we pass regularly without giving a thought. Amongst them the churches and public buildings once bustling with activities, now in retirement or redundancy. Of the gems to be found in them, war memorials. Remembrances of those

in the community who died in service of their country during conflict, many struggling for survival themselves.

As churches close for redevelopment and change of use, the memorials are lost, destroyed, sold, melted down. Unless the community from whom the memorial was created, can recover, rescue and relocate them.

War Memorials, often immediately recognisable, are not generally the problem. War memorials can be any object that commemorates individuals or groups from church communities, schools, workplaces, or families. They can take any form: candlesticks, altar crosses, vases, lecterns, windows, paintings, carvings, to name a few.

Official records at the Imperial War Museum show more than 3500 'Lost' memorials, probably a fraction of the actual number.

For family and social historians, War Memorials provide an insight into a time gone by. Names sometimes in full, sometimes just initials, sometimes with full information, Rank, Decorations, Units they served in, dates of their death or service. We can only imagine the trauma, emotion and economic loss caused to families and communities.



**Figure 2 Model locomotive WW1 Memorial, originally located at Blackpool Comrades Club, now 'Lost'.**

Next time you go into a village or town or public building, seek out the War Memorial and ponder for a moment what it meant to that community or family and what its future might be!

## **DEATHS NOTIFIED**

**Brenda A Rourke** (1630) – Cheshire  
**Stephen Read** (6356) – Kendal, Cumbria  
**Dorothy Frankcom** – Blackburn  
**Helen Mosey** – Llanelli  
**Peter Moore** - Fylde

*Our thoughts and prayers go out to the families of the above.*

# LANCASHIRE FAMILY HISTORY & HERALDRY SOCIETY

[www.lfhhs.org.uk](http://www.lfhhs.org.uk)

(Registered Charity number 513437)

## RENEWAL OF MEMBERSHIP

**Membership renewal** is due on 1 January 2023 and it would be appreciated if you would complete the renewal form and send it with your payment as soon as possible to the Membership Secretary at the address below.

**If you pay by standing order**, you do not need to fill in the renewal form, but please let the Membership Secretary know if you have recently **changed your address, telephone number or email address or wish to donate to Gift Aid**.

**Please consider completing the Gift Aid form if you have not previously done so. Your donation is very important to the Society and enables us to maintain subscriptions at these reasonable levels.**

If you have any queries about your membership, or about Gift Aid, please contact: -

**Sue Foster, Membership Secretary, 18 Glencross Place,  
Blackpool, FY4 5AD**

**email: [membership@lfhhs.org.uk](mailto:membership@lfhhs.org.uk) Tel: 01253 694783**

### **Subscription Rates:**

<b>Ordinary UK</b>	Individual below State retirement age	<b>£14.00</b>
<b>Family UK</b>	All members of the household living at the same address. All may attend meetings. Only one journal is sent to the household address.	<b>£15.00</b>
<b>Pensioner UK</b>	State retirement age or over	<b>£12.00</b>
<b>Student UK</b>	In full-time education	<b>£12.00</b>
<b>Overseas</b>	Membership Choosing Paper Journal	<b>£20.00</b>
	Membership Choosing Electronic Journal	<b>£14.00</b>
	Members In Receipt of a Pension	<b>£12.00</b>

**Overseas members may pay 3 years' subscriptions at once.**

**You can pay by UK£ cheque or online by our secure card system via the Society website [www.lfhhs.org.uk](http://www.lfhhs.org.uk) or by GENfair at [www.genfair.co.uk/supplier.php?sid=127](http://www.genfair.co.uk/supplier.php?sid=127).**

# LANCASHIRE FAMILY HISTORY & HERALDRY SOCIETY

## Membership Application / Renewal Form

Membership No. (if known) .....

Title for address label (Mr/Mrs/Miss/Ms/Mr & Mrs/Other) .....

Surname .....

Forename(s) .....

Address .....

.....

Postcode.....Tel No.....

e-mail address .....

Type of membership: *Tick here*  *Tick here*

Ordinary UK	<input type="checkbox"/>	Pensioner UK	<input type="checkbox"/>
Family UK	<input type="checkbox"/>	Student UK	<input type="checkbox"/>
Overseas	<input type="checkbox"/>		<input type="checkbox"/>

I enclose a **cheque** (payable to LFHHS – Sterling Pounds) for £.....  
To: Membership Secretary, 18 Glencross Place, Blackpool FY4 5AD together with your Gift Aid Declaration form.

**Please note: If you are internet connected, instead of paying by cheque please consider making your payment direct to our bank: RBS, sort Code 16 28 33, Account No. 12578737 or via our secure system via the Society website [www.lfhhs.org.uk](http://www.lfhhs.org.uk), where the membership payment page is shown on the opening page.**

**We mention this in order to defray increasing bank charges and this enables us to have maintained subscriptions at these reasonable levels since 2015. Your continued support and donation are very important to the Society. *THANK YOU***

### **Please Note New Renewal Details**

**Owing to new banking security regulations we regret that we cannot now accept direct credit card details for membership subscription payments.**

For **pdf version** of the journal to my e-mail address  *tick here*

For the **paper version**  *tick here*

**PLEASE CHOOSE ONE VERSION ONLY**

**Lancashire Family History & Heraldry Society**  
*Registered Charity No. 513437*

**GIFT AID DECLARATION**

If you pay UK Income Tax and/or Capital Gains Tax, you can make your subscription worth more to the Society at no cost to yourself. Using Gift Aid means that for every pound you give, we get an extra 25 pence.

In order to Gift Aid your donation please tick this box:

**Please treat all donations/subscriptions I/we have made today, and in the future, or have made in the past four years until I/we notify you otherwise as Gift Aid donations to Lancashire Family History & Heraldry Society.**

**I am a UK taxpayer and understand that if I pay less Income Tax and/or Capital Gains Tax than the amount of Gift Aid claimed on all my donations in that tax year it is my responsibility to pay any difference.**

**I understand the charity will reclaim 25p of tax on every £1 that I give.**

Membership No. (if known) .....

Title ..... Surname .....

Forename/s .....

Full Home Address.....

..... Postcode .....

Signed ..... Date .....

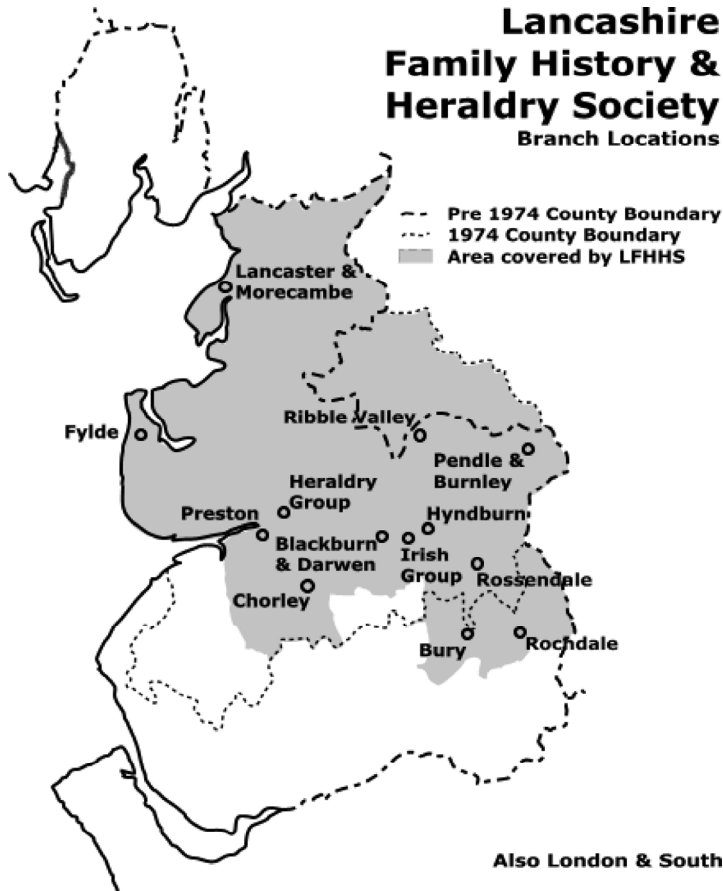
Please notify the Society if you:

- Want to cancel this declaration
- Change your name or home address
- No longer pay sufficient tax on your income and/or capital gains

*Please Note: The membership data are held on computer. The data will only be used for the circulation of Society literature and for membership checking purposes. No data from the computerised records will be disclosed to any other parties by the Society unless required to do so by law.*

# Lancashire Family History & Heraldry Society

Branch Locations



## **An appeal to members**

**Please consider helping the society by completing the Gift Aid section if you are a current UK taxpayer – (See Page 3 of this insert). Your donation is very important to the Society and enables us to maintain our subscription rates at these reasonable levels at a time of increasing costs.**

The Society are looking for volunteers to help with transcribing data for future publication. If you would be interested in helping, please contact the webmaster - [webmaster@lfhhs.org.uk](mailto:webmaster@lfhhs.org.uk)

***Thank you,***

**The Management and Executive committees**

## **Dorothy Frankcom (1933 – 2022)**

Our long standing members may remember Dorothy and her husband Eric who were very active in the Society in the early days.

One of the projects Dorothy carried out was to index the 1851 Census of Lancaster Castle – H. M. Gaol, prior to it going to the microfiche producers.

1986 was a busy year for Dorothy, giving talks to branches on various family history subjects in addition to running Beginners Family History Classes, while Eric was Treasurer to the Federation of Family History Societies. At the LFHHS AGM 1986 Eric stepped down as Publications Officer and Dorothy as Project Fiche Co-ordinator, although they were both still available for branch talks.

At the 1988 AGM Dorothy took over from Joyce Winter as Society Secretary, a post she held until 1991. This was in addition to the Contacts list in the journal advising she was in charge of IGI searches and producing copies, and also back copies of the journal.

In 1995 Dorothy took over the Lancashire Marriage Index 1813 – 1837 from Paula Matthews, until 2003.

All this prior to 'Ancestry' etc without computers! Just imagine how many hours each search took on behalf of our members. Thank you, Dorothy, for all the time and effort you put in to help and assist other members with the same hobby!

Hazel Johnson (Editor)

---

## **Peter Moore**

Members of the Fylde branch have received the sad news that Peter Moore has recently died.

Peter and his wife were members for many years. His wife Jacquie died during Covid, and he was suffering from memory loss and unable to live in the house alone. There was a very small funeral, but his family in Australia were not allowed to attend. There was a hymn played, but no singing allowed.

Daughter Jane and family in Hambleton have arranged a live filming of the service, as the Australian side of the family have decided to come for a longer stay during the Christmas period. This service will be as normal when we can sing and it will feel so much better for all who attend.

Peter kept control of the Fylde branch CDs for many years and was a lovely man who will never be forgotten. He was known to be quite a character. Now re-united with his wife Jacquie.

Olive Thexton, Fylde Branch Secretary

---

## **BOOK REVIEWS ETC**

**Books for review in the journal should be sent to:**  
**Ian White, 23 School Fold, Hesketh Bank, West Lancs PR4 6RE or [ian.white4@live.co.uk](mailto:ian.white4@live.co.uk)**

**Have you had a book published and would like a review in the Society journal? Simply forward a copy to Ian White, address as above.**

**If you have reviewed a book, you have read and think it would interest some of our members, you may simply forward the review to**

**Hazel Johnson, [editor@lfhhs.org.uk](mailto:editor@lfhhs.org.uk) or [hazel.johnson2@btopenworld.com](mailto:hazel.johnson2@btopenworld.com) as usual. Thank you.**

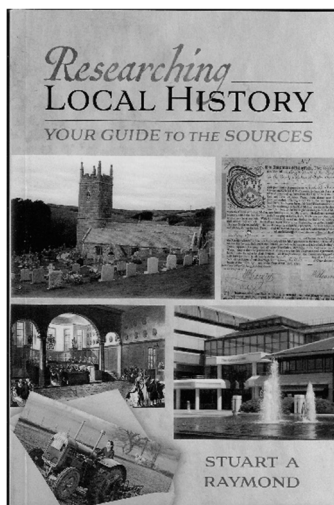
---



# RESEARCHING LOCAL HISTORY GUIDE TO THE SOURCES

By Stuart A Raymond

As long as I have been pursuing my own family history, I have been aware of this most energetic expert author Stuart A Raymond, who, himself, has been researching and publishing for over 50 years, and has just published via Pen & Sword his latest book on the fascinating connections between Local and Family History. How has the place we live in changed, developed, and grown over the years which is the question we historians seek to answer. The answer is to be found in the sources of information that previous generations have left us. The records of parish, county, and diocesan administrations, of the courts, of national government, and of private estates all have something to tell us about the history of the locality we are interested in. So do old newspapers, books and publications, all of these sources are readily available but little used.



Whether you are a family or local historian, interested in the wider background history of your family or place, this book will be of immense use to you providing a comprehensive overview of sources, and its guidance will enable exploration of a vast range posing questions and their answers. A huge range of sources have been digitised for the internet and can be easily read and digested from a comfortable seat in front of a computer, but a much wider range of sources lying on record office shelves remain undigitalised. The aim of this

book therefore is to make historians aware of this alternative resource in record offices and libraries.

How do I use record offices and the internet for local history research? Which records of central government can be used to find information about particular places? How many people lived in your parish? Is it possible to measure the wealth or poverty of the people? What were the conditions like in the average husbandman's house? How did local people earn their living? These simple questions are cleverly answered by Stuart's book, and as I have always found that my family history was infinitely part of a local history project, I can heartily recommend the book as a consummate guide to all of us.

Reviewed by Ian White

---

## **VICTORIAN FASHIONS FOR WOMEN**

**BY FIONA KAY AND NEIL R STOREY**

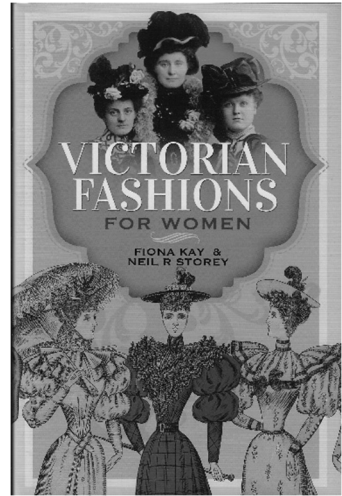
**ISBN 1399004 priced at £20.00**

Pen & Sword have published in hardback a beautifully illustrated and informative book showing the changing styles and fashions for each decade of the long reign of Queen Victoria from the late 1830s to the first years of the 20th century, containing original photographs, adverts and colour fashion plates from a remarkable collection of the authors.

Students and family historians will find interest in researching the family photographs and comparing them for dating purposes.

Superb overviews of the dresses, hats, hair styles, corsetry, undergarments, shoes and boots that combined to present the prevailing styles of each decade.

From those who had money enough to own day and evening wear as well as clothes for sporting and outdoor activities to those with limited income and wardrobes with little more than they were standing up in. The social history context and influences reflected in the clothes of the time laid out clear and in easy-to-follow chronological order, the key features of styles, decoration and accoutrements will be of great interest and help to family historians to date their own family photographs and to anyone with a love of fashion and style to enjoy.



The authors are award winning historians specialising in the social history of Britain, Neil R Storey has written over 45 books and periodicals and Fiona Kay has had a lifelong focus on the fashion industry owning an extensive collection of portrait and family ephemera that also record the history of fashion and society in the 19th and early 20th century and has participated in historical events and exhibitions all over the UK. Both have been regular members of the family photograph interpretation teams of the BBCs *Who do you Think You Are* programmes. My wife loved this book.

Reviewed by Ian White

---

## NOTES AND NEWS

### **SOCIETY HELP DESK AT TARLETON LIBRARY**

Ian White and Jennifer Benson have restarted their regular help sessions at Tarleton Library. Everyone welcome.

**FIRST MONDAY OF EACH MONTH, 10.00 am to 12.00 pm**

---

**FOR MILITARY INTERESTS MEMBERS**

By Mike Coyle

I recently came across a website with rentable (£2.99) videos, to watch online, to assist family historians in researching the Military and those who served.

It's at : [Military History – Family History TV \(family-history.tv\)](http://family-history.tv)

Well worth a look. The site also offers videos on other Family History, Social History and House history topics.

---

**LANCASHIRE ARCHIVES**

**Where are we?**

Lancashire Archives is a short walk from Preston railway station and close to the Park and Ride bus routes.

There is a small pay and display car park, including blue badge spaces behind the building.

**When are we open?**

Tuesday – Friday      9.30am – 5.00pm

We are also open on the second Saturday of each month from 10.00am – 4.00pm.

**How can you get in touch?**

Online:            [www.lancashire.gov.uk/archives](http://www.lancashire.gov.uk/archives)

Email:            [archives@lancashire.gov.uk](mailto:archives@lancashire.gov.uk)

Twitter: @lanchistory

By post: Lancashire Archives,  
Bow Lane,  
Preston  
PR1 2RE

---

## **BRANCH NEWS**

### **BLACKBURN & DARWEN**

Branch e-mail: [blackburn@lfhhs.org.uk](mailto:blackburn@lfhhs.org.uk)

---

### **BURY**

Secretary:

Tel:

Branch e-mail: [bury@lfhhs.org.uk](mailto:bury@lfhhs.org.uk)

---

### **CHORLEY**

Secretary: Steve Williams, 24 The Cedars, Eaves Green,  
Chorley PR7 3RH

And

Bernard Cliffe, 6 Meadow View, Adlington,  
Chorley, Lancashire PR6 9SH

Branch e-mail: [chorley@lfhhs.org.uk](mailto:chorley@lfhhs.org.uk)

---

In August Judith Beeston gave an interesting talk about Edith Rigby, posing as her and telling her life story. She was well educated at Penrose Methodist College but as a woman she had no opportunities to gain employment. Her option was to marry,

and she was looking for someone who would be a good husband and had enough money, a house and was nice looking and intelligent.

She liked to ride her bicycle out to the countryside and enjoyed this but the man she found had a chauffeur driven car and was called Charles Rigby who was 15 years her senior.

After their marriage when he tried to control her behaviour, she disappeared for 2 weeks. He found her in London working as a domestic in a posh house. He gave her liberty to live as she wished. In the 1920s they moved from Preston to Llandudno as her doctor husband was semi-retired. He returned to Preston and got pneumonia and died before she could get there.

She was a suffragette and went on marches, was beaten and abused. Many were imprisoned. When the police came for her, she had gone to Ireland for 3 months.

Her activism included planting a bomb in the Liverpool Corn Exchange on 5 July 1913, and although it was later stated in court that 'no great damage had been done by the explosion', Mrs Rigby was found guilty and sentenced to nine months imprisonment with hard labour.

In later life she remained in Wales and gardened and caring for bees, fell walking and bathing in the sea. She died in 1950.

14 September 2022 meeting – Andy Alston on Edwin Crew. Jane Preston born in Chorley married Edwin Crew born in Spitalfields, Middlesex. In the Charles Booth map of 1889-90 the blue areas in Spitalfields are described as very poor, casual, chronic want. His father, Thomas Crew, was a dyer in the Silk industry and commuted between Macclesfield and London. There were 9 children. In the 1871 census the family are in Middleton, north of Manchester and the father is a Silk finisher.

In the 1881 census Edwin is in St George's Street in Chorley

and described as a printer, letterpress and stationer. It also says proprietor and editor of paper. His paper was called the Chorley Weasel, a humorous publication first published in 1881. He was also a member of a Friendly Society called the Loyal Order of Ancient Shepherds. The society was designed to help each other if out of work or disabled or at death. It was a sort of insurance company and the Shepherds are now an insurance company.

With his newspaper voice Edwin campaigned for good causes such as keeping the Level Crossing to 'Nab' Hill. The Shepherd's Hall in Chorley was quite substantial.

By 1891 he is living in Leicester and by 1901 is Newspaper Manager for the Midland Free Press, a liberal newspaper, and his son Tom is a Chartered Accountant. It appears to be around this time that Edwin used his position in society to campaign on behalf of the blind, supported by Jane. In 1889 he and Charles Harris formed the Wycliffe Society for Helping the Blind. In 1892, he organised the first "blind holiday", a day-long visit to Bradgate Park, Leicestershire. In the following years the Society built a hospital, cottage homes and a home of rest in North Evington, having a vision of "a city for the blind" there. Edwin and Jane spent a lot of their time raising money for their cause.

In 1916 he was elected Chief Shepherd and used the post to promote the welfare of the blind at the many meetings around the country. In 1926 he actually wrote a history of the Order. He also published a book of poems. He died in 1939 but his son Edwin, who had become a Bank Manager in Blackpool for the Westminster Bank, is shown in the 1939 register as retired and living with a number of blind house guests, carrying on his father's legacy.

Submitted by Gwen Pratt

---

## **FYLDE**

Secretary: Mrs. Olive Thexton, 7 Bispham Lodge, 251  
Norbreck Road, Thornton Cleveleys FY5 1PE  
Branch e-mail: fylde@lfhhs.org.uk

During the summer months we held a series of "How to research your family history". Attendance has not been good with people having various reasons for not attending, but we had a number of visitors and these are always welcome. Good to know that some of them will join in January. We were able to help each other with various family history queries, where to search etc. It was also interesting to hear other family stories and new discoveries and specially to help the visitors.

Finding people in 1921 has proved to be a bonus and now it is less expensive, maybe a few more searches will answer some questions.

A friend brought me a newspaper cutting which showed a Carnival procession which was held in 1910, my thought was that a lot of the men in the picture will have gone to serve their country 4 years later and not returned.

I found it interesting to see what people were wearing; some Lancashire ladies with a shawl and apron, some men with tail coats and top hats and ladies in their finery with parasols. Some girls were dressed in pretty dresses and bonnets. I do wish that there was some colour in the picture. There was an absence of children and prams and I am still puzzled about this.

In December we will have our annual quiz and Jacobs join supper. We start the New Year with Gordon and Anne Sharp coming to tell us all about the local countryside just a short distance from the seaside.

In February Dr Colin Penny will visit and keep us interested in the history of Lancaster Castle, his knowledge of the Castle is



outstanding. One not to miss! Please try to come along to this special meeting.

We always welcome visitors from other branches so please come along, bring a friend and/or a relative to listen to our speakers.

Each year I say the same thing, "Where has this year gone?" It amazes me how time flies, unfortunately each year brings another birthday and so older we get. Wiser too, maybe! The next journal will be produced in 2023, just around the corner.

I hope that we will be able to encourage other people to join branches, via the Society, and point out the advantages of becoming a member.

Take a look at our facebook page and website, we also now have a twitter account "Fylde History". It was decided to give it a smaller heading, there is further information attached and links to the Society website etc. You are welcome to follow us!

---

### **HERALDRY GROUP**

Contact Stephen Benson

Now that 2 Straits, Oswaldtwistle is open again we are trying to relaunch the group. No programme has been arranged, but notices will appear on the members forum and the Society website. If you are interested in joining us, please let me know.

---

### **HYNDBURN**

(covering Accrington, Altham, Church, Clayton le Moors, Gt Harwood, Oswaldtwistle & Rishton)

Secretary: Eileen Bullock, 51 Hawthorn Avenue,  
Oswaldtwistle,

Accrington. Lancs BB5 3AE

Branch e-mail: Hyndburn@lfhhs.org.uk

Since we restarted face to face meetings we have tried several different approaches.

Afternoons have not been successful in spite of being a popular request at the AGM – partly due to parking problems, so this has been abandoned.

The Rishton venue has excellent premises with plenty of close parking but it has required most of us to travel there by car. This has caused many problems and has just not been feasible.

Our meeting last month about the Witch Trials was excellent and well attended by people living nearby. However, while there was great interest in the talk itself it was clear that there was very little enthusiasm for doing family history.

**The decision was therefore made to return for the time being to the Straits for our meetings and hope that our small group of regular attendees will grow in the coming months.**

So far we have enjoyed talks on the Railways, Middle Ages, restoring photographs as well as the Witch Trials and we will be having a talk from our local Royal British Legion in November.

Our usual Jacob's join will be held at the December meeting and hope that many of you will come and join us that evening.

On behalf of the Branch and Committee may I wish you all a Merry Christmas and New Year and hope that at last we can look forward to a happy and healthy future.

---

## **IRISH ANCESTRY GROUP**

Branch e-mail: [irish@lfhhs.org.uk](mailto:irish@lfhhs.org.uk)

For the October meeting the Irish Ancestry Group held its first Zoom meeting.

Our speaker was Natalie Bodie from Northern Ireland and the title of the talk was My Ancestors were Irish or were they?

Natalie gave us tips on how to identify where your ancestors may have come from within Ireland

The talk was very well received by the members who joined us.

---

## **LANCASTER & MORECAMBE**

Morecambe Heritage Centre, Unit 29 Arndale Centre,  
Morecambe LA4 5DH

Branch e-mail: [lancaster@lfhhs.org.uk](mailto:lancaster@lfhhs.org.uk)

Tel: 07462 148067

There are no changes to advise.

We are presently struggling with only a few members attending the meetings. Probably due to the time of year or the weather.

We are hoping to have a Christmas themed day on 16 December. Please come along and join us.

---

## **LONDON & SOUTH**

Branch e-mail: [london2@lfhhs.org.uk](mailto:london2@lfhhs.org.uk)

Saint Stephen's Church Hall,

48 Emperors Gate,

Kensington, London SW7 4HJ

**Joint Cumbria/Lancashire/Cheshire/London & South**

On 25 June Dr Colin Chapman gave his talk 'Sin, Sex and Probate, The Ecclesiastical Church Courts'. The Civil Courts dealt with crime, while the Church Courts dealt with sin, or cases against God and Religion. The records which they left behind show an interesting aspect of our ancestors' lives. The Church Courts judged whether people were following the law or amending it to suit themselves.

The Church Courts began in the 7th century. During the reformation in the 16th century there was virtually no change in the structure of the courts. They closed during the civil war but were restored, and then continued almost unchanged until the mid-19th century, when most Church Courts were abolished. Between 1300 and 1800 about 9 million cases were heard, concerning around 10% of the population. Many of us will have ancestors who are mentioned in the records, not necessarily due to them acting unlawfully: they may also have been witnesses, or because they were following canon law, such as being confirmed.

The lowest court in the hierarchy was the Archdeacon's Court which heard anything happening within a parish. Appeals from this court were heard in the Bishop's Court. There were three Archbishop's Courts; the provincial courts of Canterbury, York and Armagh, Ireland. Cases of heresy were only heard in this court. The next court was the Appellate Court, although York, which covered the north, became known as a Chancery Court. The highest court was the Papal Court, or Royal Court after the reformation. Anyone over the age of 26 who was competent in Civil (Roman) Laws and Canon Law could be a judge. The list of cases they could hear would have included swearing, witchcraft, hitting a clergyman or fighting a parishioner in consecrated land, defaming a neighbour, perjury and all probate matters. They would have also heard cases of the recovery of tithes, or if a clergyman had not worn the correct vestments for a wedding. Any changes to the church, its possessions or churchyard will still be heard in an ecclesiastical court today. Surgeons, curates and schoolmasters all required licences, which were issued by the courts. A midwife had

authority to baptise a child and therefore required a licence. In the 17th Century these cost 2s 6d. Licences to marry were issued by a Church Court.

The Borthwick Institute, which is part of the University of York, is also the diocesan record office. It holds wills and other ecclesiastical records. Some records for London are held at the London Metropolitan Archive. Some records are kept in the County Record Offices, at The National Archives or even in the Cathedral Archives. They are not all on-line and may not be indexed. When looking at probate there are more records to look at than just a will.

The talks on Zoom have been successful and I have enjoyed meeting members around the world, but I am aware that many members do not or cannot join a Zoom talk. We will continue with virtual talks for at least the next few meetings, as there is still some uncertainty and I know many people who still do not want to go into large meetings.

I will shortly be arranging talks for 2023. Is there a talk or a speaker which you would like to hear which would be of interest to the NW Groups? Would you like to give a presentation? I would like help in organising the talks. If you could help or have any suggestions, please contact me on the above e-mail address.

Submitted by Helen Conchar – Member 7279  
E-mail: london@cumbriafhs.com or london2@lfhhs.org.uk

---

**\*\*PENDLE & BURNLEY\*\***

Branch website: [www.lfhhs-pendleandburnley.org.uk](http://www.lfhhs-pendleandburnley.org.uk)

Branch members will be aware of the difficulties facing the Branch and the sterling efforts of the Branch Committee to maintain services to its members. Earlier this year, the

Committee decided that whilst they had managed for many years, now was the time to step down. All their best efforts to recruit new Committee members have been in vain.

The Society Management Team decided to arrange a meeting on behalf of the Branch' this was held on 29 September at Barley Village Hall. After a talk by Professor Philip Batman, discussion highlighted the following key issues.

There was mixed and late awareness about the Barley meeting which perhaps explained the low attendance. Not everyone is a member of the Society's Forum and many do not use Facebook. The Management Team will consider ways to improve communications to members. Please note there is still an informative website about the Branch at  
[www.lfhhs-pendleandburnley.org.uk](http://www.lfhhs-pendleandburnley.org.uk)

Most Pendle and Burnley Branch members who used to attend their Branch meetings were and are from the Colne area. It was acknowledged that the age of the Branch members is a factor in dwindling numbers and that the Branch needs to attract new younger members. As it is much easier to travel into the centre of Colne, a meeting venue such as the Birtwistle Centre might encourage attendance. This is also an opportunity for a fresh start for the Branch with a new name: Colne Branch was suggested.

If we can attract younger members perhaps some will be prepared to act as Committee members. But if not, then the Management Team and Branch members need to consider whether the Branch can be managed on more informal lines. Or should we just close the Pendle and Burnley Branch altogether and encourage members to join in our Zoom talks?

There was an acknowledgement that many members go to Branch meetings for the social aspect, not just the Talks. However, members also expressed concerns that there is a need for more Family History - based talks and that the Society in general has lost its way in terms of passing on Family History

expertise. Offering our expertise in local libraries on a regular basis may be one option to address this.

Sadly, there was also the recognition that it might be already too late to save the branch. Operating in the same or similar way to the Cumbria Family History Society, which holds Zoom talks and meets quarterly for one-day and weekend face to face conferences, should be considered as an option.

The Management Team want to thank the Pendle and Burnley Branch Committee for many, many years of dedicated service. We would also be most grateful for any additional comments on the survival, or otherwise of 'The Pendle and Burnley Branch' from the many Pendle and Burnley Branch members who were unable to attend the Barley meeting. Indeed, comments from any members will also be welcome. Your comments will also inform our discussions on the Future Direction of the Society.

Please email [Secretary@LFHHS.org.uk](mailto:Secretary@LFHHS.org.uk)

Submitted by Mike Coyle

---

### **PRESTON**

Secretary: Stephen Benson, 32 Slater Lane, Leyland. Lancs  
PR25 1TN Tel: 01772 422808  
Branch e-mail: [preston@lfhhs.org.uk](mailto:preston@lfhhs.org.uk)

We have enjoyed interesting talks from Peter Park – 'The Lancashire Quota Men' and Alan Crosby talking inimitably about his ancestor Edith Crosby's emigration to America, in September and October preceded by a useful, reasonably well attended Members Evening in August.

The darker nights will not detract some members from facing the journey to our meeting place, but we are encouraged that our attendances in 2022 have revived following the appointment of fresh officers in January.

Joan Clayton has been busy setting up a series of speakers for 2023 giving impetus to our group meetings. Thank you Joan for your hard work on our behalf.

Submitted by Ian White

---

### **ROCHDALE**

Secretary: Mrs. Rosemary Fitton, 13 Bowlers Walk, Rochdale.  
Lancs OL12 6EN  
Tel: 01706 – 356135  
Branch e-mail: rochdale@lfhhs.org.uk

We hope members found the branch Research evening useful in June.

Unfortunately, I was unable to attend our out visit in July;

Lynne reported from the evening:

*I felt like Harry Potter looking for platform 7.3/4 but it was, in fact, Platform 2 at Littleborough Railway Station where Littleborough History Society had their base. Bernard explained how they had come to be given use of the building and how they had renovated it to become the heritage centre.*

*They had managed to acquire quite a few memorial plaques of soldiers who had died in WW1 and these were prominently displayed on their walls. He also pointed out various artefacts which had been given by members of the public. A display cabinet showed various items of pottery which had belonged to various churches, now no longer standing. We were able to examine various items from the cotton mills including shuttles and cones. Several trophies and cups were also on display and Bernard told us where they were from. The evening was a pleasant insight into the work of the group and how much still there was left to do. Thank you to Bernard for such an interesting evening.*



*For anyone interested, Littleborough History Society hold their meetings on the second Thursday of each month and have a wonderful website which tells all about the Littleborough area. This is <https://www.littleboroughshistory.org/> Guests are welcome, doors open at 7.30pm*

In August we welcomed our good friend Sylvia Walch as speaker for the evening. She gave us two superb short films she had put together, the first giving the history of Queens Park in Heywood which included some fabulous pictures of the park in its early years. The second film was the fascinating history of 'Our Local Water – Ashworth and Greenbooth Reservoirs'; showing their construction and the impact the building of these had on everyday life and the local landscape. Thank you to Sylvia for another enjoyable evening.

We will be holding our annual Christmas party at our November meeting (30th) again this year. There will be no meeting in December; meetings will resume in the new year on 25th January when we welcome speaker Andrew Hardwick with his talk on Charles Hardwicke. Please come along if you can.

On behalf of the committee, I would like to wish everyone a peaceful, healthy and happy Christmas and New Year.

---

### **ROSSENDALE**

Branch e-mail: [rossendale@lfhhs.org.uk](mailto:rossendale@lfhhs.org.uk)

---

**PLEASE NOTE: THE DEADLINE FOR NEWS FOR THE  
FEBRUARY 2023 MAGAZINE IS : 30 NOVEMBER  
2022 THANK YOU**

---

## MEMBERS' INTERESTS

### Abbreviations:

c.Bury = Bury area  
 e.20C = early 20th century  
 m.18C = mid 18th century  
 c.1650 = about 1650  
 e.1763 = earliest ancestral link  
 l.19C = late 19th century

N.B. The 19th Century ran from 1801 to 1900. Unless otherwise specified, all locality names are in the pre- 1974 County of Lancashire. All other references are to pre- 1974 Counties.

---

**Joe Winkley** (5052) E-mail: joe.winkley@hotmail.co.uk  
 CRAVEN                      LAN      c.Billington                      1800+  
 HART                              USA      Cincinnati, Ohio                      c.1870

---

**Miss R V Griffiths** (7184) 5 Trentham Lawns, Salford,  
 Manchester M6 6QN Tel: 07715679417  
 E-mail: rhons71@outlook.com  
 COX                              LAN      Greengate  
    IRL      Labourer/Joiner                      1866

---

**Mr N S Ormerod** (7615) 18 Bladen Close, Cheadle Hulme,  
 Cheadle, Cheshire SK8 5RU Tel: 0161 486 1337  
 E-mail: nevormerod@gmail.com  
 CROSSLEY                      LAN      Rochdale                      1700-1850  
 WORMALD                      LAN      Rochdale                      1700-1850

---

**Lee Ashcraft** (10504) 1003 Oakhill Avenue, Unit 173  
Attleboro, MA 02703 United States Tel: 5086990931  
E-mail: leeash@comcast.net

RUDD	LAN	Didsbury	1800-2000
------	-----	----------	-----------

---

**Mrs M Pate** (10722) E-mail: maggie.pate@btinternet.com

BROWN	LAN	Bury	1838-1914
FRENCH	LAN	Bury	1876-1949
FRENCH	SFK	Horham	1856-1880
HOLT	LAN	Bury	1829-1871
MINNS	NFK	Ditchingham	1854+
PATE	LAN	Edenfield	1896-1960
PATE	LAN	Shuttleworth	1884-1916
STARKIE	LAN	Ramsbottom	1900-1981
STARKIE	LAN	Bury	1833-1933
WHITTAKER	LAN	Shuttleworth	1831-1898

---

**Ms Marilyn Moses** (11214) 133 Long Pond Road, Danville  
NH, 3819 USA Tel: 16033825284

E-mail: esmjmoses@comcast.net

CLAYTON	LAN	Bolton	1820
DOBSON	LAN	Bury	1800
ROBERTS	LAN	Bury - Cotton spinner	1855
TAYLOR	LAN	Newchurch	1845

---

**Mr D Bovington** (11262) 4 Park Drive, Wistaston, Crewe.  
Cheshire CW2 8EW Tel: 01270 567409

E-mail: David.bovington@btopenworld.com

HOWORTH	LAN	Rossendale	
HAWORTH	LAN	Rossendale	

---

**Mr S Ennis** (11271) 49 Rowney Road, Dagenham. Essex  
RM9 4PP Tel: 2085928361

E-mail: stephenennis102@btinternet.com

DAY	LAN	Fylde – school mistress	1800-1900
ENNIS			1800-1900
KELLY	LAN	Liverpool – cotton	1800-1900
PENNANT	LAN	Liverpool - merchants	1800-1900
PENNANT	LAN	Burnley	1800-1900
TAYLOR	LAN	Liverpool	1750-1900

---

**Ms P A Wright** (11282) E-mail: triciawright90@aol.co.uk

ALLCOCK	LAN	Cheetham	1770-1870
CRAGG	LAN	Wyresdale	1700+
FORREST	NTH	Northampton	1790+
FORREST	LAN	Lancaster	1790+
HAWORTH			1900
HOWART(H)	LAN	Lancaster	1750-1780
ROPER	CHS		1760-1830

---

**Mr W Stafford** (11294) E-mail: walter410@btinternet.com

ARNFIELD	DBY	Mellor	c1755
ARNFIELD	DBY	New Mills	c1755
BAGSHAW	DBY	Chapel-en-le-Frith	c1300
BENNETT	DBY	Mellor	1678
BREED	BDF	Sundon	c1724
BREED	BDF	Biggleswade	c1724
COKAYNE	DBY	Ashbourne	c1479
DAVIS	BDF	Sundon	c1728
DAVIS	BDF	Biggleswade	c1728
DE NEVILLE	DUR	Raby Staindrop	c1200
DE PERCY	NBL	Alnwick	c1230
GASCOIGNE	YKS	Gawthorpe; Harewood	c1383
HAMMERTON	LAN	Slaidburn	c1334
HAMMERTON	YKS	Hellifield	c1334
HAMPSON	LAN	Ashton-under-Lyne	c1780
HEATON	LAN	Deane-by-Bolton	c1550
HIGGINBOTHAM	CHS	Prestbury	1706
JOBSON	YKS	Cudworth	c1545
MIDDLETON	YKS	Stockeld; Ilkley	c1400
NICHOLS	YKS	Thornhill	c1800

PALMER	HRT	Shenley	1770
PALMER	HRT	London Colney	1770
PATES	BDF	Luton	15C
ROWBOTTOM	DBY	Stirrop	c1500
SHRIELEY	CHS	Bollington	c1500
SIMISTER	LAN	Salford	c1778
STAFFORD	DBY	Mellor	c1344
STAFFORD	DBY	Bothoms Hall	c1344
STANSFIELD	LAN	Ashton-under-Lyne	c1666
SWINDELLS	CHS	Stockport	c1734
SWINDELLS	CHS	Macclesfield	c1734
TEMPEST	YKS	Bracewell	c1334
WYTHAM	YKS	Ledston	c1450
WYTHAM	YKS	West Bretton	c1450

---

**Mr A Dunicliff** (11298) 109 Ribchester Road, Salesbury,  
Clayton-le-Dale BB1 9HQ Tel: 01254 249139

E-mail: Alan.dunicliff@btopenworld.com

CHESTERTON	LAN	Blackburn	pre 1900
DEWHURST	LAN	Blackburn	18C-19C
DUNNICLIFF	WES		pre 1900
MASHITER	LAN	Brindle	18C-19C
OUGHTON	NFK	Walpole	16C+

---

**Mr B Barton**(11299) E-mail: bruce@barton.net.nz

BARTON	LAN		1850
GREENWOOD	LAN	Bacup	1850s

---

**Mr K Eccles** (11305) 45 Greenwood Road, Standish, Wigan  
WN6 0NL Tel: 07450 628031

E-mail: kevmeister1989@gmail.com

ECCLES	LAN	Mawdesley; Bispham Green-labourer	1822
--------	-----	--------------------------------------	------

---

**Ms C Hall** (11310) 4 Aller Mead Way, Williton, Taunton,  
Somerset TA4 4RE

FLINT	LAN		17C-18C
HEYES	LAN	Blackburn (Pawnbroker)	18C-19C
RAILTON	LAN	Blackburn (Mill worker)	18C-19C

---

**Ms D Turnbull** (11311) E-mail: Debbie.djt@btinternet.com

BARON	LAN	Blackburn (Builder)	1767-1919
BARON	LAN	Tockholes (Yeoman)	1620-1774

---

**Mr H Ross** (11316) E-mail: thelinuxalliance@gmail.com

SIDEBOTTOM	LAN	(Wool Mill)	1700-1800
------------	-----	-------------	-----------

---

**\*\* IMPORTANT \*\***

**Are your membership details up to date?**

**Have you changed your email address?**

**Please let us know any change of email address or  
any other personal contact details :**

**Sue Foster, Membership Secretary**

**Email: [membership@lfhhs.org.uk](mailto:membership@lfhhs.org.uk)**

**Text: 07963 132979**

**Address: 18 Glencross Place, Blackpool FY4 5AD  
Telephone: 01253 694783 (leave a message and  
phone number, please)**

---

**THE LANCASHIRE FAMILY HISTORY AND HERALDRY SOCIETY  
CONTACTS**

- Chairman:** **Sheila COURT**, Flat 3, 51 West End Road, Morecambe LA4 4DR  
Tel: 01524 411439 [chairman@lfhhs.org.uk](mailto:chairman@lfhhs.org.uk)
- Treasurer:** **Ian White**, 23 School Fold, Hesketh Bank, West Lancs PR4 6RE  
Tel: 01772 816841 [treasurer@lfhhs.org.uk](mailto:treasurer@lfhhs.org.uk)
- Membership Secretary – for Subscriptions and Renewals:**  
**Sue FOSTER**, 18 Glencross Place, BLACKPOOL FY4 5AD  
Tel: 01253 694783 [membership@lfhhs.org.uk](mailto:membership@lfhhs.org.uk)
- Society Secretary – Jayne Dixon** [secretary@lfhhs.org.uk](mailto:secretary@lfhhs.org.uk)
- Editor – for Articles, Notes & News and items for the Journal:**  
**Hazel JOHNSON**, 65 Lever House Lane, LEYLAND PR25 4XN  
Tel: 01772 513618 [hazel.johnson2@btpenworld.com](mailto:hazel.johnson2@btpenworld.com)  
Or [editor@lfhhs.org.uk](mailto:editor@lfhhs.org.uk)
- Pedigree Database** **David BRETHERTON**, 33 Towersey Drive, THAME OX9 3NR  
Tel: 01844 215178 [pedigrees@lfhhs.org.uk](mailto:pedigrees@lfhhs.org.uk)
- Surname Interests** **Jennifer BENSON**, 32 Slater Lane, LEYLAND PR25 1TN  
Tel: 01772 422808 [surnames@lfhhs.org.uk](mailto:surnames@lfhhs.org.uk)
- Helping Hands & Mentoring** **Fiona HALL**, 6 Willowherb Close, Prestbury, CHELTENHAM GL52 5LP  
[help@lfhhs.org.uk](mailto:help@lfhhs.org.uk)
- Projects:** **Tony FOSTER**, 142 Cotswold Crescent, BURY BL8 1QP  
[projects@lfhhs.org.uk](mailto:projects@lfhhs.org.uk)
- Sales:** Sales Officer, 2 Straits, Oswaldtwistle, ACCRINGTON BB5 3LU  
[sales@lfhhs.co.uk](mailto:sales@lfhhs.co.uk)
- Heraldry:** [heraldry@lfhhs.org.uk](mailto:heraldry@lfhhs.org.uk)
- Education Liaison:** **Mike COYLE**, 248 Hawes Side Lane, BLACKPOOL FY4 5AH  
Tel: 01253 761778 [education@lfhhs.org.uk](mailto:education@lfhhs.org.uk)
- Webmaster:** **Stephen BENSON**, 32 Slater Lane, LEYLAND PR25 1TN  
Tel: 01772 422808 [webmaster@lfhhs.org.uk](mailto:webmaster@lfhhs.org.uk)
- Research Centre:** 2 Straits, Oswaldtwistle, ACCRINGTON BB5 3LU  
Tel: 01254 239919 (Answerphone)  
For opening times see [www.lfhhs.org.uk](http://www.lfhhs.org.uk)

**PLEASE NOTE:**

It is regretted that requests for searches of ALL ONE SURNAME cannot be undertaken. Where a reply is required please enclose a stamped addressed envelope (or 3 IRC coupons). Changes of address and non-receipt of journals should be reported to **Membership Secretary**, 18 Glencross Place, Blackpool FY4 5AD. If you are aware of the death of any member kindly advise **Sue Foster** who will ensure that future magazines are not sent out. Thank you.



If undelivered please return to:  
Membership Secretary, Sue Foster, 18 Glencross Place, Blackpool FY4 5AD

ISSN 0306 1280