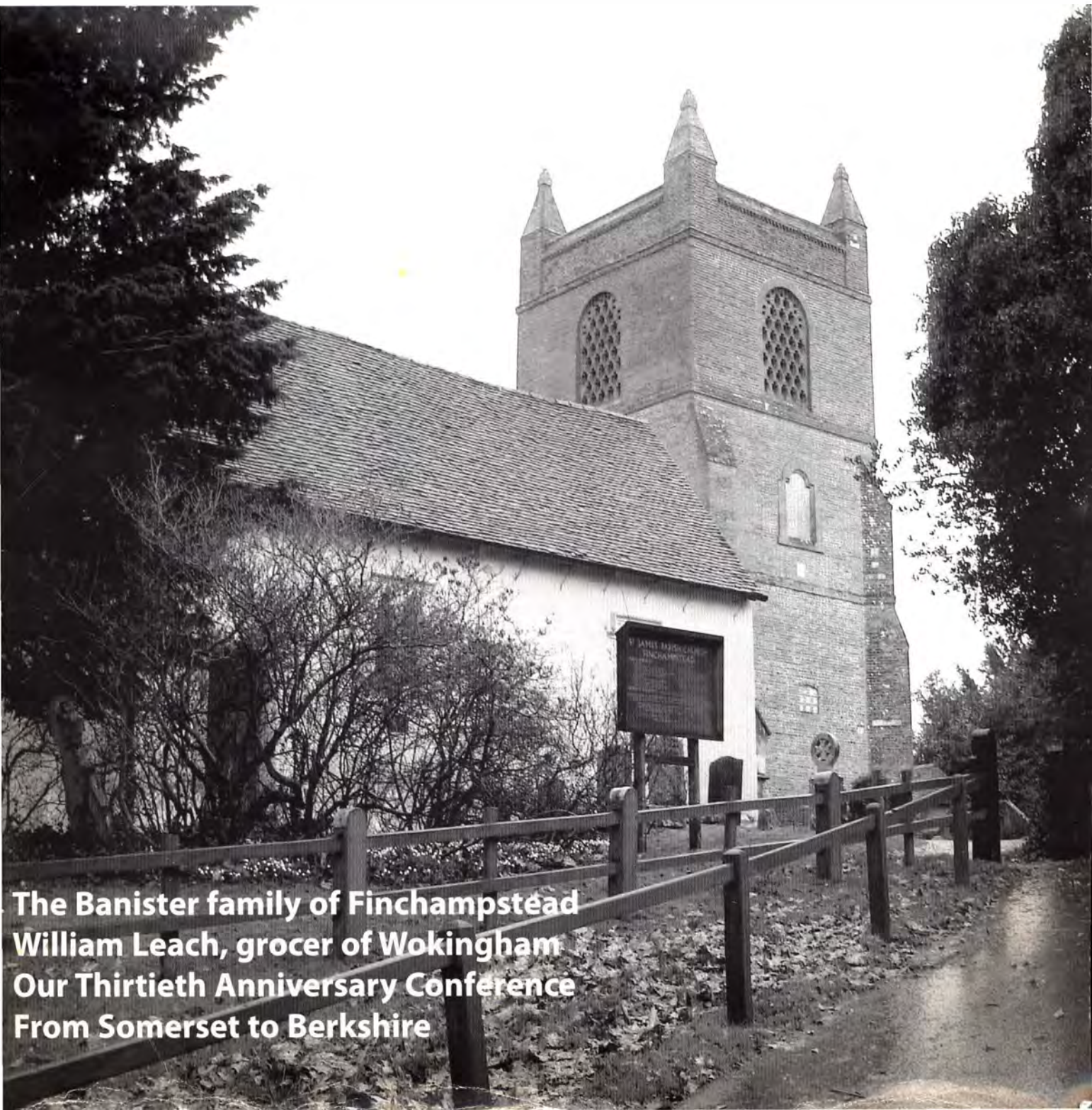




# Berkshire Family Historian

December 2005 & March 2006• volume 29

*For Family Historians in the Royal County of Berkshire*



**The Banister family of Finchampstead  
William Leach, grocer of Wokingham  
Our Thirtieth Anniversary Conference  
From Somerset to Berkshire**

### **Chairman**

Nigel Saltmarsh  
Les Salines  
Reading Road  
Burghfield Common  
Reading  
RG7 3BT  
email: <chairman@berksfhs.org.uk>

### **Secretary**

Tom James  
251 Wootton Road  
Abingdon  
OX14 1LJ  
email: <secretary@berksfhs.org.uk>

### **Treasurer**

Ann Rutt  
39 Oak Tree Road  
Thatcham  
Berkshire RG19 4QP  
email: <treasurer@berksfhs.org.uk>

### **Editor for future magazines**

Penny Stokes  
The Holding, Hamstead Marshall  
Newbury  
Berkshire RG20 0HW  
email: <editor@berksfhs.org.uk>

### **Membership Secretary**

Bob Plumridge  
email: <memsec@berksfhs.org.uk>

### **Email discussion group**

Joan Vinall  
<joindiscussion@berksfhs.org.uk>

### **Projects Co-ordinator**

Susan Cummings  
49 Darby Green Lane  
Blackwater  
Camberley  
GU17 0DN  
email: <projects@berksfhs.org.uk>

### **Members' Interests**

email: <members-interests@berksfhs.org.uk>

The illustration on the front cover is a photograph of the Parish Church of St James, Finchampstead.

Publishers: Berkshire Family History Society. Printers: Richfield Graphics Ltd, Richfield House, Unit 48 Paddock Road, Caversham, Reading RG4 5BY

Registered Charity No. 283010.

In the event of non-delivery please return to Chad Hanna, 161 St Peters Road, Earley, Reading RG6 1PG

© 2006. All articles in this magazine are copyright to the Society and to their contributors, unless otherwise stated, and may not be reproduced, stored in a retrieval system, or transmitted by any means without the prior permission in writing of the Berkshire Family History Society.

The opinions expressed in this magazine are those of the authors and do not necessarily reflect the opinions of the Editor or the Society. The inclusion of advertisements in this magazine does not imply any recommendation or otherwise by the Editor or the Society.

ISSN: 1468-1080

**Copy deadline for the June issue is 7th April**

**Website** <www.berksfhs.org.uk>

### **Branch Chairmen**

#### *Bracknell and Wokingham*

Derek Trinder  
58 Knox Green  
Binfield,  
Berkshire RG42 4NZ  
Tel: 01344 457751  
email: <bracknell@berksfhs.org.uk>

#### *Computer*

Peter Francis  
5 Fuchsia Close  
Calcot, Reading  
Berkshire RG31 4RH  
Tel: 0118 901 0282  
email: <computerbranch@berksfhs.org.uk>

#### *Newbury*

Phil Wood  
Walnut Tree Cottage, Oxford Road  
Donnington  
RG14 3AG  
Tel: 01635 46497  
email: <newbury@berksfhs.org.uk>

#### *Reading*

John Price  
The Ramblers, Kennylands Road  
Sonning Common, Reading  
Berkshire RG4 9JP  
Tel: 0118 972 2210  
email: <reading@berksfhs.org.uk>

#### *Vale of White Horse*

Jill Muir  
10 Bellamy Close  
Kingston Bagpuize with Southmoor, Abingdon  
OX13 5AB  
Tel: 01865 820493  
email: <vale@berksfhs.org.uk>

#### *Windsor, Slough and Maidenhead*

Valerie Storie  
15 Anthony Way  
Cippenham, Slough  
Berkshire SL1 5PG  
Tel: 01628 605411  
email: <windsor@berksfhs.org.uk>

### **Other addresses**

#### *BFHS Research Centre*

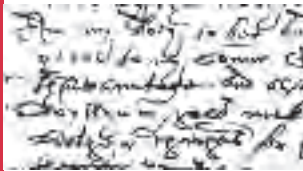
Yeomanry House, 131 Castle Hill,  
Reading  
Berkshire RG1 7TJ  
Tel: 0118 950 9553

#### *Berkshire Record Office*

9 Coley Avenue  
Reading  
Berkshire RG1 6AF  
Tel: 0118 901 5132

# Contents

10



## News

- 02 General
- 08 Notes from our Society Chairman
- 15 Our Thirtieth Anniversary Conference
- 17 Berkshire Burial Index: update for November 2005

15



## Features

- 10 The Banister Family of Finchampstead
- 21 Will of William Leach, grocer of Wokingham 1762
- 24 From Somerset to Berkshire
- 25 Dedication of Caversham War Memorial for WW2

21



## Regulars

- 27 Gleanings from exchange magazines
- 28 Write now
- 30 Members' interests
- 34 Back pages

**Inside back cover** Branch programmes for Bracknell and Wokingham, Computer Branch and Newbury

**Back cover** Branch programmes for Reading, Vale of White Horse and Windsor, Slough and Maidenhead

## Where is the Journal?

I did not realise when I wrote, “There is no guarantee about exactly when the next Historian will appear” in the “Editor wanted” item on page three of the September journal that it would take this long to produce a magazine! Unfortunately personal reasons and my own work for FamilyHistoryOnline meant that I had little time to put together a magazine or even a news letter over Christmas and it’s only now that some time has become available. However it is now time for the March journal so it seems sensible to produce a joint issue. A special thank you to my proof readers who indicated many improvements but who have not seen every single page.

The Executive committee will be asked to consider a suitable alternative to the missed issue.

## Penny Stokes becomes Editor

Over the past few months we have searched far and wide for an editor, or editors and desktop publishers and considered the possibility of contracting someone to edit the magazine for the Society and the likely impact on your subscriptions.

The good news is that we now have an editor — Penelope Stokes — who has published several local history books mainly about West Berkshire. I do hope you will all support her by sending articles, letters and other snippets to her. Please do not send images to her at <editor@berksfhs.org.uk> without her prior knowledge as she is restricted to dial-up Internet access at present.

I sincerely wish her well in her work with the *Berkshire Family Historian*.

## Tom James becomes Society Secretary

The Chairman, Secretary and Treasurer are the three principal officers of the Society, and we have been without a Secretary since the Annual General Meeting in June. We are particularly pleased that Tom James from Abingdon has stepped forward to fill this vacancy.

He brings a wealth of experience to the role from his life in Banking and working with a Trade Union.

Now that Tom’s email connection difficulties have been resolved he can be reached via <secretary@berksfhs.org.uk> and he is often at the Research Centre on Wednesdays.

There are other important vacancies to be filled at the AGM in June, notably the Treasurer.

*Chad Hanna, IT Manager and Web Master*

## Notice of Annual General Meeting

The Society Annual General Meeting, with annual reports from the Chairman and Treasurer, will be held before the Windsor, Slough and Maidenhead branch meeting at 7.15pm on Tuesday 27th June 2006 in the Christ Church United Reformed Church, William Street, Windsor.

If you would like to nominate a member to the Executive please let the Secretary know by 1st May. Please ensure that the individual you nominate is prepared to sit on the Committee and be a Trustee of the Charity. More information about being a trustee of a charity can be found on the Charity Commission web site <www.charity-commission.gov.uk> but certain people are not able to be trustees:

- People under the age of 18;
- Anyone convicted of an offence involving deception or dishonesty unless the conviction is spent;
- Anyone who is an undischarged bankrupt;
- Anyone who has been removed from trusteeship of a charity;
- Anyone who is disqualified from being a Company Director.

Neither Ann Rutt nor Chad Hanna can be nominated for the Committee as both have served five consecutive years.

## Cataloguing at the Berkshire Record Office

Lisa Spurrier reports the culmination of another major cataloguing project in the Berkshire Record Office newsletter, the Echo, namely the extensive archive of Reading Municipal Charities (D/QR). This body incorporates more than 30 charities founded for the people of Reading, variously providing almshouses, food, clothing and fuel for the poor, education (including the Blue Coat School for boys and the Green Girls' School), apprenticeship, and dowries for poor girls. The records of the charity founded in the 1640s by Reading-born William **Laud**, a controversial Archbishop of Canterbury, are among the most interesting, as they include around 300 medieval deeds, most relating to the property in Bray with which he endowed the charity.

Records have also arrived from Stratfield Mortimer (CPC 120) and Sunninghill (CPC 126) Parish Councils, the latter including 20th century records of Sunninghill Burial Ground.

An interesting collection has arrived from a Wallingford solicitor's firm, 1573-1988 (D/EX 1871). It includes deeds for many north Berkshire parishes, papers of the **Cozens** family of Cholsey, and papers relating to other clients, mainly for the late 19th and early 20th centuries. Some of the more unusual of these include an agreement releasing a Streatley hotelier from liability for accidentally shooting in the head the boy who was "boots" at his hotel and agreements between estranged married couples for separation, maintenance or good behaviour.

The papers of the **Alderman** family of Kintbury, 1712-1939 (D/EX 1891) include deeds of property in Kintbury, Speen, and Lancashire. A catalogue has been compiled for the records of an estate mainly in Frilsham, Yattendon, and Hampstead Norreys, which was built up by London-based stockbroker H G F Weber (D/EX 1927). We have also received additional estate and family papers of the **Hippisley** family of Sparsholt, 1808-1965 (D/EX 1332).

A small collection of deeds of property in Caversham, Newbury, Reading and Sonning, 1677-1921, has been listed (D/EX 1919). Also now available are deeds for property in Ashbury (D/EX 1892); Binfield (with prints of Bisham Abbey) (D/EX 1730); Childrey and Lambourn (D/EX 1920); Maidenhead (D/EX 1917); Newbury (D/EX 1878 and 1888); Pangbourne (D/EX 1945); Reading (D/EX 1898 and 1945); Wallingford (D/EX 1935); and Winkfield (D/EX 1895).

A fascinating plan showing the course of the two streams of the River Cole in Bourton in 1771 has been transferred from Wiltshire and Swindon Record Office (D/EX 1939). The plan also shows "ponds" dug out of the river to allow watering places for cattle. A detailed map of Longworth drawn in 1838 has been purchased (D/EZ 146).

## Family History Fairs

After attending the Bracknell Family History Fair on 29th January, the next fair with a Berkshire FHS presence will be the **Society of Genealogists' Family History Show** on 29th April at the Royal Horticultural Hall, Greycourt Street, SW1. Advance tickets are available from the Society of Genealogists. We are collaborating with the Buckinghamshire FHS to ensure a good Thames Valley presence, though our colleagues from Oxfordshire FHS do not usually attend.

Our Society also plans to attend the **Wiltshire Family History Society Open Day** on Saturday 17 June in New College, Swindon followed by other fairs in our neighbouring counties.

We are always glad to meet members at these fairs. Interest in fairs seems to be on the wane and we will be taking a more limited selection of stock with our computer look up service to fairs in the future.

The **Yorkshire Family History Fair** on Saturday 24th June claims to be the largest family history event in the UK. It takes place at the York Racecourse in the Knavesmire Exhibition Centre 10am to 4.30pm. Admission is £3 and there are cafeteria facilities and free parking. The Berkshire FHS does not plan to be at this fair.

## Parish Records deposited

Lisa Spurrier reports that Parish records have come in from

- Bracknell Holy Trinity (D/P 165);
- Burghfield, including the burial reg., 1871-2005 (D/P 29);
- Dry Sandford (D/P 184).
- Easthampstead, including registers of baptisms, 1962-2003, and marriages, 1966-1999 (D/P 49);
- Littlewick (D/P 179);
- Priestwood (D/P 165B);
- Reading Holy Trinity (D/P 171);
- Reading St Mary (D/P 98);
- Remenham (D/P 99);
- Sunninghill, some dating back to 1677 (D/P 126);
- Winnersh (D/P 73C).

The burial register for Compton, 1901-2005 (D/P 41) and East Ilsley registers of burials and banns, 1868-2005 (D/P 74) are now available.

Particularly interesting was the 1930s vicar of Remenham who filled his service register with his comments on national and international affairs, including the Italians' "diabolical" use of poison gas in Ethiopia, and the persecution of Jews in Germany and Austria.

Additional records have also come from Tilehurst (D/MS 76) and Henley-on-Thames (D/MS 104) Methodist Churches, including the latter's register of baptisms, 1874-2002.

The records of Beech Hill Baptist Church, c.1885-2005, have been catalogued (D/N 49). A large collection of photographs and pictorial supplements produced by local newspapers, mainly in the early 20th century, with printed miscellanea relating to local Methodism, provides a useful resource for the history of Reading and the surrounding area (D/EX 1638).

## Death of Marjorie Moore

It was a great shock to learn that Marjorie Moore died recently when the Land Rover, in which she and others were travelling, went over a cliff while out on safari. Her husband, Richard, was in the hotel at the time and will be devastated.

Besides being a good friend to our Society (Richard was a grocer in Newbury) Marjorie was very well-known in the family history world for her lectures based on many aspects of her own research, for her organisational skills in the founding of the Wiltshire FHS, in major contributions to the Society of Genealogists as Chairman and generally, in running, assisted by Richard, the 'Help' table at many family history fairs (most recently at Bracknell), plus various family history conferences over the years, and in so many other ways that we are unaware of. She will be missed by so many people it is hard to imagine life without her.

*Cliff & Jean Debney*

## Dates for your diary

A day school on the **Court of the Quarter Sessions** and its records will be taking place at the Record Office as part of the Oxford University Continuing Education (OUDCE) programme, on **Saturday 18th March 2006**. For more information and to book a place, contact the OUDCE on 01865 270368 or e-mail: [ppdayweek@conted.ox.ac.uk](mailto:ppdayweek@conted.ox.ac.uk).

The next **London Cornish Association Family History Day Conference** will take place on Saturday, 8th April 2006 at Bloomsbury Central Baptist Church, 235 Shaftesbury Avenue, London WC2H 8EP.

Speakers: Garry Tregidga: "How's the Family? Kinship & Society in Cornwall" and Peter Christian: "Finding Genealogy on the Internet". Question and answer sessions.

Further details may be obtained from Booking Secretary: Tel: 020 8989 7336 or email [<brenda@londoncornish.co.uk>](mailto:brenda@londoncornish.co.uk)

Cost £17 (concession for members of affiliated Cornish Associations and Cornwall FHS) includes refreshments, Cornish pasty lunch and Cornish cream tea.

Nearest stations are Tottenham Court Road (Central & Northern lines) and Holborn (Central & Piccadilly lines).

## Nearly born in a barn

A searcher discovered a fascinating account of an attempt by the overseers of Newbury parish to avoid financial responsibility for a vagrant woman's child at the end of the first Enborne parish register (D/P 51/1/1) as follows:

“October ye 27 1724 Jane Jones a Traveller wit[h] ... lodged in the barn of Thomas Smith of Enborne and s[he] happened to be in labour that night.

Thomas Smith hearing of it, came to her and told her, that she should not lie in there, and directed her to the next Ale-House the Bishops-head in the parish of Newbury and gave her a shilling.

John Cooper who lived at the Bishops-head would not entertain her, but forc'd her out of his house and [the] child was born in the court, but after that she and [the] child were taken into his house.

At the end of a fortnight and four days the offic[ers] of New]bury sent the said Jane Jones and her two childr[en] to the] parish of Enborne by a vagrant-pass, it being the [la]st place where the said Jane Jones was relieved.

The officers of Newbury would not suffer the child to be baptized in their parish, and therefore the minister of En[borne] was under a necessity of baptizing the child.

This I have written to testifie, that though the child was baptized at Enborne, it was born in the parish of Newbury October ye 27th 1724 the night before the feast of St Simon and Jude. William Dashwood Rector of Enborne November the 24. 1724.

Anne the daughter of Jane Jones a Traveller was baptized November the 24 1724, but born in the parish of Newbury October ye 27th 1724.”

*Lisa Spurrier*

---

## Parochial Fees from 1st January

Some of us have had cause to search parish registers at the Church where they are kept and sometimes been surprised by the fees that have been asked for, though often a donation is sufficient.

This year the Archbishops' Council have laid down the following fees for searches in registers:

£18 for the first hour (inclusive of one copy of an entry in certain registers);

£15 for each subsequent hour or part of an hour:

£18 for additional copies of entries.

Note that the fee for marriage certificates is fixed by the Registrar General.

## Helping them on their way

The overseers and ratepayers of the north Berkshire parish of Ashbury were so desperate to get rid of one poverty-stricken family that when in 1845 John Powell, his wife, and their seven children, wanted to emigrate to the Cape of Good Hope, they were prepared to sell two cottages the parish owned in order to help fund the journey (D/P 9/8/1). When this proved impossible, money was borrowed instead. The Government provided free transport for the parents and three of the children.

*Lisa Spurrier*

## Interested in World War 2?

Berkshire Record Office has just produced its free 'Guide to World War 2 Records'. It includes documents at the BRO which are relevant to research into the war of 1939-1945.

Records are listed by place under these topics: Air Raid Precautions, Bombing Raids, Home Guard, Civil Defence, Evacuation Scheme, Remembrance, and Home Front.

This guide will be useful for anyone who is interested in how the war was run locally or how it affected organisations and individuals in the county.

*Lindsay McCormack*

## Family History Conferences

### *“Putting Flesh on the Bones”*

The Bedfordshire and Northamptonshire Family History Societies in association with the Federation of Family History Societies have arranged this major conference with two tracks of notable speakers starting Friday afternoon 1st September and finishing at lunchtime on Tuesday 5th September.



More details and a booking form can be found on the Conference web site at <[www.conference2006.org.uk](http://www.conference2006.org.uk)> Some booking forms which include a programme can also be found in the Research Centre.

### *“The Birth place of American Genealogy”*

Although I have been to many of UK conferences and very much enjoyed the opportunity of learning and talking from other family historians, I will be at another International Genealogical Conference that overlaps in time with the above conference! This conference has many tracks including a British track and is taking place in Boston, Massachusetts in the USA hosted by the New England Historic Genealogical Society. More details at <[www.fgs.org](http://www.fgs.org)>

### *“Gone but not forgotten”*

Closer in both time and distance is a one day conference being run by the Gwent FHS at the County Hall in Cwmbran on Saturday 1st April. Only a small investment of £10 is needed and it is within striking distance of Berkshire so no overnight accommodation is required. More details at <<http://www.rootsweb.com/~wlsqfhs/seminar.htm>>

*Chad Hanna*

## Naomi Web site launched

The National Archive of Memorial Inscriptions (NAOMI) web site was launched late in 2005 and can be found at <[www.memorialinscriptions.org.uk](http://www.memorialinscriptions.org.uk)>

The first set of data to go live was some 70,000 inscriptions from 200 burial grounds in Norfolk. There are some 100,000 names listed. A payment is required to view the inscription and a photograph may also be available. Royalties are paid to the provider of the data on a quarterly basis. The maximum charge is £5 if a photograph is available.

## Photos now on Family History Online

<[www.familyhistoryonline.net](http://www.familyhistoryonline.net)> operated by the Federation of Family History Societies claims nearly one million names from memorial inscriptions are available on its web site and some of these include complete inscriptions.

Images are now supported beginning with approximately 400 from the Earley Town Council Burial Ground at Mays Lane. Photos are charged at £2 for gravestones with lower charges for churches and images of documents as they become available.



## Eddie Spackman remembered

Eddie Spackman, the motive force behind the setting up our Society's members-only discussion list and so many other things, passed away on Monday 26th September after nearly a year struggling with a form of lung cancer (mesothelioma).



I believe I first received an email from Eddie back on 31st October 1998 volunteering to set up a computer directory of members' interests. This he set about, merging our 1998 directory published on fiche with those published in the magazine. This led to the directory of members' interests on the society's web site, along with the instructions on how to make use of it – ensuring that members' email addresses were not available to any Tom, Dick or Harry.

Eddie went on to organise and chair the Computer Steering Group and then to launch the Computer Branch at its old venue at Earley St Peters. As Chairman, I appreciated his enormous support and miss both him and his help immensely. It was very typical of him that he managed the hand over of the website and the discussion list in such a professional manner.

I feel very, very sad, that someone who had so much to contribute has been taken away from the world, so soon after his retirement from the Meteorological Office. I am sure you will want to join me and the rest of the Society in sending our condolences to his wife, Gay and the rest of his family at this difficult time.

*Chad Hanna, IT Manager*

## Messages on the Discussion Group

Many members sent messages to the discussion group saying how he quietly gave help to a large number of members. I have lifted two quotes from these messages.

From Australia, "It was Eddie's initiative in circulating a letter of mine in 1999 to the List, that opened doors leading to the discovery of Berkshire/Oxfordshire ancestors reaching back to the early 1500's."

"Although I never had the pleasure of meeting him I have benefited greatly from all the hard work he has put into the BFHS over the years. The discussion list is a wonderful resource and we have all benefited from the ability to share our questions and our knowledge with other members. I've used many other Family History Societies' websites and I think that ours is one of the best there is. There is a huge amount of information on the website."

## Hospice Donations

Many people have asked about donations. Cheques payable to 'Duchess of Kent House Trust' can be sent to Fundraising Manager, Duchess of Kent House Trust, FREEPOST (SCE9218), Reading, RG30 2ZY web site at <[www.duchessofkenthouse.org.uk](http://www.duchessofkenthouse.org.uk)>

# Notes from our Society Chairman

*Nigel Saltmarsh*

## ***Our Pearl Anniversary***

It seems a long time ago now, but in October, the Society celebrated its Pearl Anniversary with a full day conference with presentations by some excellent speakers. Dr. Peter Durrant set the tone for the day with his informative presentation on the Berkshire Overseers and it was carried on by the remaining speakers. It was, I consider, a very successful day, made possible by the assistance of many of our volunteer members and by the superb planning of Jean Herbert. I extend my thanks to all concerned for a very pleasurable day.

## ***Who Do You Think You Are?***

Another good day for the Society was the result of the latest BBC television programme, “Who Do You Think You Are”, combining with BBC local radio stations to hold events over the UK. Our Society Research Centre, along with the Berkshire Record Office, opened our doors to family history researchers and newcomers to the hobby on Saturday, 11th February. Two of our branches, Bracknell & Wokingham and Newbury also took part. Bracknell took over the Wokingham Library and Newbury the Museum, both of the Chairmen reporting that they had an



**Who Do You Think You Are ? event in the Research Centre Computer Suite**

extremely good turnout.

There was a very good mix of people attending all three venues including some of the younger generation. What was very apparent was that several, having attempted to complete the ancestral chart provided, then queried "What do we have to do now"? This then gave our more experienced members the opportunity to offer the necessary guidance and pass them over to the Berkshire Record Office so they could then see the deposited records. We had three Society members assisting the resident staff in the Record Office. It was interesting to see the newcomer's reaction when they found the names of their ancestors on the microform copies of the parish registers, the starting perhaps of the addiction from which we all have. Hopefully we will have a few new members joining us in our hobby.

### ***Reading Research Centre***

We are very fortunate with the Reading site. We have a county Family History Society with its research centre to assist new hobbyists and teach them what needs to be done, and within thirty yards, the Berkshire Record Office holding the deposited county documents and registers for them to look at. If they are lucky enough to have local ancestors then adjacent to the research centre is the Reading Register Office where they may obtain their certificates.

### ***Situations no longer vacant***

We have experienced, as have other Societies, a shortage of members wishing to take on the various committee positions which ensure that we function smoothly and provide the services which all our members have come to expect. We lost our Secretary and also our Editor and it has taken a lot longer to find replacements than I expected. However I am very pleased that Tom James has taken the position as Secretary and Penny Stokes is our new Editor and will making her mark with the June issue of our journal. I extend a very warm welcome to them both.

We also have another member, Arthur Beech, taking over organising the roster of Research Centre Assistants from Judith

Morgan-Russell who has provided this service for us for a considerable time. It is not an easy task especially when trying to find a stand-in at short notice, but I'm sure that Arthur will be able to continue the good service that Judith provided. To assist him we have got Chad Hanna, (Webmaster Hat on), to put the roster in a special area on our website so the Research Centre Assistants can check it from home should they so desire. Even in our world of old records we are trying to get a bit more modern.

In spite of the "I do all my research on the Internet" syndrome, we are still maintaining a good membership count; mainly due to the Branch Chairmen, and Chairwomen. Monthly meetings have continued to flourish with the Programme Secretaries providing a good mix of speakers.

I would like to end by saying a thank you to all our members worldwide for their patience in waiting for receipt of this issue of the journal. I think that Chad Hanna, (Editor Hat on now), is now reaching the publication point, once I have submitted my notes and photographs. Thanks to Chad for this his second publication of the journal.

### ***In Memory of David Martin***

I wish to record the thoughtfulness and generosity of David who sadly passed away on 11th October 2005 and who bequeathed a donation of £250 to our Society. Both he and his wife have been associated with the Society since September 1986.

# The Banister Family of Finchampstead

Shaun Morley

The history of a formerly grand rural family who experienced the entire spectrum of political, religious and social changes of society provides an insight into the active use of a range of sources essential to the family historian.

**‘The Banisters may be regarded as having been one of the oldest county families in Berkshire’.**

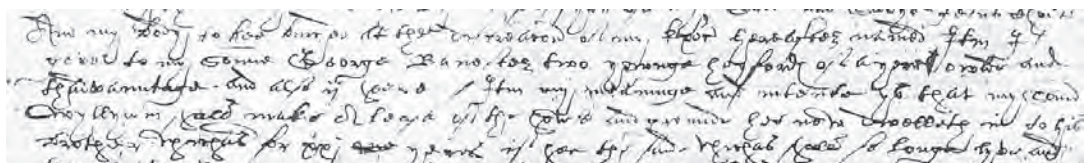
In 1550 John Banister died leaving his heir, John who was unable to inherit as he was too young. Whilst the complete pedigree of the Banisters will never be known for certain from their early beginnings in 1120 as Lords of the Manor of Finchampstead, proven descendancy begins with the aforementioned John. A ‘Terrier’ (a register or survey of land) of that year records that the Lord of the Manor of Aldermaston, Sir Humphrey Forster took possession of the estate during the young John’s minority for a period of ten years. Reference is made to the yearly rent of a ‘red rose’ for these lands indicating their continued descent from the original grant in 1120 A.D.

In 1585 the now adult John Banister appears on the Lay Subsidy roll at £5 (third highest in the parish, excepting the Manors) and paid 6s 9d. to the exchequer. No doubt this contribution helped arm the county and defeat the invading Spanish Armada just three years later. He died in 1597 and left an

enlightening will and inventory of his goods<sup>1</sup> now deposited in the Berkshire Record Office. For the first time the family and home come to life with the documents providing a real insight into late 16th century rural life. Various bequests are made to his children, George, Nicholas, Edward and William in stock animals, money and property. **‘I give to Edward my son a cow with a star in the forehead and a red sow, the cow to be had within one year next after my decease’** provides a descriptive element which brings a real warmth for the family historian. Clearly the cow with the ‘star’ was a prized possession as a servant, Edith was bequeathed **‘A brown heyfer not a star in the forehead’**.

Such wills provide much information. Without a bequest to **‘Ursula my wife the black mare which came with her’** and further reference to time before this marriage, we may never have known this was his second marriage. In fact, he had only wed Ursula Collyns at Eversley, the neighbouring parish on 23rd December 1594, a marriage that may well have otherwise been attributed to a more junior member of the family. The inventory attached to the will of **‘all singular goods and chattels moveable and unmoveable’** dated 1st April 1597 provides further personal detail. As well as a list of his own apparel, a number of rooms in the substantial house

Extract from the will of John Banister, 1597 courtesy of Berkshire Record Office



are revealed: a hall, parlour, cock loft, axle loft, milkhouse, buttery, loft over the buttery, an entry, a kitchen, chambers over the hall, parlour and beneath the entry.

The detail of each room reveals more.

#### In the Hall

**Item 2 tables, 1 frame, 2 formes, 5 joint stooles, 2 cupboards, 4 bords, 6 cushions, 3 painted cloth, 1 pair of Andirons, 2 pairs of potthangers, valued at 20 shillings.**

The above reference provides a picture of a substantial hall with two tables and a further frame to support four 'bords' making what we now call a trestle table. This was sufficient to seat a party that would fit onto two benches (formes) and five stools. Cushions and painted cloths hanging on the wall add a little luxury whilst a large open fire heats not only the room but also various hanging pots and the functional 'Andirons'. These were a pair of horizontal bars supported on three short feet, with an upright pillar in front, placed on each side of the hearth to support burning wood.

The kitchen contains the usual plethora of pots as well as an indication of diet; 3 flytches (sides) of bacon, salt, cheese, firkins of beer and various grain. A large quantity of utensils are evident – 18 pewter dishes, 18 spoons and 24 trenchers (wooden platters). The bedrooms seem equally well stocked with sheets, bedsteads, flock beds, pillows, bolsters and coverlets. The section entitled 'Out of doors' details the farm. 8 acres of wheat and oats and 6 acres of hay support the variety of farm animals, kine (cows), oxen, horses, hogs, ewes & lambs, bees and a variety of poultry are all separately listed. The total inventory value of £72 0s. 10d. which does not include land or other real estate, had no doubt been affected by the rampant inflation that engulfed England during the final years of the reign of Elizabeth I.

William, the eldest son was the main beneficiary of his father's estate. He moved to the family home from a house and grounds he held at Heckfield, Hampshire and, as detailed in his father's will, his brother Nicholas took up residence there. In October 1597 William was assessed at 40 shillings for the Lay Subsidy, equal second highest in the parish

and duly paid his 8 shillings taxation.

The boundary between the parishes of Finchampstead and Eversley in the neighbouring County of Hampshire mostly followed the river Blackwater but it is clear from early times that the Banisters also held an interest in Eversley parish. In 1601 a 'review of the 'Rayles' of Eversley Churchyard' was carried out by the church. The original of this document is now held together with other parish records in the Hampshire Record Office at Winchester. This showed that William Banister held two tenements adjacent to the churchyard, described thus: **'Two pannells of Rayles of about 14 foot in length with ye posts thereto belonging being ye fourth and fifth pannells from ye pale and next Mrs Eliz. Wyeths belonging to 2 tenements of William Banister, one whereof lately in the tenure of Thomas Poole is pulled down & ye other now in ye occupation of Samuel Banister'**.

In September 1607 his wife, Margaret Patie was buried. Although parish registers deposited at the Berkshire Record Office only exist from 1653, the older original records being destroyed, lost or not having been kept, Wiltshire and Swindon Record Office hold Bishops' Transcripts for Finchampstead. These were copies of the registers which were required to be sent to the Diocese annually. Not all years exist but they do provide additional information unavailable elsewhere. William Banister continued to hold land in the adjacent Hampshire village of Eversley. In 1609 and 1613 he was fined 4d. by the Court Baron of Bramshill Manor for non-appearance at the homage.

1613 saw a case brought against him in the Chancery Court by George Tattershall, Lord of the Manor of West Court<sup>2</sup>. It concerned land near to the mill in Finchampstead and whilst primarily it was a dispute between the owners of the two manors over the boundary between their lands, William Banister, whose family had sold the mill some 50 years earlier but who retained the lands was drawn into the dispute. The original records held in the National Archives at Kew reveal the two

opposing viewpoints of the dispute. On one point, George Tattershall contends that he agreed with William Banister to buy 'a fee simple' on land near to the mill for the sum of £25. He states in his Bill of Complaint that he paid William Banister 5 shillings, in effect to seal the deal. Further, he stated he was being defrauded and that William was acting in concert with Richard Harrison of East Court with whom he had the land dispute. The mill described in this case survives today as the New Mill restaurant.

William Banister made a robust defence in his response to the Bill. He alleged that Tattershall was, 'supposing ye said defendant to be plain ignorant and unskilful in ye affairs of ye world to angle some part of his estate from him'. Much of the facts were agreed – there was an agreement to sell land to Tattershall for £25 and that 5 shillings was paid to him. However, he stated that the agreement was to involve a third party, one William Smith who was Tattershall's brother in law. Tattershall was to arrange for the sale of a property called 'Hall House' owned by Smith to William Banister. This he failed to do.

The response of William Banister confirms that the ancestral home '**...commonly called Banisters Place which tenement holdeth of ye Kings Majesty ...**' and '**... partaketh it in by free socage by ye yearly rent of one penny and payable at ye feast of ye nativity of Saint John Baptist and not of ye Manor of ye complainant' (West Court)**'. The Red Rose had been replaced by a peppercorn and one penny.

Research into the Berkshire Marriage Bonds revealed they were destroyed in the Second World War. It is fortunate that a 19th Century index taken from the originals now survives in the Berkshire Record Office. An entry for an unspecified date in 1616 indicated a marriage bond between William Banister, who was by then residing at Sonning and Mary Staples of Reading. No indication of the place of marriage is given but the parish records of Reading St Giles reveals they married on 9th February the same year. His

brother, Nicholas died in 1616 and in his will it indicates that William owed him £6.

William died in 1619 '**seised of two messuages and 124 acres of land held of the Manor of Finchampstead West Court, Thomas Banister being his son and heir**'. His will<sup>3</sup> made the usual family bequests to brothers and children as well as more distant relatives by marriage termed 'kinsmen'. His inventory was the contrary to his father's, being an example of brevity itself. Three lines revealed 'wearing apparel' and goods and debts (without detail) and an old chest amounted to £115. It is clear his son, Thomas had already taken over the running and management of the lands at Finchampstead and such transfer was rarely exhibited in wills.

It is good fortune that some of the Banisters' land was held direct from the Crown for until 1660, an 'Inquisition Post Mortem' was required to be held by jury on the death of such a landholder. Extremely useful to the genealogist, the jury had to determine amongst other things, the nature and extent of the landholding and the name and age of the next heir. A search of the documents of the National Archives at Kew via the Internet revealed such documents are held and provided the relevant reference.

Thomas Banister had maintained the family interests in Eversley. A painstaking search of the manorial records of Bramshill revealed that in January 1620, the year the Pilgrim Fathers set sail for America, one Thomas Selly, a well educated artisan, petitioned the Lord of the Manor of Bramshill (in the parish of Eversley) for payment of the balance of monies due to him following extensive work carried out at the manor house during the preceding four years. £17 of a total of £71 was due and the account details that on 26th October 1617 Selly received £10 on account from Thomas Banister for the work. Exactly why he paid this amount is unclear.

The manorial records of Finchampstead West Court<sup>4</sup> reveal that in 1623 Thomas Banister held lands called 'Forberrry at Midsommer' at the rent of one penny and a red rose. Freehold and leasehold lands were

also held at a combined rent of £15 6s.1d. In 1629 he was assessed for Lay Subsidy at £2 and duly paid 6s. and a further rent to West Court of 2d. in 1642.

1650 saw George Tattershall take further legal action against the Banister family in the High Court of Chancery. On 17th May he made a Bill of Complaint alleging that Thomas Banister had not paid various rents to the manor over the preceding eighteen years and was in possession of various lands of which he did not know the details but which he believed he was owed rent. With direct reference to the English Civil War (King Charles I had been beheaded just sixteen months previously), he stated **“that the said Thomas Banister having lately (viz.) since the time of the late wars and troubles within this realm casually and by sinister indirect and unlawful ways and means obtained and gotten into the hands custody and possession of him the said Thomas Banister or of some other person or persons ... and concealed and suppressed and from ye said Orator”**. Clearly, if such dues had not been paid to the Manor over this period of time, the matter would normally be brought before the Court Baron, the assembly of freehold tenants of a Manor under the Lord. Tattershall made further claim that he did not hold these manorial records but that Thomas Banister was in possession and concealing **“... ancient records, court rolls, books of survey, terriers<sup>5</sup> and rentals and other writings”**. The manor of Finchampstead Westcourt was clearly in some state of disarray with eighteen years of such valuable documents missing from their possession.

Tattershall further alleged that Thomas Banister or his ancestors were in possession of a property, **“unam placeam terre vocatum le Forburrie”**, meaning a piece of land, a building or tenement called the Forburry and he sought detail of this land and all other property in his possession. This would appear to be the same Forburry on which the rent of one penny and a red rose was paid in 1623 to Westcourt Manor.

The Answer to the Bill of Complaint by

Thomas is a family historian’s dream. Full detail was given of all land and property owned in the parish and several references made to historical family relationships. He denies all knowledge of land called the Forburry but details his ancestral home, known by the name Banisters Place or Banisters Hatch which had been held for many generations under the yearly rent identical to that detailed for the Forburry and due on the feast of John the Baptist. He further adds that on the 124 acres of land associated with this property “was anciently a mill”, confirming the property was one and the same as was in the possession of Nicholas Banister in 1337. He further confirmed that it was his grandfather who was taken as Ward by Sir Humphrey Forster. Possession of the manorial records was of course, denied.

In 1650 Thomas Banister is described as a Bailiff of Sonning Hundred at the Berkshire Assizes<sup>6</sup> and six years later he died intestate. Administration was granted to his widow, Anne on 11th April<sup>7</sup>. No further details can be found of any other probate records. The vagaries of parish records completion during the mid 17th century, much of which was due to the years of the Commonwealth when Oliver Cromwell was Protector, saw no records of baptisms, marriages or burials survive from this period.

John Banister inherited his father’s estate but was to be head of the family for only eight years. His infant son Thomas had been buried at Finchampstead two years earlier when John was described as ‘of Eversley’ clearly displaying the family link to the neighbouring village. In 1661, the same year his son and heir John was baptised, he purchased land from a Robert Morley called ‘Whites’. The manorial records of East Court reveal **“We present that Robert Morey Gent. and Jane his wife hath since the last court alienated to John Banister 3 closes of land called Whites and that there is due to court a relief quit rent of 3s. 9d. paid”<sup>4</sup>**.

The Hearth Tax of 1662 provided another indication of relative wealth. John Banister was assessed at five hearths whilst the manors of West & East Court were assessed at seven

In the Name of God Amen  
 This Eighteenth Day of April in the Sixteenth year of the Reigne  
 of our Sovereign Lord King Charles the Second and in the year  
 of our said Lord 1664. I John Banister of Highamstead in the County of  
 Berks: Yeoman being in good health and memory pray God be God for  
 the friend and knowing the uncertainty of this life in such and being  
 desirous to settle things in order according all former Wills by me  
 made: Do make and ordain this my last Will and Testament in maner  
 and forme following: First I commend my soule into the hands of All  
 mighty God my Creator bestowing in this my will and ordination of my  
 precious soule to obtain forgiveness of all my sinnes and my body  
 to the Earth to be buried in such decent manner as my Executors shall  
 appoint And as for my Realties, Estates as the Law in such both  
 and my will and ordination shall be disposed of as followeth Item I  
 give and bequeath unto My very loving wife (now) living and to  
 be paid out of my Lands called or known by the name of Banisters place  
 during the naturall life of my Mother Anne Banister and after the  
 decease of my Mother then to have the the benefitt of her jointure and  
 also the use of my household goods so long as she shall keep her self a  
 widow giving good security to my Executors to have them as good as she  
 findes them. Item I do give and bequeath unto my Mother Anne Banister  
 during her naturall life the house and Land and the profits of it that  
 she now dwells in, Item I give and bequeath unto John Banister my  
 sonne and heire apparent all my houses and Lands and Tenants Cotes &  
 now in my possession which descended to me as heire apparent to my  
 late father deceased and also all my household goods within Lands. Item I  
 give and bequeath unto my daughter Sarah Banister my Land in the parish  
 of Highamstead which I purchased of Mr Robert Mowden called by the  
 name of Whites and all the same.

and eight hearths respectively. He had married Mary Rither, descendant of another family of landowners in the parish. John was buried in 1664 with his eldest son of the same name being just four years of age. In his will<sup>8</sup> he gave the use of his house ‘Banisters Place’ to his mother, Anne whilst she was alive. After her death, the house and land were to pass to his son, John. His wife received an allowance of £20 per year. He had only made the will in April of the same year and described himself as a **‘Yeoman being in perfect health and memory’**.

A report of homage to the manor of East Court in 1675 detailed that he died ‘seized of a house and lands called “Whites” and his will details that this property was bequeathed to his daughter Sarah. On 28th December 1664 an inventory of his goods was taken. The rooms are described in similar fashion to the inventory of his great grandfather 67 years earlier. The value of £196 was given to all

except his houses and land.

The availability and increasingly well indexed historical documentary holdings enable detailed family reconstruction. That of the Banister family may be typical of a relatively affluent country family who appear to have led an influential, yet in many ways unspectacular existence in a corner of Berkshire.

<sup>1</sup> Berkshire Record Office, ref: D/A1/41/87A

<sup>2</sup> The National Archives, ref: C2/JAS1/T3/40

<sup>3</sup> Berkshire Record Office, ref: D/A1/43/31

<sup>4</sup> Berkshire Record Office, ref: D/ER/ M 6 – 10

<sup>5</sup> A register or roll of landed estate

<sup>6</sup> Berkshire Record Office

<sup>7</sup> The National Archives, Prerogative Court of Canterbury 1656, PROB 4/1656/80

<sup>8</sup> The National Archives, Prerogative Court of Canterbury 1665 ref: PROB 11/316 quire 11



# Our Thirtieth Anniversary Conference

*Lesley Pattinson*

The 30th Anniversary Conference held at Theale on Saturday, 8th October proved to be a most enjoyable day, with some very interesting stands from the various branches and an excellent choice of speakers. Much hard work and preparation must have gone on behind the scenes. My congratulations and thanks to all those involved.

## ***The Old Poor Law***

The day began with a fascinating and informative lecture by **Dr Peter Durrant** of Berkshire Record Office on **'The Poor Law with reference to Berkshire and the Overseer's Project'**. He invited us to think about history in terms of understanding people, their movements and circumstances, not just as a costume drama with physical differences from today. History, he suggested, is made more interesting if we understand the thought patterns and culture of the day; and from the documents left by the Overseers of the Poor we are able to gain an insight into the daily lives of ordinary people.

The old poor law, he said, was the framework for the management of the poor for almost 250 years, until the Poor Law Amendment Act in 1834. Parish-based, it was managed by overseers and administered by JPs. Rates were levied to fund poor relief, which was spent on benefits-in-kind such as food and shoes, on work schemes, e.g. in workhouses, but most went on the dole, paid to widows, the poor, and the sick. The recipients of relief, and the administrators, are named in the overseers papers, making

them an important source for family historians.

Under the Laws of Settlement a pauper was only entitled to relief in one parish, his or her Parish of Settlement. This gave rise to the following documents with often detailed information about a person's life history:

Examinations,  
Settlement Certificates, and  
Removal Orders.

About six thousand of these documents have survived in Berkshire.

From personal experience I can confirm how interesting this resource can be. Using the Access to Archives website <[www.a2a.org.uk](http://www.a2a.org.uk)>, I found evidence of Examination and Removal Orders for ancestors of mine in Cornwall. From these I was able to put together the sorry tale of one Thomas **Talling** who repeatedly deserted his wife Grace and their seven children, including 'an Infant Child not yet baptised'. Poor Grace was the subject of a Removal Order, requiring her to move from one parish to the next in the middle of winter with the seven children in tow. In the end Thomas was adjudged 'an Incurable Rogue within the Meaning of the Statutes' and despatched to Bodmin Jail!

Family historians often encounter the problem of children born out of wedlock. In these cases, an Examination Order, Bastardy Bond or Justice Order may reveal the name of the father. Sometimes there is an Apprenticeship Order to secure maintenance of a pauper child.

Now, after twelve years of hard work by volunteers we are fortunate to be able to

access these fascinating documents, which number about twelve thousand, on CD from Berkshire FHS : 'The Berkshire Overseers Papers'.

**Jocie McBride,  
Publications  
Manager presenting  
the Overseers Papers  
CD to Dr Peter  
Durrant**



### ***National Monuments Record Centre***

After a break for refreshments, we had a choice of lectures – four talks were run in parallel. I had opted for **Jane Golding** talking about the **National Monuments Record Centre at Swindon** – her place of work. She involved her audience from the start with a quiz using photos from their extensive collection. They hold 500,000 photos of buildings, and more than two and a half million aerial photos of locations in England. I had not been aware of this resource before, or that so much is now available online at <[www.imagesofengland.org.uk](http://www.imagesofengland.org.uk)> and <[www.english-heritage.org.uk/viewfinder](http://www.english-heritage.org.uk/viewfinder)>

Lunch was an opportunity to meet and talk to fellow family historians from other branches – and to enjoy the food; thanks to those who organised it all so well.

### ***Writing your Family History***

Once again there was a choice of lectures in the afternoon. I went along to '**Writing your Family History**' by **Barry Jerome**. This was a most useful session, with much practical advice. He discussed getting started (often the most daunting part!), structuring your work, how to illustrate your story, and finally advice about printing and publishing. An inspiring speaker – I'm sure everyone felt more confident afterwards about having a go at this enjoyable and creative side of family history.

### ***The Future of the Internet***

The final lecture of the day was by **Peter Christian**, who spoke on '**The Future of the Internet for Genealogists**'. There is now an enormous amount of data available online to family historians, while ongoing and future projects offer even more. He touched on:

- All **UK censuses** online in 2006.
- **Civil Registration**: Free BMD currently have 106 million entries (40% of the total), and UK BMD now covers nineteen areas/local authorities.
- **The DOVE project**: Digitisation of Vital Events, the contract awarded to Siemens. Completion date 2008.
- **New Legislation** on access to Civil Registration records.
- **Images for Indexes**: Many datasets are indexes only, especially parish registers. The LDS major digitisation project is to provide images of entries from parish registers on the IGI. At FamilyHistoryOnline the possibility of images to accompany record entries has been discussed – it will be up to individual FHS's. Scottish parish records are now fully indexed, and the 'Scotland's People' web site plan to put images online.
- The **Trafalgar Database** recently set up by the TNA.
- **Commercial Data Sources**.
- **Lottery Funded Projects**, e.g. Old Bailey proceedings.
- **Family History Societies** who provide quantities of data online.

My ancestors are a farflung lot, coming from Cornwall, Durham, Yorkshire and Norfolk, so that once upon a time I had wondered how useful it would be to join Berkshire FHS, my local society. How mistaken I was! I have now been a member for four years, benefiting enormously from the help and information available on many aspects of family history. I went away from this conference feeling very fortunate to have access to such an interesting, knowledgeable and friendly group of people.

# Berkshire Burial Index

November 2005 CD-ROM update

The parishes and periods included in the November 2005 update of the Berkshire Burial Index on CD-ROM are shown below, totalling more than 420,000 entries. New entries added since the publication, in November 2004, of the second update to the original 2002 CD-ROM are shown in **bold italics**.

Abingdon Baptist (Lower Meeting House, Ock St)	1764–1789	Binfield All Saints	1813–1832, <b>1832–1884</b> and 1884–1957
Abingdon Congregational (Upper Meeting House)	1787–1836	Bisham All Saints	1560–1707, 1707–1708 (BTs) and 1709–1849
Aldermaston St Mary the Virgin	1813–1882 and 1882–1992	Blewbury St Michael	<b>1720–1754</b> and <b>1813–1855</b>
Aldworth St Mary	1813–1978	Boxford St Andrew	1558–1876
Appleford SS Peter & Paul	1564–1812 and <b>1813–1988</b>	Bracknell Holy Trinity	1851–1945
Appleton St Laurence	1813–1891	Bradfield St Andrew	1540–1685, 1691–1693 (BTs) and 1695–1952
Arborfield St Bartholomew	1580–1700 (BTs), <b>1700 – 1707 (BTs)</b> , <b>1707–1736</b> , <b>1736 – 1739 (BTs)</b> , <b>1739–1812</b> and 1813–1925	Bradfield Workhouse	1845–1932
Ascot Heath All Saints	1865–1958	Bray St Michael	1813–1929
Ashampstead St Clement	1607–1686 (BTs) and 1686–1837	Brightwalton All Saints	1562–1922
Ashbury St Mary	1612–1638 (BTs) and 1734–1869	Brightwell St Bartholomew	1813–1867
Aston Tirrold St Michael	1813–1960	Brimpton St Peter	1607–1674 (BTs), 1678–1734, 1735–1755 (BTs) and 1756–1901
Avington	1700–1725 (BTs) and 1727–1994	Buckland St Mary the Virgin	1813–1930
Barkham St James	1539–1733, 1733–1740 (BTs) and 1741–1985	Bucklebury St Mary the Virgin	1539–1910
Basildon St Bartholomew	1667–1982	Burghfield St Mary	1559–1870 and <b>1871–2005</b>
Bearwood St Catherine	1846–1929	Buscot St Mary	1813–1950
Beech Hill St Mary the Virgin	1868–1996	Catmore St Margaret	1728–1810 and 1814–1985
Beedon St Nicholas	1681–1969	Caversham Hemdean Road Cemetery	1924–1993
Beenham St Mary	1561–1907	Caversham St Peter	1597–1955
Besselsleigh St Lawrence	1689–1994	Chaddleworth St Andrew	1538–1676, 1677 (BTs) and 1678–1919
		Charney Bassett St Peter	<b>1813–1979</b>
		Chieveley St Mary the Virgin	1647–1812, <b>1813–1874</b> and 1874–2003
		Childrey St Mary the Virgin	1813–1883
		Cholsey County Lunatic Asylum	1894–1917
		Cholsey St Mary	<b>1874–1900</b> and 1900–1929
		Clewer St Andrew	1607–1851 and <b>1851–1856</b>
		Cold Ash St Mark	1865–1947

Coleshill All Saints	1813–1986	Harwell St Matthew	
Combe St Swithin	1729–1812		1688–1812, <b>1813–1865</b> and 1866–1943
Compton SS Mary & Nicholas	1553–1901	Hatford St George/ Holy Trinity	
Compton Beauchamp St Swithin	1813–1994		<b>1539–1812</b> and 1813–1969
Cookham Holy Trinity	1656–1935	Hermitage Holy Trinity	1840–1978
Crowthorne St John the Baptist	1900–1968	Hinton Waldrist St Margaret	1961–1977
Cumnor St Michael	1813–1970	Hungerford Independent	1819–1830
Denchworth St James	<b>1636–1812</b>	Hungerford St Lawrence	
Drayton St Peter	<b>1919–1967</b>		1700–1813 and 1914–1969
Earley St Peter	1854–1916	Hurley St Mary the Virgin	1563–1864
East Challow St Nicholas	1813–1829	Hurst St Nicholas	1579–1582 (BTs),
East Garston All Saints	1813–1876		1585–1605, 1605–1621 (BTs), 1621–1623,
East Hendred St Augustine	1813–1863		1623–1633 (BTs) and 1633–2004
Easthampstead		Inkpen St Michael & All Angels	
SS Michael & Mary Magdalene	1558–1915		1607–1623 (BTs) and 1878–1986
East Ilsley St Mary	1649–2000	Kintbury St Mary	1558–1925
East Lockinge All Saints	1546–1663,	Knowl Hill St Peter	1842–2002
<b>1664–1739</b> , 1739–1788, <b>1788–1812</b>		Lambourn St Michael & All Angels	
and 1862–1866			1560–1837 and 1895–1933
East Shefford	1604 to 1734, 1734–1773 (BTs)	Letcombe Bassett St Michael & All Angels	
and 1774 to 1917			1776–1989
Eaton Hastings St Michael & All Angels	1813–1998	Letcombe Regis St Andrew	1813–1863
Enborne St Michael & All Angels		Littleworth Holy Ascension	<b>1839–1909</b>
1607–1638 (BTs), 1726–1837		Little Wittenham St Peter	<b>1813–1992</b>
and <b>1838–1929</b>		Long Wittenham St Mary the Virgin	
Englefield St Mark	1813–1935		<b>1884–1979</b>
Faringdon All Saints	1644–1688,	Maidenhead Boyne Hill All Saints	1857–1948
<b>1688–1780</b> , 1781–1812, <b>1813–1842</b> ,		Maidenhead Congregational	
<b>1896–1918</b> and 1918–1948			1791–1837 and 1845–1908
Farnborough All Saints		Maidenhead High Street Wesleyan Methodist	
1607–1738 (BTs) and 1813–1835 (BTs)			1858–1903
Fawley St Mary	1550–1987	Maidenhead New Chapel	
Fernham St John	1860–1994	(Countess of Huntingdon)	1843–1858
Finchampstead St James	1724–1812	Maidenhead St Luke	1866–1890
Frilsham St Frideswide		Midgham St Matthew	
1607–1710 (BTs), 1711–1768,			1638–1733 and 1753–1980
1769–1804 (BTs) and 1813–1835 (BTs)		Milton St Blaise	1662–1938
Grazeley Holy Trinity		Mortimer West End St Saviour	1869–1982
<b>1851–1905</b> and 1905–1964		Moulsford St Mary the Virgin	<b>1813–1992</b>
Great Coxwell St Giles	1813–1868	Newbury Baptist	1773–1823
Greenham St Mary	1799–1914	Newbury Baptist (Northcroft Lane)	1818–1837
Grove St James	1832–1926	Newbury Lower Meeting House Independent	
Hagbourne St Andrew	1612–1638 (BTs),		1784–1837
1661–1751, 1745–1756 (BTs) and 1757–1905		Newbury St John the Evangelist	1860–1900
Hampstead Norreys St Mary		Newbury St Nicolas	
1543–1593, 1598–1626, 1628–1638 (BTs),			1746–1773, <b>1783–1797</b> and 1798–1890
1666–1820 and <b>1821–1919</b>		Newbury Upper Meeting House Presbyterian	
Hamstead Marshall St Mary			1783–1836
<b>1675–1771</b> and 1772–1812			

New Windsor All Saints (recorded in register of New Windsor St John the Baptist)	1974–1988	Sotwell St James	<b>1693–1812</b>
New Windsor St George's Chapel	1625–1737	South Moreton St John the Baptist	<b>1813–1994</b>
New Windsor St John the Baptist	1609–1744, <b>1744–1750</b> and 1750–1988	Sparsholt Holy Cross	1558–1865
North Moreton All Saints	1880–1996	Speen St Mary the Virgin	1614–1628 (BTs) and 1629–1904
Old Windsor SS Peter & Andrew	<b>1634–1700 (BTs)</b> , 1700–1771 (BTs) and 1772–1812	Speenhamland St Mary	1831–1881
Padworth St John the Baptist	1607–1723 (BTs) and 1724–1981	Stanford Dingley St Denys	1538–1979
Pangbourne Independent Chapel	1836 only	Steventon St Michael & All Angels	<b>1813–1922</b>
Pangbourne St James the Less	<b>1678–1926</b>	Stratfield Mortimer St Mary	1681–1977
Peasemore St Barnabas	1538–1879	Streatley St Mary	1679–1812
Purley St Mary the Virgin	1663–1900	Stubbings St James the Less	<b>1852–1949</b>
Pusey All Saints	<b>1761–1835 (BTs)</b>	Sulham St Nicholas	1612–1724 (BTs) and 1724–1850
Radley St James the Great	1813–1981	Sulhamstead Abbots St Mary	<b>1602–1812</b> and 1813–1995
Reading Broad Street Independent	1787–1869 and 1875–1881	Sulhamstead Bannister St Michael	<b>1654–1811</b> and 1813–1994
Reading Castle Street Congregational	1857–1862	Sunningdale Holy Trinity	1842–1938
Reading Holy Trinity	1834–1855	Sunninghill St Michael & All Angels	1561–1641, 1653–1947
Reading King's Road Baptist Church	1785–1835	Sunningwell St Leonard	<b>1812–1960</b>
Reading London Road Cemetery (burials in consecrated ground)	1843–1858	Sutton Courtenay All Saints	<b>1813–1888</b> and <b>1919–1956</b>
Reading London Road Cemetery (burials in unconsecrated ground)	1843–1863	Swallowfield All Saints	1539–1552, 1587–1597 and 1638–1931
Reading St Giles	<b>1564–1598</b> , <b>1636–1644</b> , 1648–1812, <b>1813–1836</b> , <b>1840–1895</b> and <b>1955–1990</b>	Thatcham/Bucklebury Congregational/Independent Chapel	1819–1871
Reading St Laurence	1603–1901	Thatcham St Mary	<b>1771–1805</b> and 1806–1914
Reading St Mary	<b>1718–1749</b> , 1749–1757, <b>1758–1767</b> and 1768–1812	Theale Holy Trinity	1832–1932
Reading St Stephen	1929–1956	Tidmarsh St Lawrence	1813–1999
Remenham St Nicholas	<b>1605–1696 (BTs)</b> , 1697–1762, <b>1762–1764 (BTs)</b> and 1764–1909	Tilehurst St George	1886–1954
Ruscombe St James the Great	1705–1812	Tilehurst St Michael	1614–1629 (BTs) and 1716–1941
Sandhurst St Michael	1580–1593 (BTs), 1603–1696, <b>1610–1768 (BTs)</b> , 1769–1812 (BTs) and 1869–1959	Twyford St Mary	1847–1889 and <b>1889–1925</b>
Shaw cum Donnington St Mary the Virgin	1647–1932	Uffington St Mary	<b>1813–1836</b> and <b>1856–1946</b>
Shinfield St Mary	1653–1844	Ufton Nervet St Peter	1607–1635 (BTs) and 1636–1834
Shottesbrooke St John the Baptist	1567–1811	Wallingford St Leonard	<b>1671–1678</b> (in register of Wallingford St Mary the More), <b>1813–1869</b> , <b>1873–1899</b> and <b>1929–1975</b>
Shrivenham St Andrew	<b>1813–1867</b>	Wallingford St Mary the More	<b>1671–1678</b> , <b>1711–1712</b> and <b>1854–1871</b>
Sonning St Andrew	<b>1813–1906</b>	Wallingford St Peter	<b>1671–1678</b> (in register of Wallingford St Mary the More) and <b>1711–1812</b>
		Waltham St Lawrence	1931–1995

Wantage SS Peter & Paul	<b>1813–1852,</b> 1852–1863, <b>1863–1870</b> and <b>1892–1902</b>
Warfield St Michael	1779–1922
Wargrave St Mary	1872–1940
Wasing St Nicholas	1608–1736 (BTs) and 1763–1990
Welford St Gregory	<b>1749–1812</b> and 1813–1900
West Hanney St James the Great	1783–1964
West Hendred Holy Trinity	1727–1972
West Ilsley All Saints	1558–1967
West Shefford St Mary	1599–1897
West Woodhay St Laurence	1656–1724, 1744–1768 (BTs) and 1813–1985
White Waltham St Mary	1860–1937
Winkfield St Mary	1813–1961
Winterbourne St James the Less	1567–1850
Wokingham All Saints	1813–1841 and <b>1841–1854</b>
Wokingham Baptist Church	1841–1906
Wokingham Free Church Burial Ground	1921–1954 and <b>1954–2004</b>
Wokingham St Paul	1864–1895 and 1924–1961
Woodley Congregational (Woodley Chapel)	1858–1905
Woolhampton St Peter	1607–1636 (BTs), 1636–1746, 1749–1759 (BTs) and 1761–1926
Yattendon SS Peter & Paul	1813–1982

**Note:** do not regard this as an exhaustive list of all the parishes and chapels in Berkshire. Notable omissions begin with Abingdon St Helens. Comprehensive lists can be found in the National Index of Parish Registers Vol 8 Pt 1 Berkshire (2nd edition) published by the Society of Genealogists and in the handlists published by the Berkshire Record Office and available from the Bookstall.

Thank you to David Wright and his team for all the work that has gone into transcribing, entering and checking these records. We are also grateful to the Berkshire Record Office for the loan of fiche copies of the parish registers to facilitate this work. Bishops Transcripts (BTs) will have required work at the Wiltshire and Swindon Record Office in most instances. The work of Phil Wood and Jocie McBride in producing the CD should not be overlooked.

The 4th Edition of the Berkshire Burial Index can be ordered from our bookshop or you may update any previous Editions that you have purchased. For details visit the bookshop at <[www.berksfhs.org.uk/berksfhsbooks](http://www.berksfhs.org.uk/berksfhsbooks)> or see the centre pages.

The National Burial Index CDs produced by the Federation of Family History Societies contains an earlier version of the Burial Index and provides more limited information.

### *Marriage Index*

The Society's Berkshire Name Search service provides access to the growing Marriage Index. This is indexed by both brides and grooms and consists almost exclusively of information prior to the start of civil registration in 1837.

Details of the Name Search Service can be found on page 35.

### *Christening Index*

Work has been started on a Christening index and this is still at an early stage.

### **Wiltshire's Nimrod Indexes**

Marriage Database – All Wilts 1538-1837,  
Wills Database 1242-1887, Varied Index  
Database 1242-1900, 1851 Census Database  
- All Wilts.

For each index: Individual person searches  
£3.00. Complete surname printouts from  
£8.00 - 10% discount on index searches for  
Wiltshire FHS members

Location of Documents Guides for all 327  
Wiltshire parishes.

Other limited personal research work under-  
taken.

David & Jenny Carter, Docton Court, 2  
Myrtle Street, Appledore, Bideford, Devon  
EX39 1PH

Email: <[enquiries@nimrodindex.co.uk](mailto:enquiries@nimrodindex.co.uk)>

**Now with over one million entries in  
our databases!**

# Will of William Leach, grocer of Wokingham, 1762

PROB 11/878 294-343 113/116

Proved 16 July 1762

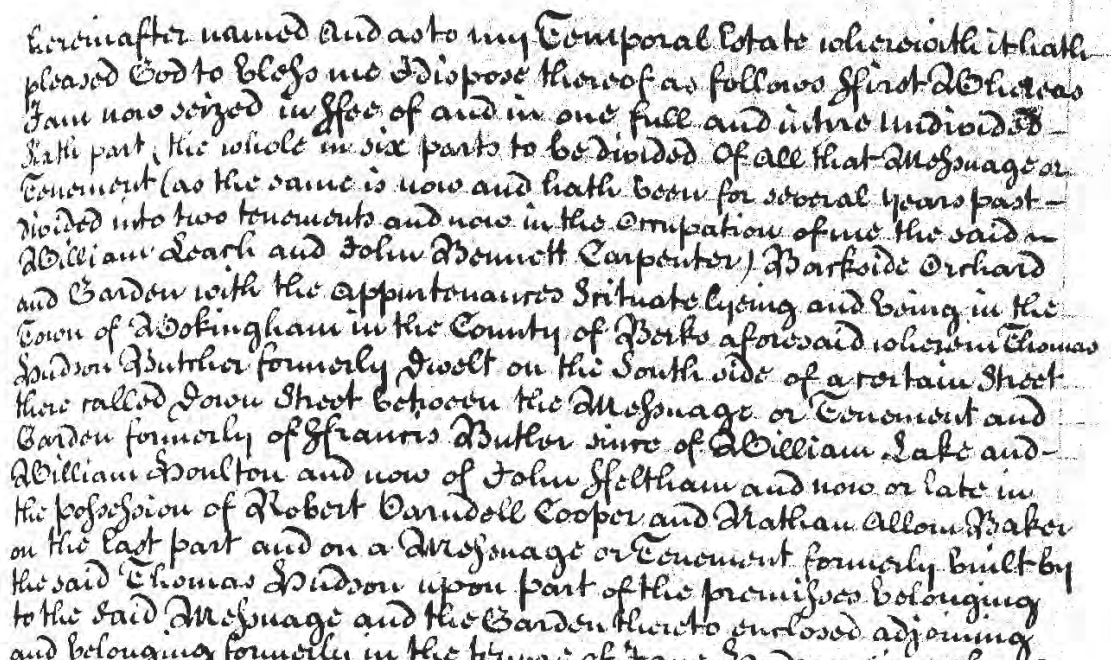
transcribed by Pam Turner of Takapuna, New Zealand

I have been researching a family called **Leach** and have recently linked them back to the town of Wokingham in Berkshire.

As part of that research I have been transcribing Prerogative Court of Canterbury (PCC) wills connected with the family. One will in particular seemed to be of a more general interest for people researching in Wokingham as it mentions a number of different families and links them to particular sites.

In the name of God Amen I *William Leach* of the town of Wokingham in the county of Berks grocer being in health of body and perfect mind and memory thanks be given to

Almighty God for the same and calling to mind the uncertainty of this life do make and ordain this to be my last Will and Testament in manner and form following (that is to say) my soul I commend to God who gave it and my body to the earth to be decently buried at the discretion of my executrix hereinafter named And as to my temporal estate wherewith it hath pleased God to bless me I dispose thereof as follows first whereas I am now seized in fee of and in one full and intire undivided half part the whole in six parts to be divided of all that messuage or tenement (as the same is now and hath been for several years past divided into two tenements and now in the occupation of me the said William Leach and John Donnett Carpenter) Barkside Orchard and Garden with the appurtenances situate lying and being in the Town of Wokingham in the County of Berks aforesaid wherewith Thomas Hudson formerly dwelt on the South side of a certain Street there called Dove Street between the Messuage or Tenement and Garden formerly of Francis Butler sire of William Lake and William Boulton and now of John Feltham and now or late in the possession of Robert Barndall Cooper and Nathaniel Allon Baker on the East part and on a Messuage or Tenement formerly built by the said Thomas Hudson upon part of the premises belonging to the said Messuage and the Garden thereto enclosed adjoining and belounging formerly in the tenure of the said



Extract from the will of  
William Leach, 1762  
courtesy of  
The National Archives

Leach and John **Bennett** carpenter) Barkside Orchard and Garden with the appurtenances situate lying and being in the town of Wokingham in the county of Berks aforesaid wherein Thomas **Hudson** butcher formerly dwelt on the south side of a certain street there called Town Street between the messuage or tenement and garden formerly of Francis **Butler** since of William **Lake** and William **Boulton** and now of John **Feltham** and now or late in the possession of Robert **Oarndell** cooper and Nathan **Allom** baker on the last part and on a messuage or tenement formerly built by the said Thomas Hudson upon part of the premises belonging to the said messuage and the garden thereto enclosed adjoining and belonging formerly in the tenure of Jane Hudson since of Francis **Parsons** and late of Mary **Shant** widow but now of ---- [blank in the original] and on another garden belonging to the house formerly of Benjamin Feltham wherein Henry Butler deceased formerly dwelt and afterwards in the occupation of Richard **Neatherclift** and since of Richard **Paire** wheelwright and now of Thomas **Knight** taylor and others on the west part and a parcel of land called the Pitts formerly in the occupation of John **Lawrence** and now of John Feltham carpenter on the south part thereof and the said street on the north part thereof and am also seized in fee of and in one full and intire sixth part the whole in six parts to be divided of and in all that messuage or tenement with the appurtenances formerly in the tenure of John **Ball** of Evendens afterwards of John **Clement** cordwainer and the widow **Goodwin** and since of John **Ghost** but now of Thomas Ghost and known by the name of the Weavers Arms situate lying and being in the town of Wokingham aforesaid in the said county of Berks on the south side of a certain street called Roth Street otherwise Rose Street bounded with the messuage or tenement late in the occupation of Benjamin **Wilkinson** but now of ---[blank on the original] on the east part and the messuage or tenement late of William **Jollen** but now of --- [blank on the original] on the west part and the said street on the north part

and am also seized in fee and in one full and intire sixth part the whole in six parts to be divided of and in all that close or parcel of meadow ground commonly called or known by the name of Amberwoods containing by estimation four acres be he same more or less and also of and in that close of land called Upper Pages containing by estimation four acres more or less adjoining to and lying on the east side of the highway leading from Reading to Hurst and of and in all that close of arable land called lower Pages containing by estimation three acres more or less adjoining to and lying on the east side of the highway leading from Reading to Swall place situate lying and being in the parish of Sunning in the county of Berks bounded with Cosmore Common on the south part with a common road called Edge Road on the north part with the land late of Sir William **Kirk** baronet but now of Daniel Kirk esquire on the east part and with the river Loddon on the west and also of all that piece of ground called Cosmore Eyott containing by estimation half an acre be it more or less situate lying and being in the said parish of Sunning in the said county of Berks and lying on the said river near to and directly opposite against the said meadow ground called Amberwoods and the said Eyott late was in the occupation of Richard **Bushnell** basket maker but now of -- - [blank in the original] bounded with the said river on the last part with an Eyott lately belonging to the said Sir William Kirk now or late in the occupation of John **Marlow** on the south and with a close of arable or pasture ground now or late in the occupation of Alexander **Ball** on the west and also of the water or free fishing in all or so much of the river Loddon as runneth and lyeth between the said meadow called Amberwoods and the said Eyott called Cosmore Eyott the which said sixth part the whole in six parts to be divided of all and every the aforesaid messuages tenements lands Eyott water and free fishery and hereditaments I the said William Leach lately purchased of and from my nephew Thomas **Golding** and Sarah his wife and of and in all houses outhouses curtilages buildings barns stables lights



easements ways waters watercourses profits commons commoditys advantages hereditaments and appurtenances thereunto belonging and am also seized in fee of all those two closes of arable or pasture land containing by estimation seven acres more or less lying and being in the parish of Wokingham in the county of Berks in or near a certain common there called East Heath and which were by me lately purchased of and from William **Miller** the younger and all and singular the hereditaments and promises thereunto belonging now I do hereby give and devise the same unto my loving wife Sarah Leach and her assigns for and during the term of her natural life and from and after her decease I give and devise the same unto my only child William Leach and to his heirs and assigns forever with power by his last Will and Testament or otherwise to give and dispose of the reversion and fee simple thereof in the life time of his said mother (my present wife Sarah) subject nevertheless and without prejudice to her life interest therein and I do hereby give and bequeath unto my said son William Leach the sum of one hundred pounds to be paid unto him out of my personal estate within six months next after my decease and as to all the rest residue and remainder of my personal estate I give and dispose thereof as follows viz I give and bequeath the use of all my household goods furniture plate linen and all other my personal estate stock in trade utensils ready money and securities for money after my debts and legacy of one hundred pounds and funeral and testamentary expenses are paid and satisfied unto my said loving wife Sarah for and during the term of her natural life I mean that she shall enjoy the use of my household goods furniture plate linen and all other things that are and shall be in and about my dwelling house yard or backside garden or other the premises now in my occupation for and during her life as aforesaid and likewise receive the interest of my money and securities for money as it shall become but for and during her natural life and from and after her decease I give and bequeath all my said household goods furniture plate linen moneys

and securities for money and the principal sums hereby termed unto my said son William Leach his executors or administrators with power by his last Will and Testament or otherwise to give and dispose thereof subject nevertheless and without prejudice to the interest which my said wife Sarah hath therein during her natural life by the above mentioned bequest and I do hereby make ordain constitute and appoint them the said Sarah Leach my wife and William Leach my son executrix and executor of this my last Will and Testament hereby revoking countermanding and making void all former wills by me at any time heretofore made In witness whereof I have to this my last Will and Testament contained in --- [blank on original] sheets of paper set my hand and seal as follows that is to say my hand to each of the preceding sheets near the bottom and to this last sheet my hand and seal as also my seal to the thread which fastens the sheets together this fifth day of April one thousand seven hundred and sixty

**William Leach**

Signed sealed published and declared by the said William Leach the testator as and for his last Will and Testament in the presence of us who have subscribed our names as witness hereto at the request and in the presence of the testator

Nathl **Griffin**

Samuel **Bennet**

Bry. **Richards**

This will was proved at London before the right worshipful Sir Edward **Simpson** knight doctor of laws master keeper or commissioner of the prerogative court of Canterbury lawfully constituted on the sixteenth day of July in the year of our Lord one thousand seven hundred and sixty two by the oaths of Sarah Leach widow the relict and William Leach the son of the deceased and executors named in the aid will to whom administration was granted of all and singular the goods chattels and credits of the deceased having been first sworn by commission duly to administer

# From Somerset to Berkshire

*Daphne Spurling*

I was very interested in Kerr Kirkwood's talk at the **Reading Branch Meeting** in September, which was based on the diary of a farmer who had moved from the west country to Berkshire a 100 years ago, because my mother's family had followed a similar route. I have often wondered why they moved to Berkshire and how they knew of a farm to rent. So far as I know they had no previous connection with this part of the country.

Luckily my great grandmother lived until 1927 full of stories of the family which were recorded by her grandson's wife in 1932. My great grandfather, Henry **Shorney**, had taken over her parents' farm at Crowcombe in the vale of Taunton in 1862. With the agricultural depression following the repeal of the Corn Laws, this was not a good time to be farming. As the family history records:

*"A great calamity befell the Henry Shorneys with the occurrence of liver fluke (called coad in Somerset). Henry lost a flock of sheep three consecutive years in a row: 1879, 1880 and 1881. When Edgar was only 12 he skinned 40 sheep in one month. These were dark days with very heavy monetary losses. The boys all worked very hard – too hard for their tender ages -- as their father was in ill health and deeply depressed by the ill-fortune that seemed to dog him."*

In 1883, they gave up this farm which had been in the family for 60 years and started 10 years of wandering between rented farms with 6 children from 8 to 19 years. The first move was just 6 miles to another farm nearer Taunton. The prospects were so dark in 1884 that their eldest son went to America after disagreeing with his father over modern machinery.

The family then made the giant leap from Somerset to Raghill Farm in Berkshire. (The

family history doesn't give any more detail and the only Raghill Farm that I have found is near Aldermaston.) After 3 years they moved again to White Place Farm where they were very happy being just 2 miles from markets for cream, butter and poultry at Maidenhead and Cookham. But the Cliveden Estate was sold to the Astors who wanted White Place as their home farm. The next move was to Ewelme Park a farm in the Chilterns overlooking the village. Having walked along the flint strewn ridgeway which runs through farm, we are not surprised that they found the farming there too expensive. So three years later they moved again finally settling at Langley Hill Farm straddling the Bath Road in Calcot about 1894. Henry's son Edgar, my grandfather's brother, who had borne the brunt of his father's problems farmed there until the 1920s.

The striking aspect of this story is the insecurity. Can you imagine the upheaval of moving the growing family, all their belongings and the family business? I am amazed that some large pieces of furniture from the old house in Somerset remain in the family today. In addition, they had the worry of adjusting to each new farm: 5 in an 11 year period. The loss of the family farm in Crowcombe had a lasting effect on my grandfather who was only 8 years old at the time. I remember him 70 years later throwing the Manchester Guardian across the room as he held the free trade policies of the liberals partly responsible. Although he spent most of his working life in Reading or Lincoln, he returned to Somerset in retirement. But after only 9 years, an accident to my grandmother meant a move back to Lincoln to be near a daughter.

# The Dedication of Caversham War Memorial for WW2

*Marilyn Wooldridge (née Edwards)*

Having been involved when the Berkshire War Memorial project was first started back in the 1980s and in which the names of Caversham First World War dead are recorded I was interested in the dedication of the Second World War Memorial on 23rd April 2005.

When I first heard about the re-dedication of the memorial I contacted Mrs Pauline Palmer of the Caversham British Legion to have my

uncle's name added. Douglas Christopher Edwards (Royal Artillery) was a well known Caversham businessman.

Despite a very wet day the dedication was very well attended and reported in the Reading Chronicle by Steve Still and can be found by searching for "Caversham War Memorial" at <[icberkshire.icnetwork.co.uk](http://icberkshire.icnetwork.co.uk)>

The following names were added to the war memorial:

## **Forces Dead**

Agnew K.C.	Clarke P.J.	Greenaway A.J.	Mansell E.W.	AFC
Allwright A.G.	Coffee D.	Groves B.G.	Marshall W.C.	Tanner F.
Amor J.T.	Constable A.	Grubb J.C.	May A.F.	Tyner W.C.
Annell F.W.	Cooke W.A.	Haines W.R.	Meehan T.J.B.	Vincent W.L.
Arslett F.J.	Crawley F.	Hastings V.	Meredith A.	Walter L.W.
Avard Hayward P.	Davall E.F.	Hayward V.C.D.	Moss H.B.K.	Warwick D.
Baker G.B.M.	Davidson C.	Heather E.J.H.	Nell B.W.	Warwick G.G.
Balcombe G.W.	Deacon G.	Heckman E.P.H.	Noon R.	Wayman F.S.
Bale L.A.	De-Gruchy J.F.V.	Hewlett M.H.	O'Driscoll W.	Webb F.J.
Ballard H.L.P.	Diplock E.J.	Higgs W.J.	Oldland F.L.	Weller R.F.C.
Barratt G.B.	Dixon J.N.	Hills A.A.	Panting H.E.R.	Wheeler A.E.
Bateman K.A.	Donald G.S.	Hodges R.A.	Parsons W.T.	Wheeler N.H.
Beckett R.S.	Druce G.H.D.	House L.G.	Peet J.D.O.	Wheeler S.H.
Besley C.R.I. MBI MC	Dunn D.F.	Hulse R.G.	Perren D.F.	White F.W.
Bonnar M.	Dunser F.C.	Hunt P.	Pilley C.W.F.	Willies S.H.
Booth A.	Edwards D.C.	Hyland B.P.M.	Pinnock L.J.	Willett H.B.
Boumphrey E.H.	Elford P.R.R.	Impey R.K.	Pratt C.H.	Willett L.I.A.
Bradford W.L.	England P.	Jones P.N.	Price M.	Williams H.J.
Briant G.	Fagg A.F.	Kent C.	Purnell K.J.	Wilson J.R.
Bruhl L.R.B.	Farthing G.J.S.	Lane K.N.	Rhatigan D.P.F.	Witchelo W.H.
Bryant G.F.	Faulkner F.H.	Lane P.J.	Rogers A.G.	Wyatt P.H.
Bucksey V.R.	Fletcher F.J.	Lanning F.J.	Ruck G.	<b>Civilian Dead</b>
Bunney A.R.B.	Ford A.A.	Lewingdon C.J.	Rudd C.E.	Fontes L.G.
Busby W.G.	Fowler T.E.	Little G.	Shepherd P.W.	Hickey W.E.
Buswell P.E.V.	Fuller L.W.	Lovergrove P.C.	Sherwood H.G.	Jackson H.J.
Butler L.R.	Gaze F.E.	Lunn K.	Skinner B.G.	Nunn G.
Cambridge W.P.	Germain R.W.	Mace S.A.	Smith S.P.	Puleston J.M.
Carter J.P.	Godwin R.W.H.	Mackay F.M.	Snow W.J.	Sikes H.L. CBE
Christopher T.W.	Goodchild M.H.	Mackenzie K.	Streamer C.	Temple W.H.J.
	MM	Mackintosh A.D.	Strong E.H.	Thackeray M.J.
	Grant E.J.	Mahoney D.M.	Sword J.A. DFC	Waldeck E.G.

READING & DISTRICT CIGARETTE CARD & POSTCARD CLUB  
**GIANT POSTCARD & CIGARETTE CARD FAIR**

**Sunday, July 2nd, 2006.**

**at RIVERMEAD LEISURE CENTRE**  
**RICHFIELD AVENUE, READING, RG1 8EQ**

*1 Mile walk or taxi from Reading Railway Station. Or if using M4, exit at Junction 11, follow signs to Town Centre, but then continue towards Caversham and the Rivermead Leisure Centre.*

**90 Dealers, 155 Tables**

*The dealers will have for sale tens of thousands of topographical postcards from 1900 onwards, showing churches, buildings, street scenes in towns and villages throughout the UK., and Social History cards, and many other themes  
There will also be masses of cigarette cards as well, if you are a collector.*

**A wonderful way to enhance interest in your own Family History !**

**IF YOU HAVE NEVER BEEN TO A BIG POSTCARD FAIR BEFORE,  
PLEASE COME ALONG, IT IS AN AMAZING REVELATION !!**

**Admission : 10.00 am – 4.30 pm. £1.00      Ample car parking**

**For further details ring The Club Secretary on 0118-9784499**

The No.1 Supplier to Genealogists for Microfiche Readers

## ***Why You Need A Microfiche Reader***

Contrary to popular belief, not all information is available on CD.

There is a vast amount of research and records that are only available on microfiche. The information on a microfiche compliments that on a CD.

A microfiche is often cheaper than a CD. Microfiches are available to search small areas of information whereas a CD you have to search a huge complicated database.

Most microfiches are copies of the original documents. You can check what the original documents actually showed – very useful in the case of name changes, spelling mistakes or not clearly written details. Microfiche readers are small and compact, user friendly – switch on, insert the microfiche and you are on your way.



**M.W.MICROFILM SUPPLIES, 18 Watling Place, Houghton Regis, Dunstable, LU5 5DP**  
**www.mw-microfilm.co.uk. E-mail: Margaret@mw-microfilm.co.uk. Tel/Fax 01582 867045**

# Gleanings from exchange magazines

*Daphne Spurling*

## **Somerset and Dorset FHS 30th**

**Anniversary Edition.** A page for each year lists and summarises the main articles, describes places, lists names, and gives tantalising extracts. Many names included. [*The Greenwood Tree*, Vol 30, No 4, Nov 2005]

## **My Parish - Churchill**

[*Bristol & Avon FHS*, No 122, Dec 2005]

**Theberton.** A very comprehensive account of the village including names from Muster Roll 1638, Poll Books of 1710 and 1790, and directories of 1844 and 1874. [*Suffolk FHS*, Vol 31m No 3, Dec 2004]

**The Old Days in Heanor.** Memories of the village at the turn of the 20th century. [*Derbyshire FHS*, Issue 115, Dec 2005]

**Nineteenth Century Local Directories** - A Key Source [*Shropshire FHS*, Vol 26, Part 4, Dec 2005]

## **Oral History for Family Historians.**

Covers all aspects including some websites. [*Sheffield and District FHS*, Vol 26, No 4]

**St Mark's Church, Cheetham.** Index of over 1000 surnames from Monumental Inscriptions from over 1500 graves recorded up to around 1880. [*Manchester Genealogist*, Vol 41, No 4, 2005]

## **Microfilmed Newspapers in Manchester Archives and Local**

**Studies.** Mainly northern papers with dates covered. [*Manchester Genealogist*, Vol 41, No 4, 2005]

## **Craftons and Caldwelles**

Article traces one male line down from William Crafton of Basildon born 1510 [*Quaker Connections*, No 34, March 2005]

## **My Ancestor was a Bastard**

[*Cleveland FHS*, Vol 9, No 9, Jan 2006]

## **Bastardy and Baby Farming in Victorian England**

[*Cleveland FHS*, Vol 9, No 9, Jan 2006]

## **Know Your Parish - Stockton-On-Tees**

[*Cleveland FHS*, Vol 9, No 9, Jan 2006]

## **Researching at the Museum of Rural**

**Life** [MERL] [*Oxfordshire FHS*, Vol 19, No 3, Dec 2005]

**The Vaccination Act of 1898.** Lists over 200 children of Devizes who were exempted from vaccinated in 12 month period from 12 October 1898. Exemptions to 6 June 1900 have been transcribed. [*Wilts FHS*, Oct 2005]

**Coroners' Inquests.** Two page article under Recent Meetings [*Folkstone and District FHS*, Vol 19, No 2, Dec 2005]

## **Digital Camera Eclipses Traditional Black and White Microfilm**

**Performance.** Digital photos of registers are more legible than B&W fiche. [*Kent FHS*, Vol 11, No 5, Dec 2005]

**Surrey Entries in the Male Servants Tax 1780.** [*West Surrey FHS*, Vol 32, No 2, Sep 2005 et seq]

## **West Surrey Parish Profile - Wonersh**

[*West Surrey FHS*, Vol 32, No 3, Dec 2005]

Send your letters or articles: by email to [Editor@berksfhs.org.uk](mailto:Editor@berksfhs.org.uk) or The Editor, Berkshire Family History Society, Yeomanry House, 131 Castle Hill, Reading, RG1 7TJ

### **Winson and Munday Family Bible**

*Mrs Rosamund Du Cane, Forest Cottage, Pilley Bailey, Nr Lymington, SO41 5QT*

I recently picked up an old family Bible at a sale of second-hand books, on the flyleaf of which are a number of entries of births and deaths of the families of **Winson** between 1877 and 1901 and of **Munday** between 1889 and 1950. Both families appear to have lived at Clewer and Windsor. There are some more recent entries, the latest is 1976, but these are in the names of **Adams, McCleery, McIntosh, Brimsden** and **Misson**, mostly from Hastings. I imagine, however, that these people are descendants of the earlier Winsons and Mundays. The two earliest Winson entries are of Calstock in Somerset [sic] and Bagshot in Surrey.

I should like to return this Bible to a member of the family that owned it. If any member has established a descent from this family I would be happy to send them the Bible, in return for the cost of postage.

### **Ancestors of William Canfield**

*Penny Mann, 4 Waddington Avenue, Old Coulsdon, Surrey CR5 1QE*

I am trying to trace the baptism and parents of William **Canfield** born about 1763. He married Bet **Belcher Penstone** in Stanford-in-the-Vale on 4th October 1790 when he was described as a bachelor of Shrivenham. The couple lived in Shrivenham and had nine children named Ann, Elizabeth, William, John, Henry, George, Maria, Mary and Sarah. Of the sons, Henry became a butcher at Kempford, Gloucestershire and George became an innkeeper of 'The Barrington Arms' and 'The Victoria Tavern' in Shrivenham. William died in Shrivenham in August 1815 aged 52 and in his will he was described as a butcher and linen draper. Any information on this Canfield would also be welcome.

### **Hannah Povey marries John Quarterman of Egham 1785**

*Mrs Jean Nixon Skinner, "Harddfán", 7 Heol-Y-Nant, Llandow Village, Nr. Cowbridge, Vale of Glamorgan, Wales, CF71 7PE*

I was reading in the *Berkshire Family Historian*, on the web site, two letters back in March and June of 2002, from Mr G.M. **Povey**, and Pauline **Houldley** about their ancestor Hannah Povey.

I have a Hannah Povey in my tree, she was married December 1785, to John Quarterman of Egham, and died 10 years later in July 1796 after having seven children.

### **Calling Titchener researchers**

*Samantha Ranger, 32 Almswood Road Tadley, Hants, RG26 4QG  
e-mail: <[samantha.ranger@tesco.net](mailto:samantha.ranger@tesco.net)>*

Calling all Titchener researchers. I am also trying to trace the descendants from my Gt,Gt Grandparents Alfred George Titchener and his wife Mary Jane **Bizzell**, known as George & Jane. Alfred was born in Bourton and moved to Bradfield along with his parents George and Susannah (**May**) about 1870/1880.

They had 8 Children: Frederick George died as an infant; Albert Victor killed in WW1; Ruth no marriage found yet; Elizabeth married Jim **Povey**; Gerald Gordon married Phylis **Tyrell**; Dorothy married George **Young**; Sidney Joseph Bizzell married Ivy?; William Alfred Charles married Rose Ellen **Brunsdon**.

I am looking at organising a get together in the spring or early summer to meet, share research, stories and laughter!! Please let me know if you are interested.

***'Is this photograph yours?'***

*Ivan & June Dickason (0118) 978 6785 or e-mail  
<ivan@dickason.co.uk>*

This photograph was left in a book borrowed from the Reading Branch Lending Library. The photograph is of the type known, we believe, as a 'tintype.' It dates from 1875 and is about 50mm by 80mm. A note on the reverse refers to Thomas and Joseph Grimble (?)



We would like to return the photograph to its rightful owner. If it is yours, please contact us.

[Editor's note: the original dark photograph has been lightened to make the detail clearer.]

***Maidenhead,  
Cookham and Bray***

*Daphne Spurling*

My thanks to Valerie Storie who saved me an afternoon of frustration by pointing out that "Cookham" in the 1891 census extended down to the A4 in Maidenhead. I had found my family in three houses in Cookham in the 1891 census. My great grandparents (William and Hannah **Chapman**) were at 2 Church Villas. Their daughter (my grandmother, Lilian) was at Alexandra House, a girls' school run by her cousin (Arabella **Hinton**) while another cousin (Annie **Inglis**, née Hinton) was the headmaster's wife at a boys' school called Ingleside. On a previous visit to the village, my husband and I had already tentatively identified my great-grandparents' house in a terraced row lying between Cookham church and the Thames. A return visit to locate the schools was planned for the week after Valerie started the correspondence on the BFHS Discussion Forum. We would have been on a wild goose chase.

Mea culpa. The initial finding had been at the end of a long day and I hadn't noticed that the name of the parish was St Luke's and not the Holy Trinity of present day Cookham. Once Valerie had directed me to Maidenhead, and using the details on the census page, it was easy to find the location of the houses – except that Market Street where the girls' school was located has been largely obliterated by a roundabout and supermarket.

Members' interests

Compiled by Bob Plumridge  
members-interests@berksfhs.org.uk

Members submitting their interests:

- 1028 **Mrs J Vinall**  
Kynance Cottage St John's Road  
Mortimer Reading Berks RG7 3TR
- 1860 **Mrs P Ford**  
1 Clifton Lane Thorpe Constantine  
Tamworth Staffordshire B79 0LJ
- 2812 **Mrs E Adams**  
22 Floriston Gardens Ashley New Milton  
Hampshire BH25 5DL
- 5002 **Mrs J Johnson-Rissi**  
11 Neason Court Neason Way Folkstone  
Kent CT19 6DZ
- 5193 **Mr L Whittinger**  
Dar-As-Salaam Horley Road Charlwood  
Surrey RH6 0BJ
- 5623 **Mrs MC Popkin**  
2332 Suffolk Crescent Courtenay British  
Columbia V9N 9H5 CANADA
- 5823 **Mr CJ Hunt**  
9 Amethyst Close Sleaford Lincolnshire  
NG34 7SL
- 5878 **Mrs K Lewis & Mrs P Jones**  
15 Beaumont Road Windsor Berks  
SL4 1HY
- 5879 **Mrs BJ Burns**  
20095 50A Avenue Langley British  
Columbia V3A 7H8 CANADA
- 5885 **Mrs S Davis**  
2 The Spinney Weycombe Road  
Haslemere Surrey GU27 1SP
- 5898 **Mrs W Conroy**  
4 Claremont Gardens Bridport Dorset  
DT6 3AX
- 5909 **Mrs M Bailey**  
17 Willow Chase Hazelmere Bucks  
HP15 7QP
- 5930 **Mrs HM Davis**  
Slade Farm Milcombe Nr Banbury Oxon  
OX15 4RR
- 5934 **Mr JL Berry**  
52 Mutton Lane Potters Bar Herts  
EN6 2NZ
- 5943 **Mrs P Rudd**  
3 Harvest Bank Road West Wickham  
Kent BR4 9DL

- 5945 **Mrs A Rawlinson**  
33 Bardfield Way Rayleigh Essex  
SS6 9HE
- 5954 **Mr R Wood**  
469 Reading Road Winnersh  
Wokingham Berks RG41 5HX
- 5968 **Mrs D Middlehurst**  
34 Budham Way Bracknell Berks  
RG12 7PE
- 6002 **Mr & Mrs B Burgess**  
23 Tithes Pit Shaw Lane Warlingham  
Surrey CR6 9AS

No	Name	Place	Code	Date
5823	ALLEN	Cold Ash	BRK	pre 1850
5823	ALLEN	Buckleberry	BRK	pre 1850
5823	ALLEN	Thatcham	BRK	pre 1850
5968	ALLUM	Caversham	OXF	1775-1817
5968	ALLUM	Wokingham	BRK	All
5968	ALLUM	Hurst	BRK	All
5968	ALLUM	Waltham St Lawrence	BRK	1742-1768
5968	ALLUM	Ealing	MDX	1843-1850
5968	ALLUM	Chelsea	MDX	1852-1881
5968	ALLUM	Kensington	MDX	1870-1897
5945	ARGAR	Elham	KEN	1700-1900
5885	ARKELL	Ham	WIL	1828+
1860	BARRASS	All	KEN	1900+
5193	BAVINGTON	Reading	BRK	pre 1700
5945	BELLINGHAM	Shipbourne	KEN	1700-1820
1028	BOSWELL	Garsington	OXF	1790-1930
5193	BRABINGTON	Central	BRK	pre 1800
5885	BRIGHT	Thatcham	BRK	1800+
5193	BROCKMAN	Central	BRK	pre 1800
2812	BROWNJOHN	Thatcham	BRK	1800-1900
2812	BROWNJOHN	Sydmonton	HAM	1800-1900
6002	BURGESS	Abingdon	BRK	1750-1850
6002	BURGESS	Sutton Courtney	BRK	1750-1850
5193	CANNON	Hampstead Marshall	BRK	pre 1750
5193	CANNONS	Thatcham	BRK	pre 1750
5945	CASTELL	Brightwell	BRK	All
5945	CASTELL	Wallingford	BRK	1870+
5934	CHESTERMAN	Farnam	SRY	1828-1840
5823	CLARK	Thatcham	BRK	pre 1847
5945	COLLINS	Chilton	BRK	pre 1800
5898	CONROY	Clewer	BRK	1800-
5943	COPE	Westminster	MDX	1750-1850
5002	CORBETT	St Martin in the Fields	MDX	1846
5943	CORNISH	Lambeth	KEN	1750-1850
5909	COX	Compton	BRK	1700-1800
5623	CROCKER	All	ESS	1700-1900



5623 CROCKER	All	DEV	1700-1900	5930 HOLDFORTH	Clerkenwell	LDN	1820+
5623 CROCKER	All	YKS	1700-1900	5930 HOLDFORTH	All	BRK	1820+
5954 CROUCH	Binfield	BRK	1800-1900	5945 HOTTER	East Hendred	BRK	pre 1780
5945 DARBY	Tooting Graveney			5002 HUMBELS	Leighton Buzzard		
		SRY	1750-1850			BDF	1892-1912
5823 DAY	Silchester	BRK	pre 1810	5823 HUNT	Mattingley	HAM	pre 1817
5943 DAY	Lambourn	BRK	1750-1850	1028 HUNT	Bridgwater	SOM	1830-1850
5823 DEARLOVE	Reading	BRK	pre 1818	5193 JACYES	Henwyck	BRK	pre 1800
5943 DIXON	Lambourn	BRK	1750-1850	5002 JOHNSON	Upton Green	BRK	1800-1900
5945 DOLTON	Whitchurch	HAM	All	5002 JOHNSON	Reading & Area		
5878 DONOVAN	Cork	IRL	1780-1840			BRK	1800-1900
5878 DONOVAN	Ratcliff	MDX	1850-1870	5002 KAYE	Leighton Buzzard		
5823 DORMER	Caversham	OXF	pre 1828			BDF	1912
5878 DOWLAND	Binfield	BRK	1800-1850	5002 KAYE	Sheffield & Area		
5878 DOWLING	Binfield	BRK	1800-1850			YKS	1800-1900
5878 DOWLING	Uxbridge	MDX	1860-1910	5909 KING	Warbington	HAM	1700-1800
5878 DOWLING	Harlington	MDX	1800-1860	5934 KNIGHT	All	BRK	pre 1840
5623 DRAKELY	All	ESS	1800-2000	5885 LAWRENCE	Thatcham	BRK	1840-1895
5623 DRAKELY	All	KEN	1800-2000	5193 LEACH	Hampstead Marshall		
5623 DRAKELY	Wolverhampton					BRK	pre 1730
		STS	1800-2000	5909 MEAKIN	Newbury	BRK	1800-1850
5878 DUDLEY	Bedford	BDF	1800-1860	5885 MERRITT	Faringdon	BRK	1750+
5002 EADON	St Paul, Strand	MDX	1800-1846	5885 MILLIN	Burford	BRK	1840+
5930 EAST	Bray	BRK	1800+	5823 MONGER	Shinfield	BRK	pre 1815
5885 EASTMAN	Newbury	BRK	1820+	5943 MOODY	Ireland	DUB	1750-1875
5945 ELLAWAY	East Hendred	BRK	All	5954 MUNN	Tenterden	KEN	1780-1810
5885 FISHER	Wallingford	BRK	1892+	5930 NEW	Islington	LDN	1861+
5885 FISHER	Greenford Green			5930 NEW	St Pancras	LDN	1871+
		MDX	1860+	5930 NEW	Clerkenwell	LDN	1851+
5885 FISHER	Faringdon	BRK	1760+	5930 NEW	Holborn	LDN	1838+
1028 FLAY	Calne	WIL	1790-1870	5930 NEW	Maidenhead	BRK	pre 1837
1028 FLAY	Reading	BRK	1870-1910	5930 NEW	All	BRK	pre 1837
5823 FORTESCUE	Hawley	HAM	pre 1858	5930 NEW	Hayes	MDX	1891+
5002 FRANKLIN	Wandsworth & St Martin			5909 PALMER	East Ilsley	BRK	1788-1831
		MDX	1800-1875	5909 PALMER	East Garston	BRK	1700-1800
5885 FRENCH	Thatcham	BRK	1799+	5909 PALMER	Welford	BRK	1830-1880
5968 FULLER	Englefield	BRK	1693-1743	5909 PALMER	Lamborne	BRK	1700-1800
5968 GARDINER	Tilehurst	BRK	1747-1779	5823 PATEY	Whitley	BRK	pre 1819
5945 GILHAM	Elham	KEN	All	5623 POPKIN	All	ESS	1700-2000
5968 GOMM	Sherston Magna			5623 POPKIN	Bethnal Green	LDN	1700-2000
		WIL	1814-1880	5623 POPKIN	West Ham	LDN	1700-2000
5968 GOMM	Hurst	BRK	1770-1814	5623 POPKIN	Stepney	LDN	1700-2000
5943 GOODWIN	All	RUT	1750-1850	5909 POTTINGER	Compton	BRK	1500-1800
5943 GOSWELL	Hackney	MDX	1750-1850	5909 PUNT	All	BRK	All
5909 GRAY	Newbury	BRK	1800-1900	5193 QUARRIER	Thatcham	BRK	pre 1800
5945 GREGORY	North Moreton			5909 QUELCH	East Garston	BRK	1700-1800
		BRK	pre 1740	5968 RANCE	Hurst	BRK	1750-1770
5823 GROVER	Reading	BRK	pre 1831	5823 RICHARDSON	Hawley/Yateley		
5823 HAMBLIN	Thatcham	BRK	pre 1847			HAM	pre 1825
5193 HAMLIN	Central & Reading			5623 RIPPINGALE	All	LDN	1700-2000
		BRK	pre 1800	5623 RIPPINGALE	Gestingthorpe	ESS	1700-2000
5943 HARDIMAN	Stow on Wold	GLS	1800-1875	5943 RUDD	Lambeth	KEN	All
5823 HAWKINS	Hawley/Yateley			5002 SHEPPAND	Reading & Area		
		HAM	pre 1825			BRK	1800-1900
5898 HAWTHORNE	Sunninghill	BRK	1800-	5878 SHIP	Reading	BRK	1780-1850
5885 HAYWARD	Hannington	WIL	1814+	5623 SHORT	All	YKS	1900-2000
5909 HEAD	Reading	BRK	1700-1800	5623 SHORT	All	ESS	1900-2000

Members' interests

5623 SHORT	Bishops Nympton			5823 TIBBLE	Reading	BRK	pre 1831
		DEV	1700-1900	5945 TOLFREE	Whitchurch	HAM	All
5909 SIMS	All	BRK	All	1028 VINALL	Boreham Street		
5945 SKINNER	West Malling	KEN	1700-1900			SSX	1790-1850
5623 SLARK	East Ham	ESS	1890-2005	1028 VINALL	London	MDX	1810-1920
5623 SLARK	Battersea	SRY	1800-1900	5885 VINER	Hungerford	BRK	1828+
5623 SLARK	West Ham	ESS	1890-2005	5823 WALLIN	Buckleberry	BRK	pre 1850
5623 SLARK	Hackney	LDN	1800-1900	5943 WALLIS	Lambeth	KEN	1750-1850
5623 SLARK	Mary le Strand	LDN	1800-1900	5945 WEBB	Hawkinge	KEN	All
5623 SLARK	Windsor	BRK	1780-1920	5943 WELLS	Westminster	MDX	1750-1850
5623 SLARK	Hackney	MDX	1800-1900	5193 WEST	Reading	BRK	pre 1700
5945 SMITH	Upton cum Chalvey			5945 WEST	East Hendred	BRK	pre 1820
		BKM	pre 1780	5909 WHIT	All	BRK	All
5968 SMITH	Bradfield	BRK	1700-1723	5954 WILES	Sittingbourne	KEN	1770-1810
5002 SMITH	Wandsworth at the Plain			1028 WILLIAMS	Abingdon	OXF	1790-1910
		SRY	1844	5909 WITHERS	Lamborne	BRK	1700-1800
5968 SMITH	Englefield	BRK	1723-1747	5954 WOOD	Bermondsey	SRY	1780-1820
5879 SMITH George				5885 WOOD	Thatcham	BRK	1823-1865
	All	BRK	1841-1852	5943 WOODHAM	Southwark	SRY	All
5885 STEVENS	Sherborne	GLS	1840+				

**Sunesis Imaging** Old Photographs Beautifully Restored  
*Fair prices for the best work.*




Unsurpassed QUALITY & CARE.  
 Friendly people you can talk to & TRUST!  
 Digital artistry with forensic skill.  
 Specialists in the hardest problems.  
 Ambrotypes, Tintypes, Cartes, Prints, Negs etc.  
 Originals unaltered.

Call Stuart or Alison for a brochure, advice,  
 or a free quote. 01494 511247.



[www.sunesis-imaging.com](http://www.sunesis-imaging.com)  
 email: [stuart@sunesis-imaging.com](mailto:stuart@sunesis-imaging.com)  
 58 Coningsby Road, High Wycombe, Bucks, HP13 5NZ.



**MARATHON**

**New and Refurbished Fiche Readers and Printers at Reasonable Prices**

**Lamps and Spares for most Machines**

**Master Fiche/Films and Diazo Copies Produced**  
**CD-R Mastering and Duplication**

Marathon Microfilming Ltd  
 27-29 St Marys Place, Kingsway  
 Southampton SO14 3HY  
 Tel 023 8022 0481 Fax 023 8023 0452  
[www.marathon-microfilm-cdrom.co.uk](http://www.marathon-microfilm-cdrom.co.uk)  
[sales@marathon-microfilm-cdrom.co.uk](mailto:sales@marathon-microfilm-cdrom.co.uk)

***Family of Benjamin Weston of Newbury (1777-1848).***

I am tracing the family of my 2 x gt. grandfather, Benjamin Weston, innkeeper of The Waggon and Horses in Newbury Market Place, and Treasurer of the Newbury Borough Council until his suicide in 1848.

Toomer's 1815 census of Newbury lists a daughter Ann aged 9. Another daughter, Eliza Phoebe, was baptised at Newbury on 4 April 1813. On 14 September 1828, Ann married John **Ilsey** by licence at Tilehurst. A daughter Sophia Amy was baptised at Newbury on 12.6.1833.

The 1851 census shows John Ilsey at White Horse [Hart — according to Berks FHS transcription] Inn, Newbury Market Place, but married to Ann's younger sister Eliza. To find out who was the mother of the children born later than 1833, I need to know when Ann died, and when John Ilsey married the younger sister. I shall be most grateful for help.

Please contact:

Rev. Philip Wall, 9 Woburn Close,  
TROWBRIDGE, Wiltshire, BA14 9TJ

Tel: 01225 754323 email:

<[philip.wall2@btopenworld.com](mailto:philip.wall2@btopenworld.com)>

**The Patterson Heritage**

by

*I. G. Patterson-O'Regan*

The book will be the starting point for all who are interested in knowing the country and origin of the name; those interested in family history and particularly for families researching the name of Patterson and its derivatives! It has been 11 years in the making! If you have a link to this name or curiosity prompts you to want to know more about the history of this name, then this book is for you!

Make cheques payable to I.G. Patterson-O'Regan for 12.95 + 2.75 p&p = £15.70 sterling and send to: Mrs. I. G. Patterson-O'Regan, Pembroke Lodge, 4 Station Approach, Birchington-on-Sea, Kent. CT7 9RD.

ISBN No. 0 9528030 1 1

©2005 I. G. Patterson-O'Regan

**SOLO**  
Mailing Services Ltd

If a mailing house with a proven track record and an attitude that puts the customer first is important to you, come and talk to the people who listen and work to your schedule.

For the last four years we have offered the BFHS the very same guarantee enjoyed by all of our customers...



[www.solo-uk.com](http://www.solo-uk.com)

**0118 941 0101**



## BFHS Research Centre

The Research Centre contains almost all the published 1851 census indexes of England and Wales a fully fitted computer suite including the 1881 census of the United Kingdom, Vital Records Indexes, CD ROMs as well as many other county indexes. We also have continuous access to the Internet with the Ancestry Library edition giving access to English and Welsh census returns between 1851 and 1901 and thousands of books, fiche and transcripts. Your Research Centre supplements the Berkshire Record Office and the Berkshire local studies libraries; you will also find much information about other counties in England and Wales, Scotland, the Channel Islands, the Isle of Man and many overseas countries.

### *How to find us*

Next door to the Berkshire Record Office, off Coley Avenue, close to the centre of Reading. Good parking, 15 minutes' walk from the main railway station, with buses passing close by. Follow the signs to the Berkshire Record Office.

### *Address*

BFHS Research Centre, Yeomanry House,  
131 Castle Hill, Reading, Berkshire RG1 7TJ.  
Telephone 0118 950 9553

## Research Centre and Reference Library tours

The tours scheduled for the next few months are:

- Monday 15th May 7.30pm–9.30pm
- Saturday 16th Sep 2.30pm–4.30pm
- Monday 20th Nov 7.30pm–9.30pm

Whether you are a member or just a visitor, these tours will show you what research and finding aids are available to enable you to make the most of the rich resources at the Research Centre.

### *Opening hours:*

- Tuesday, Wednesday and Thursday from 10am to 4pm
- Late opening on Tuesday from 7pm to 9.30pm with computer help
- Second and fourth Sunday of each month from 11am to 4pm
- Second Sunday of every month 2pm to 4pm computer help is also available

### *Special theme days for local visitors*

These are busy days with local press coverage.

- Sunday 26th Mar 11am to 4pm  
North of England
- Tuesday 9th May 10am to 9.30pm  
South East England

**Full details are available on our website:**

**<[www.berksfhs.org.uk](http://www.berksfhs.org.uk)>**

## Birth Briefs Index

Birth Briefs are five-generation ancestral charts submitted by members of the Society. Fully completed charts contain the names and vital records (birth or christening, marriage and death or burial) of the member and up to 30 ancestors.

- You can search the index, currently 28,595 names, on the website or for £2 per surname by post.
- You can order a copy of a particular Birth Brief for £2. Quote the ID No. obtained from the website or from the postal search. The Birth Brief can be sent as a hard copy, in PAF Pedigree format or as a file in GEDCOM format.

Please post search requests and orders for copies to BFHS (BB), Yeomanry House, 131 Castle Hill, Reading RG1 7TJ. Mark your envelope BB and include the BB ID No. (if known). Enclose a sterling cheque, drawn on a UK bank, your email address and an A4 self-addressed envelope either stamped or containing two IRCs.

- You can contact the person submitting the Birth Brief, if they are still a member (see website). We will pass on a letter or email (if they have an email address – see website).

To contact the person submitting the Birth Brief: either send your letter with two unstamped envelopes, one self-addressed and one blank, with three IRCs (not stamps) to BFHS (BBxxxx) at Yeomanry House.

Or email your message to [BBxxxx@berksfhs.org.uk](mailto:BBxxxx@berksfhs.org.uk) (where xxxx is the BB ID No).



Research Centre and Berkshire  
Record Office

## Berkshire Name Search

Berkshire Name Search consists of the following censuses and indexes:

*1851 Census.* Complete checked transcription of the 173,748 persons within Berkshire on 30 March 1851. Printouts are available for a surname search (listing all and giving district) on either the page or the household of a selected person. Also available on CD ROM.

*1861 Census.* Most individuals have been transcribed. Reading is the major omission – soon to be remedied.

*1871 Census.* Transcription and index of 230,000 people now completed; checking ongoing and will be included as available. Printouts as 1851.

*1881 Census.* Complete transcription and index of 223,936 people.

*Berkshire Marriage Index.* Work in progress transcribing and checking pre-1837 registers. Includes 127,336 entries to date, see the *Berkshire Family Historian* or the Society website for the parishes and dates covered. Printouts of early entries only give dates and names of bride and groom; later entries included if from another parish or by licence.

*Berkshire Burial Index.* Work continues transcribing from burial registers, with over 420,000 entries to date. See the Society website or the *Berkshire Family Historian* for up-to-date contents. Some 50% of entries show all available data; the rest show – where available – name, age, abode, relationship, occupation and title together with a note indicating if there is further information such as date, place or cause of death etc. in the original record. An updated version of the index is available on CD.

*Berkshire Strays Index.* This dataset includes 12,000 people recorded in events taking place outside Berkshire if the person has given some reference to Berkshire. Strays records come from a variety of sources including the 1851 census of several neighbouring counties.

*Berkshire Miscellaneous Index.* This dataset is based on the former Berkshire Name Index and

includes 100,279 records that were extracted and submitted by individuals. When possible running sets (such as baptisms from a parish register) will be placed in specialist datasets leaving the disparate individual records and small datasets in this Miscellaneous Index. The amount of information available depends on the record.

*Berkshire Name Index.* This is the master index for all of the above indexes.

To search the Berkshire Name Index you may:

- do your own search at the Research Centre
- visit a BFHS stand at a family history fair
- request a postal search.

## Postal Search

Send your request to Berkshire Name Search, BFHS (BNS), Yeomanry House, 131 Castle Hill, Reading RG1 7TJ enclosing a cheque for the charge together with your email address or an A4 sized stamped self-addressed envelope and two IRCs.

## Charges

- To search the Berkshire Name Index send £2 per surname requested to obtain the number of entries in each census or index. This search will not provide any information from the records.
- To obtain the full details from the records printed on an A4 sheet (up to 25 entries or lines). We will advise the additional cost if more entries are found.
  - £2 per surname per requested database
  - £5 per surname to search all databases currently available (price will increase as more databases are included).

## Records wanted

If you have records of any names that would fit into our Miscellaneous Index (event occurs within Berkshire) or Strays Index (event occurs outside Berkshire but person has Berkshire connections) please send them by post or email to:

- MiscIndex@berksfhs.org.uk, or Strays@berksfhs.org.uk
- BFHS, Yeomanry House, 131 Castle Hill, Reading RG1 7TJ labelling the envelope either BFHS (MiscIndex) or BFHS (Strays).

### Raymond's Original Pollbooks

Thousands of names! Were your ancestors amongst them? These facsimiles of rare pollbooks and electoral registers list voters at Parliamentary elections in the eighteenth and nineteenth centuries. They are invaluable sources for tracing the distribution of family names over wide areas. Volumes currently available are:

London 1768	£14.50	Suffolk 1710	£14.25
Westminster 1774	£19.00	Suffolk 1790	£14.50
Westminster 1818	£23.50	Yorkshire 1741	£24.00
Westminster 1841	£19.00	Yorkshire 1807	£25.00
Norfolk 1768	£18.50	W Riding	£24.50
Norfolk 1806	£17.50	Hull	£6.50
Norfolk 1817	£18.00		
Somerset (Electoral registers)			
East 1832	£19.00		
West 1832	£19.00		

**S A & M J Raymond**

**PO Box 35, Exeter EX1 3YZ**

**Tel: (01392) 252193 email: samjraymond@bopenworld.com**

**REME**  
www.rememuseum.org.uk

## Museum of Technology

Museum of the

Corps of Royal Electrical and Mechanical Engineers

Isaac Newton Road Arborfield Berkshire RG2 9NJ

Admission: Child £2 , Adult £3,  
Family £8 (2 adults and up to 3 children, under 5s go free)  
OAP and Concessions £2.50

Opening times: Mon - Thu - 09.30 to 16.30  
Fri 09.30 to 16.00 Sun 11.00 to 16.00

Archives: Open by appointment.  
Guided access £10 per day and research available at £10 per hour.

Booking & information Tel. 0118 9763375  
email: enquiries@rememuseum.org.uk

# Berks FHS Books

## Mail Order Booklist

The Society Bookshop is a service provided by Berkshire Family History Enterprises Ltd, a wholly owned subsidiary of the Berkshire Family History Society. This list is a selection of the many books available from our Bookshop. A complete and up-to-date list can be found on our website at <www.berksfhs.org.uk/berksfhsbooks> or by writing to Mail Order at BFHS, Yeomanry House, Reading, RG1 7TJ

The web site also provides an online ordering facility for many publications allowing the use of both debit and credit cards. A small 'shipping' charge is applied to debit and credit card orders to cover the additional costs involved. We regret debit and credit cards are only accepted for online orders and not for postal orders.

Berkshire books (or near Berkshire)	UK	Abroad
Around <b>Abingdon</b> (Archive Photograph Series)	£11.15	£12.05
<b>Ascot</b> - Cheapside in the Forest of Windsor	£14.95	£16.15
Around <b>Ascot</b> , Reg Morris	£13.15	£14.05
<b>Aldermaston</b> : Memories of an English Country Village	£20.00	£21.00
<b>Barkham</b> - A History, D. French & J. Firth	£8.85	£9.80
A Short History of <b>Bear Wood</b> and <b>Sindlesham</b> , J. Bell	£3.90	£4.20
<b>Bearwood</b> - St Catherine's Church - Par Mag Extracts	£3.90	£4.20
The History of Beech Hill Baptist Church	£2.70	£3.35
<b>Benson</b> - A Century of Change, Janet Burtt etc	£14.95	£15.90
<b>Benson</b> - A Village Through its History, Kate Tiller	£13.80	£15.00
<b>Berkshire</b> Militia Men enrolled 1807 & 1808	£3.15	£3.40
<b>Berkshire</b> Poll Book 1727, Eureka	£5.35	£5.90
<b>Bradfield</b> Union Workhouse Births and Deaths, Eureka	£3.00	£3.40
<b>Brightwalton</b> , A Downland Village, J Osment etc	£8.70	£9.35
<b>Brimpton</b> Story	£9.30	£10.25
A Walk around <b>Charvil</b> , Bill Crane	£3.00	£3.40
<b>Chilton</b> : Up in the Downs, Frank Dumbleton	£11.35	£12.30
Change at <b>Cholsey</b> - Again!, Judy & Stuart Dewey	£14.55	£15.70
The Story of <b>Compton</b> - A Berkshire Downland Village	£12.80	£14.00
<b>Cookham</b> (Archive Photograph Series)	£10.70	£11.35
<b>Cookham</b> Union Workhouse Births and Deaths	£2.65	£3.00
<b>Didcot</b> - A Poor Struggling Little Town, Brian Lingham	£9.80	£11.00
<b>Didcot</b> - The Long Years of Obscurity to 1841, Lingham	£11.80	£13.00
<b>Didcot</b> - Wills & Inventories Vol. 1 - 1530-1851	£9.80	£11.00
Around <b>Didcot</b> & the <b>Hagbournes</b> , Brian Lingham	£9.15	£10.05
People of <b>Didcot</b> , Kenneth Caulkett	£10.95	£11.85
<b>Earley</b> St Peter's C of E School, Watts et al	£3.90	£4.20
<b>Easthampstead</b> Union Workhouse Births and Deaths	£3.00	£3.40
<b>East Ilsley</b> - Photographic Memories 1900-1970	£11.45	£12.50
'Time Gentleman Please', 300 years of Public Houses in <b>East</b> and <b>West Ilsley</b> , Suzanna G. Burnay	£8.75	£9.40

<b>East Garston</b> - Past & Present	£15.05	£16.20
Past and Present <b>Emmer Green</b> (2nd edition)	£11.50	£12.55
<b>Enborne</b> - Narrowing the Field	£1.90	£2.20
<b>Enstone</b> : Lifting the latch - A life on the land	£10.30	£11.30
<b>Eton</b> Union Workhouse Births, Eureka	£3.00	£3.40
<b>Eton</b> Union Workhouse Deaths, Eureka	£4.10	£4.65
A Photographic History of <b>Eton Wick</b>	£11.70	£12.70
The Story of a Villlage <b>Eton Wick</b> 1217-1977,	£6.10	£6.65
<b>Faringdon, Witney, Woodstock &amp; Chipping Norton</b> - Marriage Notices, Eureka	£1.90	£2.20
Changing Faces of <b>Faringdon</b> - Book 1	£11.10	£12.05
Changing Faces of <b>Faringdon</b> - Books 2 & 3. each	£9.80	£10.55
<b>Finchampstead</b> in old pictures	£5.75	£6.40
<b>Ginge to Lockinge</b> - Historical Walk, John Brooks	£2.90	£3.30
The First 150 years of <b>Goring</b> School	£11.30	£12.30
<b>Hagbourne</b> : Diary of a Village School, M Lawson	£10.50	£11.55
Windsor Hakebourne - A story of <b>West Hagbourne</b>	£12.15	£13.10
<b>Henley</b> Rural - History of a Rural District Concl Around <b>Henley on Thames</b> , Sian Ellis	£10.85	£11.60
	£9.10	£10.05
<b>Henley, Wallingford &amp; Wokingham</b> Mar Notices,	£2.40	£2.70
The Parish of <b>Hinton Waldrist</b> , Peter Keene	£3.45	£3.90
<b>Hungerford</b> - A Pictorial History, Dr Hugh Pihlens	£16.00	£17.20
A History of <b>Hungerford</b> , Bailey et al	£6.80	£7.55
Reminiscences of 20th century <b>Hungerford</b>	£4.50	£4.90
<b>Hungerford</b> Union Workhouse Births & Deaths	£3.50	£3.90
The Five Villages of <b>Hurley</b> , Hurley Parish Council	£23.50	£24.50
<b>Hurst</b> , 19th Century St Nicholas Church, Jim Bell	£3.90	£4.20
<b>Kennet &amp; Avon Canal</b> , Clive & Helen Hackford	£11.95	£12.85
<b>Kingston Bagpuize</b> with <b>Southmoor</b> , Keen & Kelly	£3.45	£3.90
<b>Kintbury</b> - A Century Remembered 1900-1999	£7.45	£8.35
<b>Longworth</b> - A sense of place, Peter Keene	£3.45	£3.90
Around <b>Maidenhead</b> in Old Photographs	£8.95	£9.85
<b>Maidenhead</b> Cong. Church: Bap., Mar. & Bur., Eureka	£3.80	£4.10
A Photographic Record of <b>Newbury</b> , Sue Hopson	£11.45	£12.50
<b>Newbury</b> in the 1950s, Tony Higgott	£8.80	£9.55
<b>Newbury</b> Weekly News Personal Announcements, Andrew Punshon BMDs 1877-1886 (CD)	£12.50	£13.95
BMDs 1887-1896 (CD)	£16.50	£17.95
BMDs 1897-1906 (CD)	£15.35	£16.40
The Story of <b>Newbury</b> , Tony Higgott	£11.10	£12.05
<b>Newbury</b> Union Workhouse Births & Deaths	£4.00	£4.40
<b>Oxford</b> Canal - The Boat people, Eureka	£3.15	£3.55
<b>Oxfordshire</b> Airfields in the Second World War	£14.70	£15.70
<b>Pamber</b> Heath History, Raymond West	£14.50	£15.70
<b>Purley on Thames</b> at the Millenium, John Chapman	£3.50	£3.90
<b>Reading</b> - A Pictorial History, Stuart Hylton	£16.00	£17.20
<b>Reading</b> - The Story of Reading, Daphne Phillips	£11.30	£12.25
<b>Reading</b> - The Top of Whitley, Daphne Barnes-Phillips	£10.10	£11.05
<b>Reading</b> , The History of Christ Church CE Primary Sc	£5.60	£6.15
<b>Reading</b> School - The first 800 years	£11.30	£12.30

The Town of <b>Reading</b> and its Abbey, Cecil Slade	£11.30	£12.25	<b>Wokingham &amp; Bracknell</b> - Frith's Photo Memories	£10.95	£11.85
<b>Reading's</b> Forgotten Children - 1871-1902, R. S. Bray	£6.75	£7.35	A Thousand Years of <b>Windsor</b>	£7.50	£8.55
<b>Reading:</b> Battle Workhouse & Hospital 1867-2005		enquire	<b>Windsor</b> Union Workhouse Deaths, Eureka	£3.40	£3.70
The Stranger in <b>Reading</b> , pub. 1810 now annotated	£14.00	£15.20	<b>Berkshire Overseers' Papers (pre-1834)</b>		
<b>Reading</b> Borough Police Register 1865-1880	£4.00	£4.65	Berkshire Overseers' Papers on CD		
<b>Reading</b> Borough Police Register 1881-1904	£4.00	£4.65	(complete with master index)	£18.00	£19.45
<b>Reading</b> Reg. Dist. Marriage Notices 1837-1848	£3.00	£3.40	Microfiche arranged by Poor Law Unions but pre-1834		
<b>Reading</b> Broad St. Cong. Church Bap., Mar. & Bur.	£3.60	£4.15	Vol 1 Newbury: Chieveley	£3.40	£4.40
<b>Reading</b> & Dist. Congregationalists - Bap., Mar. & Bur.	£3.00	£3.40	Vol 2 Newbury: Brimpton, Enborne, Wasing, Woolhampton	£3.40	£4.40
The People of <b>Rotherfield Greys</b> vol 1	£3.15	£3.55	Vol 3 Newbury: Thatcham	£4.35	£5.40
The People of <b>Rotherfield Greys</b> vol 2 & 3: each	£3.00	£3.40	Vol 4 Bradfield: Aldermaston, Englefield, Pangbourne	£3.40	£4.40
<b>Sandhurst &amp; Crowthorne:</b> Public houses 1740-1950	£4.00	£4.45	Vol 5 Bradfield: Abbots & Bannister, Bucklebury, Burghfield, Stanford Dingley, Sulham, Sulhamstead, Theale		sold out
<b>Sandhurst</b> in the Second World War	£6.85	£7.60	Vol 6 Bradfield: Tilehurst, Padworth	£4.35	£5.40
<b>Sandhurst</b> – a look back in time	£5.00	£5.45	Vol 7 Maidenhead: Bray, Cookham, Waltham St Lawrence	£3.40	£4.40
<b>Shinfield:</b> a walk around our village	£5.50	£5.95	Vol 8 Faringdon: Ashbury, Coleshill, Great Coxwell, Kingston Lisle, Longworth, Shellingford, Stanford in the Vale, Uffington		sold out
<b>Shinfield</b> , Those were the days! George & Eileen Taylor	£3.00	£3.40	Vol 9 Wallingford: Brightwell, Crowmarsh Gifford, Newnham Murren, Wallingford St Mary & St Peter Long Wittenham	£3.40	£4.40
Tudor and Stuart <b>Shrivenham</b> , Dils and Schwartz	£7.45	£8.35	Vol 10 Easthampstead: Easthampstead, Warfield, Winkfield	£4.35	£5.40
<b>Shrivenham</b> - Portraits of a Typically English Village	£11.50	£12.55	Vol 11 Wokingham (part of): Shinfield, Sonning, Swallowfield, Wokingham-	£3.40	£4.40
<b>Slough</b> - A Century of Change	£10.95	£11.85	Vol 12 Wokingham & Windsor: Finchampstead, Hurst, Sunninghill, Old Windsor		sold out
<b>Sonning</b> , <b>Eye &amp; Dunsden</b> Two Centuries of Change	£11.50	£12.55	Vol 13 Wantage: Blewbury, Brightwell, Hampstead Norris, W Hanney, Harwell, W Hendred, Peasemore, Sparsholt, & part of Wantage	£4.35	£5.40
The Book of <b>Sonning</b> , Angela Perkins	£18.55	£19.70	Vol 14 Wantage: remainder	£4.35	£5.40
A Hundred years of <b>South Moreton</b> School	£4.45	£4.85	Vol 15 Abingdon: Abingdon, Cumnor, Drayton, Kingston Bagpuize, Sutton Courtenay	£3.40	£4.40
<b>Spencers Wood</b> - Our Village	£5.60	£6.15	Vol 16 Reading (part of): St Giles	£4.35	£5.40
The Bobby's Notebook - On the beat in early Victorian			Vol 17 Reading (part of): St Giles	£4.35	£5.40
<b>Sunninghill</b> , C. Weightman	£5.50	£5.95	Vol 18 Reading (part of): St Giles	£4.35	£5.40
Around <b>Tadley</b> - Fact and Fable	£9.35	£10.30	Vol 19 Reading (part of): St Giles	£4.35	£5.40
Around <b>Tadley</b> - People and Places	£10.35	£11.30	Vol 20 Reading (part of): St Mary	£4.35	£5.40
<b>Tadley</b> - During my Time and Before, E W Kimber	£1.90	£2.20	Vol 21 Reading (remainder of): St Mary	£4.35	£5.40
<b>Thames Valley</b> Airfields in the Second World War	£14.70	£15.70	Vol 22 Reading: Caversham	£4.35	£5.40
<b>Thames Valley</b> Papists, Tony Hadland	£7.15	£8.70	Vol 23 Hungerford: Kintbury & part of Hungerford	£4.35	£5.40
<b>Theale</b> War Memorial - The stories, Theale LHG	£5.25	£5.90	Vol 24 Hungerford:(part of): Hungerford	£3.40	£4.40
<b>Theale</b> Community Quilt 2000	£4.00	£4.45	Vol 25 Hungerford:(remainder of): Hungerford	£3.40	£4.40
A History of <b>Tilehurst</b> Methodist Church	£8.45	£9.35	Vol 26 Newbury: Newbury	£4.35	£5.40
More of the <b>Tilehurst</b> we remember	£6.75	£7.35	<b>Old Ordnance Survey Maps</b>		
<b>Twyford</b> - A Village Post Office, John and Sheila Rudd	£3.00	£3.40	<b>BerksFHS - Berkshire Maps</b> (CD)		
<b>Twyford</b> - St Mary the Virgin Parish Register Extracts	£4.00	£4.45	The Ordnance Survey first edition 1881-87		
<b>Twyford</b> - Old Inns & Alehouses, John and Sheila Rudd	£1.75	£2.15	51 maps included , scale 6 inch to the mile		
<b>Twyford &amp; Ruscombe</b> Village Walks	£3.50	£3.90	£10.50	£11.95	
<b>Twyford's</b> Railway Heritage, Marion & John Pearse	£3.25	£3.65			
Rural life in the Vale of the <b>White Horse</b> 1780-1914	£9.10	£10.05			
<b>Wallingford</b> - 1155 & All That!, J & S Dewey	£5.55	£6.10			
Window on <b>Wallingford</b> 1837-1914, J & S Dewey et al	£19.25	£20.10			
<b>Wallingford</b> - For Your Tomorrow (Military)	£17.15	£18.70			
<b>Wallingford</b> and the Civil War, J & S Dewey	£3.15	£3.45			
Around <b>Wallingford</b> , David Beasley	£10.95	£11.85			
<b>Wantage</b> 1550-1650, 1. Schooling	£1.90	£2.20			
<b>Wantage</b> - Images of England	£10.95	£11.85			
The Book of <b>Wargrave</b> (History & Reminiscences)	£12.05	£13.45			
The Second Book of <b>Wargrave</b>	£19.65	£20.60			
The History of <b>West Woodhay</b> with <b>Enstone</b> ,					
<b>Hamstead Marshall, Inkpen &amp; Combe</b>	£3.50	£3.90			
<b>White Waltham</b> - A Village at War	£7.00	£7.45			
<b>Wilts &amp; Berks</b> Canal	£10.95	£11.85			
<b>Wokingham</b> - The Town of My Life, Ken Goatley	£8.85	£9.60			
The <b>Wokingham</b> Agricultural Association 1835-1985	£20.65	£21.85			



### Godfrey Edition Reprints

Eton and Eton Wick 1899	£2.50	£2.80
Henley on Thames North 1910	£2.50	£2.80
Henley on Thames South 1910	£2.50	£2.80
Maidenhead Bridge and Taplow	£2.50	£2.80
Maidenhead 1897	£2.50	£2.80
Marlow 1897	£2.50	£2.80
Mid Berkshire 1885	£2.50	£2.80
Newbury 1898	£2.50	£2.80
Oxford 1898	£2.50	£2.80
Pangbourne & Whitchurch 1910	£2.50	£2.80
Reading 1898	£2.50	£2.80
Slough 1897	£2.50	£2.80
South Chilterns 1886	£2.50	£2.80
South Oxford 1898	£2.50	£2.80
South West Berkshire 1889	£2.50	£2.80
Vale of the White Horse 1893	£2.50	£2.80
Windsor 1897	£2.50	£2.80
Windsor Castle & Datchet 1897	£2.50	£2.80
Windsor Fort & District 1887	£2.50	£2.80
Wokingham 1909	£2.50	£2.80

### Berkshire Burial Index

Berkshire Burial Index 4th Edition (CD)	£15.50	£16.95
The CD must be returned to update from a earlier edition .		
Update from 3rd edition	£4.50	£5.95
Update from 2nd edition	£8.50	£9.95

### Berkshire Parish Registers (inc. some parishes in Oxfordshire)

Abingdon Reg. District - Volume 1 (CD)*: <i>Abingdon St Helens, Abingdon St Michael (Bap &amp; Mar only), Abingdon Workhouse (Bap only), Abingdon St Nicholas, Culham, Milton (Berks), Sandford on Thames, Shippon</i>	£17.50	£17.50
Abingdon Reg. District - Volume 2 (CD)*: <i>Appleford, Appleton, Binsey, Drayton (Berks), Drayton St Leonard, Frilford &amp; Longworth Mission, Fyfield, Kingston Bagpuize, Lyford, Marsh Baldon, North Hinksey, Nuneham Courtney, South Hinksey</i>	£17.50	£17.50
Abingdon Reg. District - Volume 3 (CD)*: <i>Besselsleigh, Cumnor, Marcham, Radley, Stadhampton, Steventon, Sunningwell, Sutton Courtney, Tubney, Uffington Wooton (Berks), Wytham</i>	£17.50	£17.50
Barkham St James 1538–1998 (CD)	£5.50	£6.95
Barkham St James 1538–1998 (fiche)	£5.35	£6.40
Burghfield St Mary 1559–1987 (CD)	£7.50	£8.95
Burghfield St Mary 1559–1987 (fiche)	£7.35	£8.40
Clewer St Andrew 1607–1860 (CD)	£8.50	£9.95
Clewer St Andrew 1607–1860 (fiche)	£8.10	£9.15
Combe St Swithin 1560–1985 (CD)	£3.50	£4.95
Combe St Swithin 1560–1985 (fiche)	£3.40	£4.40
Compton Parva 1553–1955 (CD)	£5.50	£6.95

Compton Parva 1553–1955 (fiche)	£5.35	£6.40
East Ilsley, St Mary's 1608-2003 (CD)	£5.35	£6.40
East Lockinge, All Saints 1546-1897 (CD)	£4.50	£5.95
Faringdon Reg. District - Volume 1 (CD)*: <i>Ashbury, Baulking, Bourton, Charney Bassett. Compton Beauchamp, Fernham, Hatford, Kingston Lisle, Little Faringdon, Pusey, Shellingford, Stanford in the Vale, Watchfield, Woolstone</i>	£17.50	£17.50
Faringdon Reg. District - Volume 2 (CD)*: <i>Coleshill, Eaton Hastings, Faringdon Prim Meth, Faringdon Workhouse, Faringdon Bastardy Orders, Kelmescott, Langford, Little Coxwell, Littleworth, Longcot, Longworth</i>	£17.50	£17.50
Peasmore, St Barnabas 1538-1991 (fiche)	£4.35	£5.40
Reading St Laurence – Baptisms 1813-1888 (fiche)	£4.35	£5.40
South Oxfordshire Area - Volume 1 (CD)*: <i>Caversham: St Peter, St Andrew, St Bartholomew, St John, Goring, Goring Heath, Sonning, Whitchurch</i>	£17.50	£17.50
Sparsholt, Holy Cross 1558-1972 (CD)	£6.50	£7.95
Swallowfield, All Saints 1539-1962 (CD)	£7.50	£8.95
Theale, Holy Trinity 1832-1968 (CD)	£4.50	£5.95
Theale, Holy Trinity 1832-1968 (fiche)	£4.35	£5.40
Tilehurst, St Michael 1559-1991 (CD)	£10.00	£11.45
Wallingford Reg. District - Volume 1 (CD)*: <i>Brightwell, Cholsey, Long Wittenham, North Moreton, Sotwell, Wallingford: St Leonard, St Mary, St Peter, Baptist Chapel, Independent &amp; Primitive Methodist Churches</i>	£17.50	£17.50
Wallingford Reg. District - Volume 2 (CD)*: <i>Aston Tirrold, Aston Tirrold URC (Bap &amp; Bur only), Aston Upthorpe, Benson, Crowmarsh Gifford, Didcot, Dorchester, Hagbourne, Mongewell, Moulsford, South Moreton</i>	£17.50	£17.50
Wantage Reg. District - Volume 1 (CD)*: <i>Wantage (inc. Union Workhouse), Chilton, Grove, Letcombe Bassett, Letcombe Regis</i>	£17.50	£17.50
West Ilsley, All Saints 1558-1967 (CD)	£4.50	£5.95
West Ilsley, All Saints 1558-1967 (fiche)	£4.35	£5.40

Items marked \* have been produced and are priced by Oxfordshire FHS

### Berkshire Census (inc. some parts of Oxon)

Full 1851 transcript with name index (CD)	£23.10	£24.10
Microfiche transcripts with a name index are available for some Enumeration Districts. Printed booklets of the surname are still available for a few districts.		
Full 1881 transcript with name index (CD)	£15.50	£16.95
Toomer's 1815 Census of Newbury (CD)	£7.50	£8.95
1841 Transcript and indexes (fiche)*		
Moreton and Wantage Hundreds	£9.00	£9.00
Faringdon	£9.00	£9.00
Shrivenham & Ganfield Hundreds	£9.00	£9.00
Oxford City (inc. Grandpont & Oxford Aldates)	£9.00	£9.00
Abingdon	£9.00	£9.00

Ock & Horner Hundreds	£9.00	£9.00
North Berkshire inc Oxfordshire (CD)*		
1861 (except Woodstock sub-district)	£17.50	£17.50
1871	£17.50	£17.50
1891	£17.50	£17.50

Microfiche indexes are also available for Abingdon, Faringdon, Henley (including Rememham), Oxford City, Wallingford & Wantage for census years 1861, 1871 & 1891

Items marked \* have been produced and are priced by Oxfordshire FHS

### Berkshire War Memorials

Transcriptions and indexes (fiche)

Berkshire War Memorials (Part 1):

*Villages, towns and parish churches 1838–1982* £9.85 £10.90

Berkshire War Memorials (Part 2):

*Military Units 1854–1991* £4.35 £5.40

### Berkshire monumental inscriptions

Aldermaston 1553-2002 (CD) £3.50 £4.95

Knowl Hill (CD) £3.50 £4.95

Other Berkshire monumental inscriptions are available on microfiche or CD for many churchyards and cemeteries. A complete list together with prices can be obtained from the Society website on <[www.berksfhs.org.uk/berksfhsbooks](http://www.berksfhs.org.uk/berksfhsbooks)> or by contacting our Bookshop at Yeomanry House, Reading, RG1 7TJ.

### Other Items

National Burial Index 2nd Edition on 4 CDs £46.30 £47.30

Electoral Roll for Berkshire 1832 CD £4.50 £5.95

Snare's Post Office Directory of Reading 1842-3 CD £8.10 £9.35

Secretary Hand ABC Book, Alf Ison £4.45 £5.90

Many other books including items from the Federation of Family History Societies and the Society of Genealogists are available via the Society web site.

### Vouchers for use on the Internet

Vouchers for the 1901 census at <[www.1901census.nationalarchives.gov.uk](http://www.1901census.nationalarchives.gov.uk)> and for Family History online at <[www.familyhistoryonline.net](http://www.familyhistoryonline.net)> may also be ordered from the Bookshop in £5.00 and £10.00 denominations. Please add 50p (UK) or £1.30 (overseas air mail) p&p when ordering alone.

### Placing orders

Orders may be placed on our website or by mail to The Bookshop, Yeomanry House, 131 Castle Hill, Reading RG1 7TJ. Cheques should be made payable to BerksFHSBooks in sterling. Those overseas now find it most cost-effective to buy online and our facility to handle dollar cheques is being discontinued.

Books are priced to be sent by surface mail. For air mail prices, please check the web site [www.berksfhs.org.uk](http://www.berksfhs.org.uk) or by post at the above address. Fiche, CDs and computer diskettes are priced to be sent by air mail to all destinations outside the UK unless the order also includes books in which case they will also be sent surface mail. Allow four weeks for UK and overseas air mail to twelve weeks for overseas surface mail for delivery.

### Terms and Conditions of Sale

Customers have the right to cancel an order for goods within seven working days of receipt of the goods. The seven day 'cooling off' period excludes Saturdays, Sundays and Bank Holidays. Notification of intention to cancel must be received by the Society, in writing, within the cooling off period. A telephone call is not acceptable. Either send a letter to BerksFHS Bookshop, Yeomanry House, 131 Castle Hill, Reading, Berkshire RG1 7TJ or by email to [Bookshop@Berksfhs.org.uk](mailto:Bookshop@Berksfhs.org.uk).

On receipt of your notice the Society will refund the retail sale price of the goods if they are returned in a re-saleable condition. The goods are to be cared for by the customer at the customer's risk. The cost of returning the goods must be paid for by the customer. The Society will make payment of a refund within 30 days of receipt of the returned goods. Refunds will be made by sterling cheque. No refunds will be made in respect of CD's where the customer has broken the seal or wrapper. If the Society has been asked to supply a service, for a fee, then once the request and fee for the service has been received by the Society, it will begin the process and no cooling off period shall apply, with the consequence that no refund of fee shall be made even if the customer wishes to stop the service. The law of England shall apply to this contract.

BerksFHS Books is the trading name of Berkshire Family History Enterprises Ltd. Company No. 4733795 England, Registered Office: Yeomanry House, 131 Castle Hill, Reading, RG1 7TJ Berkshire Family History Enterprises Ltd is a wholly owned subsidiary of Berkshire Family History Society (Registered Charity No. 283010).



Pictured at the 30th anniversary conference (L to R) Sandra Grist, Hilary Roberts and Jacky Holcombe who deal with your orders and keep the Bookshop stocked

# Programme Calendar 2006

## **Bracknell and Wokingham Branch**

*Priestwood Community Centre, Priestwood Court Road, Bracknell, 7.15pm for 7.45pm*

- 20 Jan **Members' Evening.** *By the Members for the Members*  
*This features three short talks on topics of general interest, a question and answer session and displays of family history items, ephemera and other curiosities.*
- 17 Feb **Reading, Riting and Reaping** *by Wendy Anderson*  
*More on the lives of our Ag Lab ancestors. In rural areas some children began work at four years of age. What happened to their education?*
- 17 Mar **Putting Your Name on the Map** *by Howard Benbrook*  
*Surname distributions stay surprisingly constant over long time periods. Analysing and mapping data sources can pinpoint surname origins and migration patterns. The programs Surname Atlas, GenMap UK and LDS Companion will be demonstrated.*
- 21 Apr **The History and Work of the Commonwealth War Graves Commission**  
*This meeting examines the work of the Commission and its database of those who gave their lives in two wars. The film "A Debt of Honour" will be shown, followed by Q&A.*
- 19 May **Agricultural Labourers**  
*Due to unforeseen circumstances an alternative speaker is being sought for this topic. Further information will appear on the web site when available.*

## **Computer Branch**

*The Oakwood Centre, Headley Road, Woodley, 7.15pm for 7.45pm*

- 18 Jan **Using [www.FamilyHistoryOnline.net](http://www.FamilyHistoryOnline.net)** *by Chad Hanna*  
*Guide to the web site by the programmer with tips to get the most results for the least cost. Nearly 14m burials, 10m census, 1881 census and now photographs.*
- 15 Feb **Introduction to Scanning** *by Kevin Cole*  
*Scanning slides and negatives, different scanner types, file formats, demo Adobe Photoshop Elements how to organise it all.*
- 15 Mar **The National Monuments Record (NMR)** *by Jane Golding*  
*Public Archive enabling searching of archaeological sites, historic & ordinary buildings, and historic images.*
- 19 Apr **Personal Ancestral File (PAF)** *by Les Binns*  
*Using Personal Ancestral File - it is both free and easy to use.*
- 17 May **Custodian 3** *by John Price*  
*Custodian is a database that could help you sort out your raw information before you link it into your family tree. Special data entry forms help you with each type of record.*

## **Newbury Branch**

*St Mary's Church Hall, Church Road, Shaw, Newbury, 7.30pm for 7.45pm*

- 8 Feb **The Internet for Family Historians** *by Jeanne Bunting*
- 8 Mar **Family History Resources in Newbury Museum** *by Jane Burrell*
- 12 Apr **The House of Toomer** *by Phil Wood*
- 10 May **A Nest of Hornecks** *by Moira Bonnington*  
*An entertaining tale of elopements, divorces and other dastardly deeds.*

# Programme Calendar 2006

## continued from overpage

### Reading Branch

*The Church of Jesus Christ of Latter-day Saints, 280 The Meadway, Tilehurst, Reading, 7.15pm for 7.45pm*

- 26 Jan **My Ancestors in the Royal Navy** by Paul Blake  
*Insight into the life of people serving in the Royal Navy.*
- 23 Feb **Back to Basics** by Barry & Carolyn Boulton  
*For beginners - things we should do when tracing our family history: for the experienced things we have forgotten about and don't do.*
- 30 Mar **They're Not There! Census Indexes** by Jeanne Bunting  
*Problems and solutions when people don't want to be found.*
- 27 Apr **Berks FHS Projects** by Daphne Spurling & Sue Cummings  
*Following the branch annual meeting, an update on projects being run by our Society.*
- 25 May **Film Archives for the Family Historian** by Kathy Chater  
*The gems to be found on film.*

### Vale of White Horse Branch

*Long Furlong Community Centre, Boulter Drive, Abingdon, 7.15pm for 7.30pm*

- 9 Jan **Workhouses** by Peter Higginbottom
- 13 Feb **Oxford Canal** by Mark Davies
- 13 Mar **Computers for Family Historians** by Chad Hanna
- 10 Apr **Annual Meeting and other entertainment**
- 8 May **Movement and Migration in the 1800s** by Jane Ferentzi-Sheppard

### Windsor, Slough and Maidenhead Branch

*Christ Church United Reformed Church, William Street, Windsor, 7.30pm for 7.45pm*

- 31 Jan **Not many people knew this — nor did I until recently**  
*Short talks by members about researching family histories and discoveries made.*
- 28 Feb **The Family Records Centre** by Audrey Collins  
*The inner secrets of the FRC. How to find the numerous records contained within its portals.*
- 28 Mar **British Library Newspapers at Colindale** by Stewart Gillies  
*Home to the national archives of British and overseas newspapers, magazines and periodicals.*
- 25 Apr **A nest of Hornecks** by Moira Bonnington  
*An entertaining tale of elopements, divorces and other dastardly deeds.*
- 30 May **Computer Family History Programs** — speaker to be confirmed  
*Comparing some of those available. Follows a short annual branch meeting.*