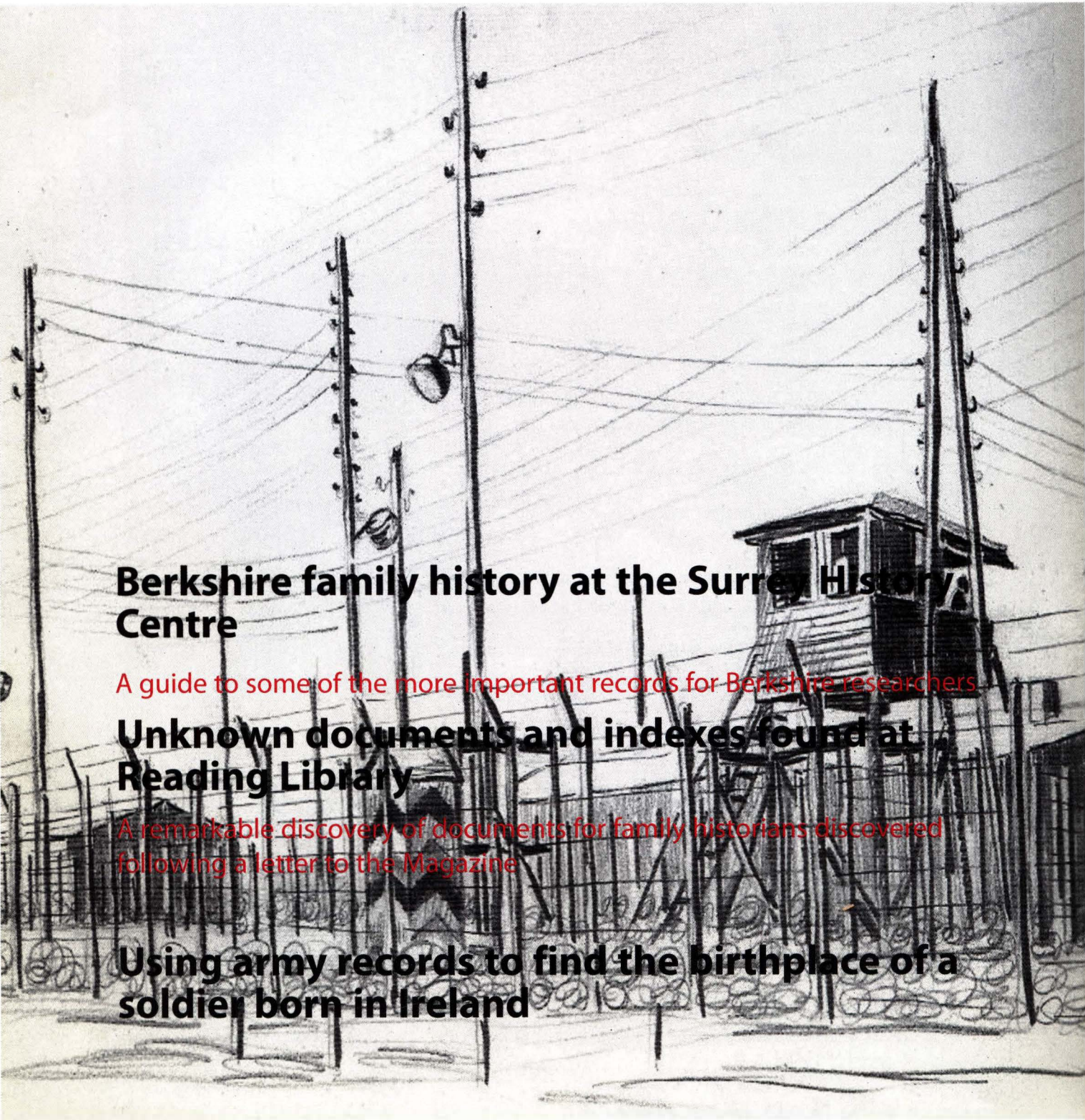




Berkshire Family Historian

March 2005 • volume 28

For Family Historians in the Royal County of Berkshire



Berkshire family history at the Surrey History Centre

A guide to some of the more important records for Berkshire researchers

Unknown documents and indexes found at Reading Library

A remarkable discovery of documents for family historians discovered following a letter to the Magazine

Using army records to find the birthplace of a soldier born in Ireland

Chairman

Chad Hanna
161 St Peters Road, Reading,
Berkshire RG6 1PG
Tel: 0118 966 3585
email: <chairman@berksfhs.org.uk>

Secretary/Editor

John Gurnett
5 Wren Close
Burghfield Common
Berkshire RG7 3PF
email: <editor@berksfhs.org.uk>

Treasurer

Ann Rutt
39 Oak Tree Road
Thatcham
Berkshire RG19 4QP
email: <treasurer@berksfhs.org.uk>

Membership Secretary

email: <memsec@berksfhs.org.uk>

Email discussion group and Webmaster

<joindiscussion@berksfhs.org.uk>
<webmaster@berksfhs.org.uk>

Projects Co-ordinator

Daphne Spurling
The Fifteenth, 7 Broadlands Close
Calcot Park, Reading
Berkshire RG31 7RP
email: <projects@berksfhs.org.uk>

Members' Interests

Email: <members-interests@berksfhs.org.uk>

Website

<www.berksfhs.org.uk/>

Branch Chairmen

Bracknell and Wokingham
Derek Trinder
58 Knox Green
Binfield,
Berkshire RG42 4NZ
Tel: 01344 457751

Computer

Peter Francis
5 Fuchsia Close
Calcot, Reading
Berkshire
RG31 4RH
Tel: 0118 901 0282

Newbury

Phil Wood
58 Hambridge Road
Newbury
Berkshire RG14 5TA
Tel: 01635 30857

Reading

John Price
The Ramblers, Kennylands Road
Sonning Common, Reading
Berkshire RG4 9JP
Tel: 0118 972 2210

Vale of White Horse

Jill Muir
10 Bellamy Close
Kingston Bagpuize with Southmoor, Abingdon
OX13 5AB
Tel: 01865 820493

Windsor, Slough and Maidenhead

Valerie Storie
15 Anthony Way
Cippenham, Slough
Berkshire SL1 5PG
Tel: 01628 605411

Other addresses

BFHS Research Centre
Yeomanry House, 131 Castle Hill,
Reading
Berkshire RG1 7TJ
Tel: 0118 950 9553

Berkshire Record Office

9 Coley Avenue
Reading
Berkshire RG1 6AF
Tel: 0118 901 5132

The illustration on the front cover is a drawing of the perimeter fence at Stalag Luft III.

Publishers: Berkshire Family History Society. Printers: Richfield Graphics Ltd, Richfield House, Unit 48 Paddock Road, Caversham, Reading RG4 5BY.

Registered Charity No. 283010.

In the event of non-delivery please return to John Gurnett, 5 Wren Close, Burghfield Common, Berkshire RG7 3PF.

© 2005. All articles in this magazine are copyright to the Society and to their contributors, unless otherwise stated, and may not be reproduced, stored in a retrieval system, or transmitted by any means without the prior permission in writing of the Berkshire Family History Society.

The opinions expressed in this magazine are those of the authors and do not necessarily reflect the opinions of the Editor or the Society. The inclusion of advertisements in this magazine does not imply any recommendation or otherwise by the Editor or the Society.

ISSN: 1468-1080

Berkshire Family Historian

For family historians in the Royal County of Berkshire
March 2005 Volume 28

Contents

News

02

Features

07 Have you visited the Surrey History Centre?

10 Treasure trove of documents and indexes found at Reading Library

13 It's a long way from Tipperary — a search for a great-great grandfather

15 Caldecott House, Abingdon

17 Q and A with Jean

Regulars

21 Gleanings from exchange magazines

22 Write now

24 Bookends

26 Members' Interests

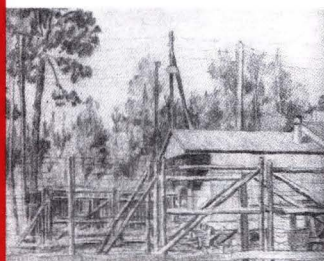
30 Back pages

32 Index

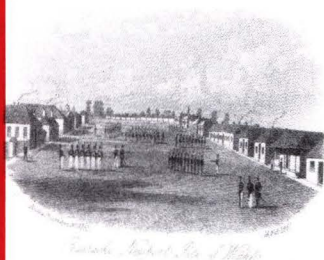
Inside back cover Branch programmes for Bracknell and Wokingham, Computer Branch and Newbury

Back cover Branch programmes for Reading, Vale of White Horse and Windsor, Slough and Maidenhead

3



13



15



22



Old Bailey trials

Another batch of Old Bailey trials has been added to Old Bailey Proceedings Online. These cover the period from January 1800 to October 1834, the last sessions before the court was renamed as the Central Criminal Court and its jurisdiction was changed. The website now covers the whole period from April 1674 to October 1834.

It is now possible to see place names in the Proceedings displayed on an eighteenth-century map of London. Links directly from trials from 1714 to 1759 take the user to an image from John Rocque's 1746 map of London with the location marked. The place search page has been modified to allow users to search for and display specific locations on the maps and to list all the trials in which that location features as a crime location or defendant residence. Further maps relating to late seventeenth and early eighteenth-century London, will be made available in the near future.

In addition two types of associated records, which provide valuable evidence about the crimes and accused criminals who were tried at the Old Bailey, have been added (both as searchable digitised texts and as page images) for the decade from 1746-1755. These are the manuscript sessions papers (which include witness and defendant statements made before the trial took place) and the Ordinary's Accounts (biographies of convicted felons compiled just before they were executed). These new documents are accessible directly from the trials to which they are related. It is now possible to search these documents separately from a new Ordinary's Accounts and Manuscript Sessions Papers Keyword search page and from the Browse by Date search pages for the 1740s and 1750s.

For further information go to <www.oldbaileyonline.org/about/#whatsnew>.

Migration records and memories

A new migration website, organised by The National Archives, plans to explore, record and illustrate why people came to England over the last 200 years. The site mainly looks at the Caribbean, Irish, Jewish and South Asian communities but it is constantly growing and will soon involve other communities.

This website offers free access, for personal use, to online versions of original material related to migration, including photographs, personal papers, government documents, maps and art objects, as well as a collection of sound recordings and video clips. Access can be made through <www.movinghere.org.uk>.

In Brief

City of London Guildhall Library

Because of building works at The Guildhall, the Corporation of London Records Office (CLRO) is moving out of its current premises this year.

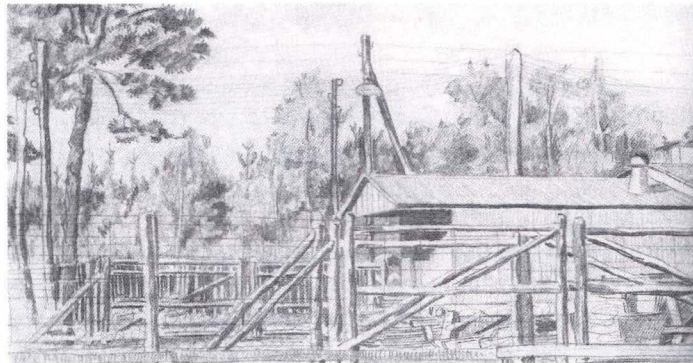
In order to safeguard the archives and to provide a full service the CLRO will be moving temporarily to the London Metropolitan Archives premises in Clerkenwell. The move is planned to take place in the period up to the end of June. During this period, you can still send in brief enquiries by post, email or fax. Corporation of London Joint Archive Service: London Metropolitan Archives, 40 Northampton Road, London EC1R 0HB. Tel: 020 7332 3820; Fax: 020 7833 9136; email: ask.lma@corpoflondon.gov.uk; website: <www.cityoflondon.gov.uk>.

Annual General Meeting notice

The Society Annual General Meeting, with annual reports from the Chairman and Treasurer, will be held at the Computer Branch meeting on June 15.

If you would like to nominate a member to the Executive Committee let the Secretary know by 1 May. Do ensure that the individual you nominate is prepared to sit on the Committee.

Second World War British PoWs



Main gate of
Stalag Luft III

Handwritten accounts of more than 80,000 prisoners of war are now available to researchers at The National Archives at Kew. The accounts given to British intelligence by individual servicemen after the war provide a unique insight into life in some of the infamous PoW camps. Some contain descriptions of torture, escape attempts and acts of sabotage. The papers which cover almost half of the 172,000 British servicemen who survived imprisonment, represent the most significant material relating to those who fought and survived the war and are particularly useful to those researching their family history. The amount of detail in the documents can vary enormously from accounts of daily life to just brief answers to the 20 basic questions asked by the interrogators. The documents are listed as WO 344.

First World War campaign medal records online

An early Christmas present from The National Archives was the news that five million medal records of servicemen and women who fought in the Great War were to go online. The medal index cards, held at The National Archives, Kew, provide the closest thing there is to a 'roll call' of all those who served in the army and Royal Flying Corps in the Great War, as every individual who served abroad in the army or Royal Flying Corps was entitled to one or more campaign medals.

People from all walks of life are represented: officers and soldiers, civilians whose jobs took them into the War, and thousands of people from Commonwealth countries. The archive can be found at <www.documentsonline.nationalarchives.gov.uk>.

In Brief

Death of former President

Lady Palmer, wife of a former Lord Lieutenant of Berkshire died last July. Her husband, Sir Gordon Palmer, had been President of the Berkshire Family History Society and became a regular visitor to our annual general meetings. When he died Lady Palmer agreed to continue her association with the Society. Lady Palmer was born Lorna Eveline Hope Bailie at Abingdon on 11 January 1925 and when she was nine her family moved to Scotland. During the war she joined the FANY and was stationed in the wireless telegraphy section of SOE at Bicester. With her husband, who eventually became managing director of Huntley & Palmers, she maintained a close connection to our fledging society and she resigned only when she felt that she could not give as much time to us as she would like.

Austin families convention

The Ausin Families Genealogical Society will celebrate its 26th anniversary from 16 to 18 September at Christ Church University College, Canterbury. There will be workshops and lectures and computer access to allow those interested in Austin research to compare notes.

Donations to the Research Centre Library

We are always pleased to have donations from members as additions to our Research Centre Reference Library. We cannot guarantee that they will be added to stock for several reasons:

- they may already be held in the library
- we may have a newer edition
- they may not be suitable for our purpose.

Having said that, we do like to be offered material for the UK and overseas. We are particularly looking for material that you have finished with, such as:

- parish registers (fiche or books)
- indexes, especially with names: passenger lists, criminal indexes, etc
- poll books
- census material.

We do hold the complete 1881 census, and most of the 1851 census, for the English counties, however our census coverage is far from complete.

In fact we should like anything that contains names for research purposes. We aim to have a good collection of material, Berkshire of course, and to broaden our coverage of other counties, as many of our members have interests in other areas.

CDROMs can present us with a problem if they are produced by commercial publishers, as these require us to have a licence, and it can be up to 10 times the cost of the disk. This is a surmountable problem which we can solve with the publisher. However, many family history societies now produce their own CDROMs and we can accept these.

You can check the catalogue yourself on our website to see what is already held. It is easy to access using the County codes, and the Google search engine. If you do make a donation, please do not forget to include your own name, membership number and address, and mark the item 'library donation'.

Thirtieth anniversary conference

This is just a reminder that the Society will be holding a one-day conference on Saturday 8 October 2005 to celebrate the thirtieth anniversary of the founding of the Berkshire Family History Society. The conference will be held at Theale Green Community School, just off Junction 12 on the M4, from 9.30am until 4.30pm. A number of sessions have been arranged, as well as exhibitors. The total cost, including food and refreshments is £20. An application form is enclosed with this magazine and early booking is necessary as we expect this special conference will be as popular as ever.

In Brief

Interests outside Berkshire

Following the success of the Special Research Days project at the Research Centre a new series has been booked for the Spring months. For those who have not already attended, one of these Tuesday research days they are devoted to giving advice and help to researchers with interests in areas other than Berkshire. They are held between 10am and 9.30pm.

- April 12: Counties of North East England
- May 10: Counties of North West England
- June 14: London/Middlesex
- July 12: Birmingham and the Midlands.

Visit the Research Centre at Yeomanry House and see just what we have to offer in expertise and material in the reference library, the computer suite and online.

Australian Congress on Genealogy and Heraldry

The Congress will be held in Darwin from 28 June to 2 July 2006. Although it is an early warning of this major Australian Congress, if you are planning a visit to Australia you may like to consider meeting many family historians down under.

Skeletons in the cupboard

Photographs and case details of prisoners, many of them child felons have been placed online by The National Archives. They date from 1872 to 1873. Each case gives the prisoner's physical description, as well as a photograph, their date and place of birth, the crime they committed, their sentence, the place of conviction and often their place of residence.

These records detail the horrors of the Victorian penal system and total more than 600 records of individual prisoners at Wandsworth Prison. The items stolen by the prisoners were often basic: tea, coffee, a piece of meat, a coat, a shawl, a pair of boots, but the sentences were harsh in today's terms. Children as young as 13 were whipped and sentenced to a month of hard labour for stealing a box of figs. See <www.documentsonline.nationalarchives.gov.uk> for an introduction to the site.

News from the Berkshire Record Office

The Record Office has recently adjusted its delivery service for original documents to the searchroom. Whereas before documents were produced at set times during the day, they are now aiming to produce them as soon as possible after they are ordered. This should mean that visitors need worry less about watching the clock when making requests.

The Record Office has also begun to sell a basic range of snacks at very competitive prices. Visitors previously had to cross Castle Hill to get to the nearest shop if they were peckish. At the moment items on sale are biscuits, chocolate and crisps.

Lastly the Office has begun to host introductory visits to the searchroom. The visits are open to all, and consist of a brief introduction to using the room, with a tour around its main contents and an opportunity to practice using microfiche. The plan is to hold these quarterly on a Monday afternoon, depending on demand. The next one is scheduled for 11 April.

Surrey and Middlesex manorial documents online

Surrey and Middlesex sections of the Manorial Documents Register can now be searched online. The Manorial Documents Register is a finding aid that describes all known surviving manorial records and provides details of where they can be consulted. Only the Manorial Documents Register brings all this information together in one place.

Manorial records provide unique information about people, places and communities from the thirteenth century. They are used to study a wide variety of subjects, such as agriculture, landscape, land ownership, buildings, archaeology, crime, industrial development, urban growth and diet, as well as the broader topics of family, local and house history.

Anglo-Scottish Family History Society

The Society will be holding a one-day conference on Scottish research with the theme 'Born Scotland! What Next?' The venue will be at St Andrew & St George Centre, Bolton on Saturday 17 September. Many Scottish family history societies will be present and if you would like more information contact, the organisers at <office@mlfhs.org.uk>.

Research Centre News

Cliff Debney, Research Centre Manager

As most, if not all UK members will be aware, a series of ten television programmes appeared on Tuesday evenings between October and December called 'Who do you think you are?', with viewing figures in excess of five million. Each programme researched the family history of well known personalities, including Bill Oddie, Jeremy Clarkson, Ian Hislop and Moira Stuart. These programmes appear to have crystallised the interest of many people new to family history, giving them the 'know how' and confidence they needed to get started, and our Research Centre has been one of the beneficiaries with an influx of new visitors. Our records they show that the number of visitors rose in October, with the highest ever in November since 1995 and December's only three lower than the 1998 record.

Have you visited the Research Centre yet? Or perhaps you came some time ago and haven't been back since. Either way, do visit us and check all the items we hold, any of which may help you find that lost ancestor. At the last count we had about 7,500 books, indexes, fiche, films and CDs. We also have free broadband connection to the internet on our computers all and every day with easy access to the family history resources on the worldwide web.

1881/1891 censuses available online

MyFamily.com and The National Archives have come together to launch a new online service. Searchable indexes and scans of original documents from the 1881 and 1891 censuses for England and Wales are available at <www.nationalarchives.gov.uk/census>. And even more exciting — over the next two years all historic censuses from 1841 to 1891 will be made available online in the same way, providing information on everyone living in the country, including their ages, occupations and places of birth.

Searching the index of names is free and if you want to see the full original entry you can do that on a pay-per-view basis. In addition, the 1881 and 1891 census records will be free of charge if you are accessing them at The National Archives in Kew or at the Family Records Centre in Islington.

Living Local History

To celebrate the twenty-fifth anniversary of the Oxford Undergraduate Diploma in English Local History a day school on living local history will be held at Rewley House, Wellington Square, Oxford on 10 September. Among the distinguished speakers are two of the founding lecturers, Dr Kate Tiller and Joan Dils as well as Dr Martin West who will be speaking on late Stuart North Berkshire yeoman farm inventories. The fee will be £25 which includes a buffet lunch. For further details telephone 01865 270368.

Have you visited the Surrey History Centre?

Di Stiff, Archivist, Collections Development

Surrey History Centre collects and preserves archives and printed material relating to all aspects of the history of Surrey, and makes them available for reference. We can help you discover your family history; learn about famous Surrey people, buildings, businesses and organisations; trace the history of your house, street, town or community and provide help and advice regarding Surrey-based research projects.

We hold documents dating from the twelfth century to the present day as well as a vast collection of printed books, local newspapers, directories, maps, ephemera and illustrations. Of most use to genealogists of course are parish registers and census returns; as the Diocesan record office for Southwark and Guildford Dioceses we hold many parish collections for the county and all the Surrey census returns on fiche or film, 1841-1901.

As well as local sources we hold many nationally and internationally renowned collections, such as the business archive of Dennis Specialist Vehicles Ltd of Guildford; Lewis Carroll (alias Rev Charles Lutwidge Dodgson), author of the Alice in Wonderland stories who is buried in The Mount Cemetery, Guildford; the business archive of John Broadwood and Sons, the famous piano manufacturers; the records of Brookwood Hospital, Woking, the second County Asylum; and the archive of the Queen's Royal Surrey Regiment and its distinguished predecessors. There are topic pages for all of these collections on our website <www.surreycc.gov.uk/surreyhistoryservice>. Our main finding aids are searchable online: surprisingly, our Collections Catalogue (the electronic versions of our archive catalogue lists) revealed 728

hits in 270 collections using a simple search on 'Berks' and 'Berkshire'. These include a wonderful collection of early deeds relating to Winkfield, Berks, 1321-1363 (Ref. 2810/5/1-2) and the papers of Arthur Francis Leveson-Gower (1851-1922), diplomat, of Titsey Place, Surrey, who also resided for a time in Windsor (Ref. 498/-).

Another useful online resource for searching our collections is the A2A website <www.a2a.org.uk/> which I am sure many of you will already be familiar with. Surrey's Quarter Sessions records and large estate collections feature strongly on A2A. A simple search for 'Berkshire' proves fruitful if 'Surrey History Centre' is selected as the required repository. The cases of two Berkshire families in particular are revealed in the Quarter Sessions bundles for 1782.

At the Easter Sessions, 1782, an order is made by a Berkshire Justice allowing the County Treasurer of Berkshire to pay expenses to the overseers of Shaw, Berks, for maintaining the family of Henry Roffey of Shaw, a labourer serving as a substitute in the Surrey Militia for George Worsfold of Ewhurst (Ref. QS2/6/1782/Eas/15-16). Later that year further payments are made at the Michaelmas Sessions for the maintenance of Henry Roffey's family (QS2/6/1782/Mic/47-48), along with payment of expenses incurred by the parish of Waltham St Lawrence, Berkshire, in maintaining the family of William Weston, serving as a substitute in the Surrey Militia (Ref. QS2/6/1782/Mic/51-53).

A2A also highlights the magnificent and extensive estate records of the More and More-Molyneux families of Loseley Park, near Guildford, which date from the thirteenth

County of *Berksh* } WHEREAS at a Subdivision Meeting of the Deputy Lieutenants
 to wit. and Justices of the Peace, for executing the Militia Laws in the
County of Surrey Henry Roffey

of the Parish of *Shaw* was sworn
 and inrolled, to serve as a Substitute in the *Surrey Militia* for
George Worsfold an Inhabitant of and drawn by Ballot for the

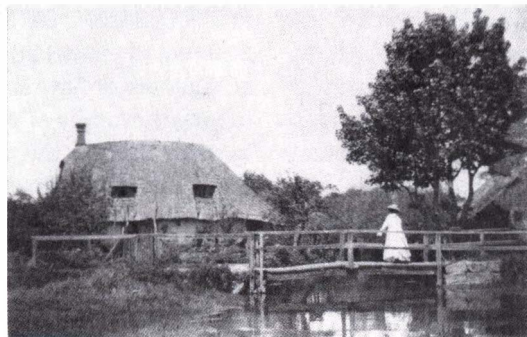
Parish of *Lehurst* in the *County of Surrey*
 And whereas the said Militia hath ever since the 17th Day of June, 1779,
 been and still is embodied and in actual Service. And whereas the said
Henry Roffey of the Parish of *Shaw*
 aforefaid, and his Family, to wit, *his Wife & Two Children*
 dwell there and not in the said Parish of *Lehurst*

for which the said *Henry Roffey* serveth. And whereas
 from the 1st Day of April 1781 to the 30th Day of March 1782
 the said Family hath been by Reason of the Absence of the said *Henry*
Roffey chargeable to the said Parish of *Shaw*

Right: Payment
 by the County
 Treasurer for
 expenses to the
 overseers of Shaw
 for maintaining
 the family of Henry
 Roffey

century. These are a treasure trove for early historical research especially as they contain manorial court records relating to several Berkshire manors including Enborne, Westbrook, Cookham, Shaw cum West Bradley, Benham Valance and Benham Lovell, Church Speen and Hampstead Marshall (Ref: LM/-). Many other landed Surrey families held property in both counties and you may indeed find rentals, deeds and marriage settlements which relate to Berkshire among some of our other large estate collections, including those of the Carew, Somers and Bray families.

On a more modern note, there are several collections within the records of Surrey County Council itself which contain material with Berkshire content, such as an unusual scrapbook of photographs of the Poyle gipsy



View of cottages at
 East Garston and
 East Shefford taken
 by Alfred Francis
 Jackson

site, Horton Road, Poyle, Berkshire, which was transferred to Berkshire County Council following the boundary changes of 1995 (Ref. CC693/3-4).

Illustrative material, whether it be photographs, postcards, engravings or watercolours counts for a large part of our holdings and a search of our various collections databases gives some fascinating results – for example, did you know that we have a superb watercolour of Sandhurst Military College in 1822 by the artist John Hassell (Ref. 4348/3/93/5), or that we hold sale particulars for The Deanery, Sonning, Berkshire, built in 1901 by the famous Arts and Crafts architect Sir Edwin Lutyens for Edward Hudson, founder of Country Life magazine (Ref. SP/1510). The grounds of The Deanery were designed by Gertrude Jekyll, Surrey's renowned garden designer, artist and photographer, who resided briefly in Berkshire (1868-1876) and for whom we hold many papers, including watercolours, photographs and garden plans.

With Surrey's boundaries bordering Berkshire there are inevitable overlaps with some material such as photographs, maps, deeds, Quarter Sessions records, deposited plans and even health authority records.

A good example of this is a superb early photograph album which contains views from both counties including images of cottages at East Garston and East Shefford, Berkshire, 1908-1912, taken by Alfred Francis Jackson, a keen photographer from Brighton (Ref. 2157/1). Similarly, the records of the Surrey Boards of Guardians also reflect an overlap. Thorpe was transferred from Windsor Poor Law Union, to Chertsey Union, Surrey, in 1894, the Union workhouse being located at Ottershaw. We hold a near-complete set of admission and discharge registers for the Union from 1894 to 1932 (when most of the responsibilities of the Surrey Poor Law Unions were transferred to Surrey County Council), as well as registers of births, deaths and vaccinations (Ref. BG1/-).

Visitors to the Centre should possess either a Surrey Library Card or County Archive Research Network (CARN) ticket, a system which is also in use at Berkshire Record Office. If not, you will need to bring some means of identification with you that shows your name and address (driving licence, utilities bill, etc) so that we may issue you with a reader's ticket.

Unusual gravestone inscription

Hazel Newton found this inscription in St. Andrew's Churchyard at Sonning. She feels sure that the relatives of the deceased didn't think too carefully, or didn't understand the full meaning of this unfortunate inscription.

Like most archive office, pens, coats and bags are not allowed in the research area but lockers and a refreshment area are provided for your convenience.

Disabled access is provided and we have various aids for researchers with visual impairment including a CCTV scanner. Please let us know if you have any particular user needs and we will be happy to help.

Both weekdays and Saturdays can get busy for fiche and film readers, so booking is advisable. It is always best to ring us in the first instance and check that we hold what you want to see, rather than have a wasted journey. If you cannot visit us we do run a Paid Research Service and have a charging system in place for other enquiries.

Surrey History Centre, 130 Goldsworth Road, Woking, Surrey, GU21 6ND. Tel: 01483 518737. Fax: 01483 518738. Email: shs@surreycc.gov.uk. Website: <www.surreycc.gov.uk/surreyhistoryservice>.

Opening times: Mon- closed; Tues, Wed & Fri - 9.30am-5pm; Thurs - 9.30am-7.30pm; Sat - 9.30am-4pm

We look forward to seeing you soon!



Treasure trove of documents and indexes found at Reading Library

Charlotte Gerlings and Barry Boulton

It's almost five years since we appealed for information on the collection of family and local history documents and indexes collected by local genealogist Miss Maplesden who lived at Northcourt Avenue, Reading. At the time we did not receive a response, but recently Charlotte Gerlings, a former neighbour, gave us more information on Miss Maplesden and Barry Boulton has been able to discover a treasure trove of material collected by Muriel Maplesden.

Charlotte Gerlings described Miss Maplesden as a recluse, probably in her late forties. 'It was hard to tell because we only glimpsed her now and then. The one conversation we ever had was when my mother saw she had her arm in a sling and went round to ask if she needed any help – the offer was refused. But my mother did say that on that occasion Miss Maplesden's hallway seemed crammed with cardboard boxes. Maybe they were some kind of filing system.

'Miss Maplesden's bungalow was run down and her garden was a jungle, full of privet and brambles front and back. She had a crumbling shed just at the rear of her premises and it contained heaps of papers. As far as I remember, it was old correspondence mixed up with things like bills and clothing catalogues. I wonder now if the indexes and other documents were among them. If so, I doubt that they could have been intact even then because there were rats nesting somewhere around the place - we occasionally saw them running across our lawn. Throughout our early years at No 13, Miss Maplesden had one regular Visitor, Mr Arthur Clark, a local

solicitor. He was what seemed to me then an elderly man, always formally dressed including a bowler hat. Like a silent film comedy actor, he would walk up Northcourt Avenue as far as her garden gate, pause, look to left and right and then dive in, along the narrow path carved out for the postman and the milkman to her front door (which was actually on the side farthest from us). This could all be observed from our upstairs window'.

Intrigued by this information Barry Boulton, a leading member of the Reading Branch of the Society, found out more about this mysterious woman and her elderly friend, Mr Arthur Clark, 'her solicitor'. He did 'take her in' by marrying her! He lived a few houses away at 30 Shinfield Road. *The Berkshire Chronicle* of 7 Sept 1956 carried the announcement: 'Bishop of Reading will officiate – The wedding of 75 year old Alderman A F Clark former Mayor of Reading and Miss Muriel Maplesden, his secretary, has been fixed for Sat 6 Oct at Christchurch, Reading. Alderman Clark, who has served on Reading Town Council continuously since 1919, was mayor of Reading 1950-1. Miss Maplesden who is in her 60's is the eldest daughter of the late Arthur Maplesden who was Canon of Southwark Cathedral for over 30 years.'

Three deposits of deeds were made to the Berkshire Record Office by Mr Clark. The Record Office also has deposits of the Miss Maplesden (later Mrs A F Clark) collection under D/Ex729 that were deposited by Dr P Marr of Reading University in 1984 (acc 3439) Cat PD7/84.

First were notes on a talk given to the Reading Civic Society in July 1946 on Reading's Old Churches. Second was her contribution to Oxford VCH and contained essays on Eye and Dunsden 1950-1. Other papers are deposited under D/Ex159/1-11, were originally presented to the Librarian of Reading Public Library in April 1961 (acc 833 part) and Nov 1977 (acc 2269 part). Notes on the deposits report that Mrs Clark née Maplesden worked on uncatalogued papers in Reading Archives Collection for some years before her death in 1961. The Berkshire documents from her collection were transferred to the BRO by the Librarian between 1961 and 1965. Many other documents on other counties were distributed to the respective county record offices in 1962. Some of the title deeds listed appear to have been purchased from dealers they relate to the Maplesden family and date from 1509 (D/Ex 179/3). Under D/Ex179/2 is an abstract of seventeenth and eighteenth century deeds listing the Court Rolls of the Manor of Thatcham 1581-1679.

A quantity of Miss Maplesden/Mrs A F Clark's collection on Reading and its contiguous parishes has been languishing at the Reading Local Studies Library. Armed with a duster and a few minutes to spare, Barry found this material includes card indexes, box files, notebooks etc, compiled over many years. The index cards include a wide range of subjects of interest to family, as well as local, historians. Some references may have been extracted from sources that have now been catalogued and even published elsewhere, eg Berkshire wills, some material however may have been lost and this index is the only source!

The following is a sample of the material: Apprentices & Masters, Deeds, Quit rents, notes on Bellfounders, Justices and Members of Parliament. Other files are of Eye & Dunsden, Caversham, Earley and Swallowfield.

There are lists of boys admitted to Blue Coat School, maps of Sonning and of Caversham. The four-drawer unit of card indexes of genealogical notes arranged by Parish has some marriage licence references and some MIs.

There is a possibility that a project will be started with the BFHS and the co-operation of Reading Library to bring the material into use, but in the meantime we shall all have to wait until the material is examined with care.



MARATHON

**New and Refurbished Fiche
Readers and Printers at
Reasonable Prices**

**Lamps and Spares for most
Machines**

**Master Fiche/Films and Diazo
Copies Produced
CD-R Mastering and
Duplication**

Marathon Microfilming Ltd
27-29 St Marys Place, Kingsway
Southampton SO14 3HY
Tel 023 8022 0481 Fax 023 8023 0452
www.marathon-microfilm-cdrom.co.uk
sales@marathon-microfilm-cdrom.co.uk

REME
www.rememuseum.org.uk

Museum of Technology

Museum of the

Corps of Royal Electrical and Mechanical Engineers

Isaac Newton Road Arborfield Berkshire RG2 9NJ

Admission: Child £2 , Adult £3,
Family £8 (2 adults and up to 3 children, under 5s go free)
OAP and Concessions £2.50

Opening times: Mon - Thu - 09.30 to 16.30
Fri 09.30 to 16.00 Sun 11.00 to 16.00

Archives: Open by appointment.
Guided access £10 per day and research available at £10 per hour.

Booking & information Tel. 0118 9763375
email: enquiries@rememuseum.org.uk

Photographic Restoration



A digital photographic restoration service for the repair of your treasured photographs, damaged by accident and time.

Services include: repair of tears, creases, scratches, removal of unwanted people and objects, red eye, making of composites, adding sepia tones or changing from black and white or colour.

To obtain a brochure containing a full list of services and current price list telephone;

01628 635304

or in writing to:

27 Aldebury Road, Maidenhead,
Berkshire, SL6 7EY

Foto Restore

Turning a Disaster into a Memory

It's a long way from Tipperary — a search for a great-great-grandfather

Ian Kitson

Searching the 1881 census I located my father's maternal family living in London where I expected to find them. What little information I already had about various family members matched and I was sure the right family had been located. One thing that did surprise me was that great-grandfather was born on the Isle of Wight.

With the help of the Hampshire Genealogical Society index to the 1851 census, I found my family domiciled at Parkhurst Barracks¹. Like most people I had heard of the prison but not the barracks. So great-great-grandfather was a soldier but his age was given as 50. Was he still on some form of active service or on garrison duty? Perhaps he worked for the army but in what capacity and for which regiment? As always with family history I found more questions than answers.

I decided to consult the original census records at the Family History Centre at Myddelton Street. I will be eternally grateful to some long-deceased census enumerator for his clear script and thoroughness. Great-great-grandfather was James Power, age 50, born Tipperary Ireland, occupation Hospital Steward and in brackets Chelsea Pensioner. Unfortunately the 1851 census does not record details of regiment. His immediate neighbours are identified as 'Soldier in the Army' or 'Sergeant in the Army' with members of their immediate families described as wife of Army Sergeant or daughter of Army Sergeant.

So great-great-grandfather had been a soldier, was now retired and a hospital steward drawing a pension. We are all familiar with the Chelsea Pensioners in their scarlet coats, but

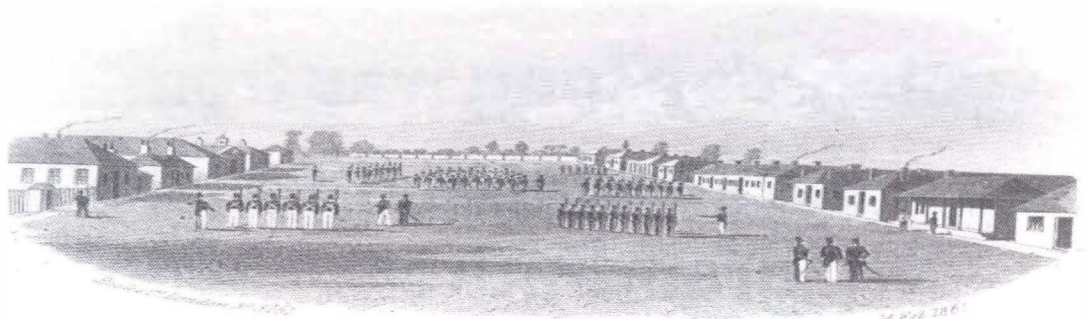
far more men received a pension after completing the requisite number of years' service or discharged due to wounds, injury or incapacity but did not live at the Royal Hospital itself.

Still some questions remained: which regiment did he serve in and in what campaigns did he participate? Searching the internet I found two useful websites — first and most importantly The National Archives website <www.catalogue.nationalarchives.gov.uk>. I looked for James Power and found details of a number of records. Only one fitted him exactly: James Power, born Moderancy, Tipperary. Served in Rifle Brigade, discharged aged 43. The Rifle Brigade was the legendary 95th Rifles. I then discovered <www.regiments.org> a definitive guide to all Land Forces of Britain, the Empire and Commonwealth, an essential tool for anyone undertaking military research.

Armed with the reference WO 97/1085/119 from the National Archives Catalogue I searched the microfilm records. Personally I do not find microfilm the easiest media to use as I belong to the computer generation where a search engine does the work for you. The actual documents have not copied particularly well but are readable and with a little adjustment of the printer, readable copies can be produced at a reasonable cost.

After some searching, there was great-great-grandfather. He enlisted as a private in the 2nd Battalion of the Rifle Brigade in 1819, giving his age as 18. His occupation is stated as farmer and he received a bounty of ten shillings (fifty pence) which would equate to around £20 at today's values. A brief and very

A lithograph of
Parkhurst Barracks
dated 14 February
1861



basic description of the recruit is given height, colour of hair and eyes, distinguishing marks. A magistrate signed the attestation papers, the recruit having made oath to faithfully serve the King until such time as he was legally discharged.

James Power must have been a good soldier for less than two years later he was promoted corporal and four years afterwards to sergeant and then to colour sergeant after a further three years' service. The records show that he served overseas in Malta for six years and for four years in the Ionian Islands, which Britain had gained possession of in 1814. The six islands which make up this group of Greek islands include Corfu and Kefalonia and were ceded by Britain to the Greek state in 1864.

After service totalling 24 years 306 days he was discharged, due to chronic rheumatism rendering him unfit for further service as a soldier. This decision was taken by a Regimental Board on the recommendation of a surgeon and confirmed by the principal medical officer. A space on the form headed 'with regard to character and conduct' states, 'his character and conduct has been exemplary'. Great-great-grandfather remained

at Parkhurst Barracks as a hospital orderly as an out-pensioner of the Royal Hospital Chelsea which at that time administered army pensions.

As ever there are always more avenues to research and as time permits I intend to find out more about Parkhurst Barracks, the Rifle Brigade and of course the man himself.

In 1816 the Rifles were taken out of the numbered Regiments of the Line and re-titled The Rifle Brigade. They saw no more active service for thirty years, until they fought in South Africa in the Kaffir Wars of 1846-47 and 1852-53, against the Boers in 1848, in the Crimea, the Indian Mutiny and in colonial campaigns in Ashantee, Afghanistan, Canada, Burma and Sudan, including the Battle of Omdurman.

References

- 1 Hampshire Genealogical Society, Record Series, Index to the 1851 Census
<www.armymuseums.co.uk>
<www.royalgreenjackets.co.uk>
- National Archives WO 97/1085/119
- 2Urban, Mark, Rifles Six Years With Wellingtons
Legendary Sharpshooters

A Parade at Parkhurst
Barracks at the turn
of the last century



Caldecott House, Abingdon

David Rayner

View of cottages at East Garston and East Shefford taken by Alfred Francis Jackson



Caldecott House was located on the other side of the Ock from Abingdon, between the Drayton Road and the River Thames. For at least a hundred years Caldecott House had been part of local life, hosting flower shows and fetes. In the post-war period Caldecott House was bought by Dr Barnardo's and many Abingdonians would have known the home's children as classmates and friends.

Caldecott House was built in 1738 and demolished in 1972 to make way for a housing estate. It had replaced the even older Manor of St Helens which was probably built on the site known today as the Wilderness. The original Manor goes back to Saxon and Norman times. First mention is made of land being held at Caldecott by Lewin, a goldsmith, and Alwead, a priest, at the time of Edward the Confessor.

The land was later owned by the Abbey Church; it was granted to Reinald (Reginald), a knight who owed Knight-service to the Abbey before 1100. He adopted the name St Helens so the estate was known as St Helens Manor. The Caldecott estate originated when the lands of John of St Helens were split between his two daughters and their husbands. In 1242, Matilda married her cousin Phillip of St Helens and received the

half of the manor which retained the old name of St Helens together with the manor house. While Meliora, who had married John De Turbeville, acquired the remainder of the old manor consisting of lands lying to the South of the Ock and West of the Thames near Abingdon — which came to be called Caldecott. Their manor house was probably situated near Ock Bridge on Drayton Road. Caldecott is derived from the old English 'ceald' and 'cote', meaning cold cottage. It was in the parish of Sutton Courtney, later in the parish of Sutton Wick.

Later owners included the 3rd Baron Walter De St Amand and his son Lord Almaric. In 1442 Sir John Golafre of Fyfield Manor presented the Manor of St Helens to the Fraternity of the Holy Cross, the predecessors of Christ's Hospital. In 1479 it was recorded that the original site of the manor was lost. In 1738 Caldecott House was built (a stone in the wall of Caldecott House bore that date), probably by Edward Saxton who was a Mayor of the Borough in 1729. Dr Thomas Carte, a Jacobite historian, lived in Caldecott House until his death in April 1754. William Birch and his wife lived in the house for two or three years around 1757; Mrs Birch looked after 16 orphans and found them wet nurses in the area. The children came from Thomas Coram's Foundling Hospital in London. Subsequently various Saxtons lived here until the Lintall family become owners. The Lintalls must have added the large drawing room in 1820 and probably enlarged the kitchens. Their tomb was recently uncovered during the renovation of the underfloor heating of St Helens. Their daughter, Anne Lintall, became a principal

actor in 'North Berkshire's Great Divorce Scandal'. In 1840 the last Lintall died, and their reputed butler, Thomas Musson, became owner. In 1854 William Musson died and Caldecott House was auctioned. In 1869 Thomas Hyde bought the greater part of the agricultural estate from Christ's Hospital and built the stables and lodge which bore his initials.

In 1880 Thomas Hyde's widow Margaret died. Later in the same year General (then Colonel) Bailie went to Abingdon from Oxford, first renting and afterwards purchasing the Caldecott House estate, on which he carried out extensive improvements, the gardens and grounds being among the most picturesque in the neighbourhood. In 1934 the Bailies inherited an even bigger estate, and sold Caldecott House. However, the General's widow Amy Bailie moved to Wharf House with her daughter Hope. Hope a spinster, who died in 1969, will be remembered by many older residents.

Caldecott House was then purchased by a Mrs Boyd and became the short-lived Caldecott Hotel. During the war Caldecott House was requisitioned by Bomber Command Accounts. Immediately after the war Caldecott House became a Dr Barnado's Home with Walter Brampton as superintendent. The Dr Barnardo's summer fete was one of highlights of Abingdon's year. Many celebrities officiated including Princess Margaret, Jack Hawkins and Sir Edmund Hillary, the mountaineer. Caldecott House was still in vast grounds and had every kind of sports field, kitchen gardens, horse riding and even a boathouse.

In 1972 Caldecott House was demolished and replaced by the St Amands housing estate (rarely known as Grestun's Estate). Many of the names associated with the estate are commemorated by streets and many well known local families were at one time in service at Caldecott house - the Wiblins and Juggins for example.

This partial history is derived from many sources, but I should mention Mrs Julie Gray who researched much of this information. I am keen to learn of any anecdotes or photographs relating to Caldecott House. In particular I would like to receive photographs of the kitchen gardens, the house from the Ock side, the boathouse, the 18 (prefab) bungalows, the MG Sports Club, good quality interior shots, anything relating to Caldecott Hotel, Caldecott Farm, the RAF years, and photographs of the demolition.

Please send the information to David Rayner, 12 Godfrey Close, Abingdon, Oxon OX14 5RA or to david@rayninfo.co.uk or telephone 01235 537860.

Right:: The Bailie family. See also Lady Palmer on page 3



Publications

Mail Order Booklist

The Society Bookshop is a service provided by Berkshire Family History Enterprises Ltd, a wholly owned subsidiary of the Berkshire Family History Society. This list represents only a fraction of the many books available from our Bookshop. A complete and up-to-date list can be found on our website at <www.berksfhs.org.uk/berksfhsbooks> or by writing to Mail Order at BFHS, Yeomanry House, Reading, RG1 7TJ or by telephone on +44 (0) 118 950 9553.

Books about places in Berkshire

	UK	Abroad
Around Abingdon (Archive Photograph Series)	£11.15	£11.90
Around Ascot, Reg Morris	£13.15	£13.90
Barkham - A History, D. French & J. Firth	£8.85	£9.65
A short history of Bear Wood and Sindlesham, Jim Bell	£3.90	£4.15
Benson - A village through its history, Kate Tiller	£13.80	£14.55
Brightwalton, A downland village, J Osment etc	£8.70	£9.25
Chilton, Up in the downs, Frank Dumbleton	£11.35	£12.15
Cookham (Archive Photograph Series)	£10.70	£11.30
Around Didcot & the Hagbournes, Brian Lingham	£9.15	£9.90
People of Didcot, Kenneth Caulkett	£10.95	£11.70
Maidenhead: a Pictorial History, Luke Over	£13.50	£14.35
East Ilsley - Photographic Memories 1900-1970	£11.45	£12.30
'Time gentleman please', 300 years of Public Houses in East and West Ilsley, Suzanna G. Burnay	£8.75	£9.30
A history of the parish of East Woodhay	£9.35	£10.15
Past and Present Emmer Green (2nd edition)	£11.50	£12.35
Enborne - Narrowing the field	£1.90	£2.15
Enstone: Lifting the latch - A life on the land	£10.30	£11.10
Eton Wick - A Photographic History	£11.70	£12.50
Eton Wick 1217-1977, the Story of a Village	£6.10	£6.60
Finchampstead in old pictures	£5.75	£6.30
Hagbourne: Diary of a Village School, Monica Lawson	£10.50	£11.35
Windsor Hakebourne - A story of West Hagbourne	£11.95	£12.75
The Parish of Hinton Waldrist, Peter Keene	£3.45	£3.80
Reminiscences of 20th century Hungerford	£4.50	£4.85
Hurst, 19th Century St Nicholas Church, Jim Bell	£3.90	£4.15
Kelly's Directory of Berkshire 1903	£14.80	£16.15
Kingston Bagpuize with Southmoor, Keen & Kelly	£3.45	£3.80
Kintbury - A Century Remembered 1900-1999	£7.45	£8.20
Longworth - A sense of place, Peter Keene	£3.45	£3.80
Lyson's Magna Britannia - Berkshire (1806)	£13.50	£14.35
Are you married or do you live in Maidenhead?	£15.00	£15.95
Around Maidenhead in old photographs	£8.95	£9.70
Mortimer in Old Photographs	£10.15	£10.90
The Story of Newbury, Tony Higgott	£11.10	£11.85
Purley on Thames at the Millennium, John Chapman	£3.50	£3.90
Reading - Britain in Old Photographs	£7.95	£8.70

The Town of Reading and its Abbey, Cecil Slade	£11.30	£12.10
Reading Borough Police Register 1865-1880	£4.00	£4.35
Reading Borough Police Register 1881-1904	£4.00	£4.35
Sandhurst - a look back in time	£5.00	£5.35
Sandhurst & Crowthorne: Public houses 1740-1950	£4.00	£4.35
Shinfield: a walk around our village	£5.50	£5.85
Shinfield, Those were the days, George & Eileen Taylor	£3.00	£3.40
Tudor and Stuart Shrivensham, Dils and Schwartz	£7.45	£8.20
Slough - A Century of Change	£10.95	£11.70
Sonning, Eye and Dunsden Two Centuries of Change	£11.50	£12.35
A Hundred years of South Moreton School	£4.45	£4.80
Spencers Wood - Our Village	£5.60	£6.10
The Bobby's Notebook - On the beat in early Victorian Sunninghill, C. Weightman	£5.50	£5.85
Tadley - people and places	£10.20	£10.90
Around Tadley - fact and fable	£9.35	£9.50
A Popular History of Thatcham, Peter Allen	£5.95	£6.70
Thatcham over 2000 years including Cold Ash Greenham & Midgham	£6.95	£7.70
Around Thatcham, Peter Allen	£11.15	£11.90
More of the Tilehurst we remember	£6.75	£7.30
Twyford - A Village Post Office, John and Sheila Rudd	£3.00	£3.40
Twyford - old inns & alehouses, John and Sheila Rudd	£1.75	£2.15
Twyford - St Mary the Virgin parish register extracts 1863-1882, Jim Bell	£4.00	£4.35
Twyford's Railway Heritage, Marion & John Pearse	£3.25	£3.65
Vale of the White Horse (Images of England)	£10.95	£11.70
Rural life in the Vale of the White Horse 1780-1914	£9.10	£9.85
Wokingham- The Town of My Life, Ken Goatley	£8.85	£9.50
Window on Wallingford 1837-1914, J & S Dewey	£19.10	£19.75
Wallingford and the Civil War, J & S Dewey	£3.15	£3.40
The Second Book of Wargrave	£19.45	£20.25
The History of West Woodhay with Enstone Hamstead Marshall, Inkpen & Combe	£3.50	£3.90
White Waltham - A Village at War	£7.00	£7.35
A Thousand Years of Windsor	£7.50	£8.35

Eureka Publications

Berkshire Poll Book 1727	£5.35	£5.85
Bradfield Union Workhouse Births and Deaths	£3.00	£3.40
Cookham Union Workhouse Births and Deaths	£2.65	£2.95
Eton Union Workhouse Deaths	£3.00	£3.40
Henley, Wallingford and Wokingham Registration Districts Marriage Notices 1837-1856	£2.40	£2.65
Maidenhead Congregational Church Baptisms 1745-1905, Marriages 1879-1895 Burials 1791-1908	£3.80	£4.05
Reading Registration District Marriage Notices 1837-1848	£3.00	£3.40

Indexes

	UK	Abroad
Berkshire Overseers' Papers (by Poor Law Unions)		
Vol 1 Newbury: Chieveley	£3.40	£4.35
Vol 2 Newbury: Brimpton, Enborne, Wasing, Woolhampton	£3.40	£4.35
Vol 3 Newbury: Thatcham	£4.35	£5.35
Vol 4 Bradfield: Aldermaston, Englefield, Pangbourne	£3.40	£4.35
Vol 5 Bradfield: Abbots & Bannister, Bucklebury, Burghfield, Stanford Dingley, Sulham, Sulhamstead, Theale	£3.40	£4.35
Vol 6 Bradfield: Tilehurst, Padworth	£4.35	£5.35
Vol 7 Maidenhead: Bray, Cookham, Waltham St Lawrence	£3.40	£4.35
Vol 8 Faringdon: Ashbury, Coleshill, Great Coxwell, Kingston Lisle, Longworth, Shellingford, Stanford in the Vale, Uffington	£3.40	£4.35
Vol 9 Wallingford: Brightwell, Crowmarsh Gifford, Newnham Murren, Wallingford St Mary & St Peter Long Wittenham	£3.40	£4.35
Vol 10 Easthampstead: Easthampstead, Warfield, Winkfield	£4.35	£5.35
Vol 11 Wokingham (part of): Shinfield, Sonning, Swallowfield, Wokingham-	£3.40	£4.35
Vol 12 Wokingham & Windsor: Finchampstead, Hurst, Sunninghill, Old Windsor	£3.40	£4.35
Vol 13 Wantage: Blewbury, Brightwell, Hampstead Norris, West Hanney, Harwell, West Hendred, Peasmore, Sparsholt, and part of Wantage	£4.35	£5.35
Vol 14 Wantage: remainder	£4.35	£5.35
Vol 15 Abingdon: Abingdon, Cumnor, Drayton, Kingston Bagpuize, Sutton Courtenay	£3.40	£4.35
Vol 16 Reading Union (part of): St Giles	£4.35	£5.35
Vol 17 Reading Union (part of): St Giles	£4.35	£5.35
Vol 18 Reading Union (part of): St Giles	£4.35	£5.35
Vol 19 Reading Union (part of): St Giles	£4.35	£5.35
Vol 20 Reading (part of): St Mary	£4.35	£5.35
Vol 21 Reading (remainder of): St Mary	£4.35	£5.35
Vol 22 Reading: Caversham	£4.35	£5.35
Vol 23 Hungerford: Kintbury & part of Hungerford	£4.35	£5.35
Vol 24 Hungerford (part of): Hungerford	£3.40	£4.35
Vol 25 Hungerford (remainder of): Hungerford	£3.40	£4.35
Vol 26 Newbury: Newbury Settlement Examinations	£4.35	£5.35

(This series is now complete and it is hoped to have a name index for all entries published during 2005.)

Berkshire Census

Full 1851 transcript with name index on CD* £23.10 £24.10

* Microfiche transcripts with a name index are available for some Enumeration Districts. Printed booklets of the surname are still available for a few districts.

Toomer's 1815 Census of Newbury £7.50 £8.85

CD Roms

National Burial Index on two CDs £45.00 £46.00
(upgrade price for first edition buyers £25)

Berkshire Burial Index on CD ROM:* £15.35 £14.50
(from the Bookshop, including p&p)

* This edition of the Berkshire Burial Index supersedes the first edition published in November 2002. It contains over 280,000 burials. If you have already purchased the first edition and would like to receive the updated version, simply return your CD with a cheque for the correct amount £4.50 £5.35

alternatively purchase the new version at the Bookshop. £13.00 £14.35

Snare's Post Office Directory of Reading 1842-3 £8.10 £9.75

North Berkshire Census (microfiche)

1841 Transcript and indexes are available for:

Moreton and Wantage Hundreds	£9.00	£9.00
Faringdon	£9.00	£9.00
Shrivenham & Ganfield Hundreds	£9.00	£9.00
Oxford City (including Grandpont & Oxford Aldgate)	£9.00	£9.00
Abingdon	£9.00	£9.00
Ock & Hormer Hundreds	£9.00	£9.00

1861 Census Index only:

Abingdon	£3.00	£3.00
Faringdon	£3.00	£3.00
Henley (including Remenham)	£3.00	£3.00
Oxford City (including Grandpont and Aldgate)	£3.00	£3.00
Wallingford	£3.00	£3.00
Wantage	£3.00	£3.00

1871 Census Index only:

Abingdon	£3.00	£3.00
Faringdon	£3.00	£3.00
Henley (including Remenham)	£3.00	£3.00
Oxford City (including Grandpont & Oxford Aldates)	£3.00	£3.00
Wallingford	£3.00	£3.00
Wantage	£3.00	£3.00

1891 Census Index only:

Abingdon	£3.00	£3.00
Faringdon	£3.00	£3.00
Henley (including Remenham)	£3.00	£3.00
Oxford City (including Grandpont & Oxford Aldates)	£3.00	£3.00
Wallingford	£3.00	£3.00
Wantage	£3.00	£3.00

Oxfordshire including North Berkshire Census name indexes on CD ROM:

1861 (except Woodstock sub-district)	£17.50	£17.50
1871	£17.50	£17.50
1891	£17.50	£17.50

Parish registers

Barkham St James 1538–1998 (CD)	£5.50	£6.85
Barkham St James 1538–1998 (fiche)	£5.35	£6.35
Burghfield St Mary 1559–1987 (CD)	£7.50	£8.85
Burghfield St Mary 1559–1987 (fiche)	£7.35	£8.35
Clewer St Andrew 1607–1860 (CD)	£8.50	£9.85
Clewer St Andrew 1607–1860 (fiche)	£8.10	£9.10
Combe St Swithin 1560–1985 (CD)	£3.50	£4.85
Combe St Swithin 1560–1985 (fiche)	£3.40	£4.35
Compton Parva 1553–1955 (CD)	£5.35	£6.35
Compton Parva 1553–1955 (fiche)	£5.50	£6.85
East Ilsley, St Mary's 1608–2003 (CD)	£5.35	£6.35
Peasmore, St Barnabas 1538–1991 (fiche)	£4.35	£5.35
Reading St Laurence – Baptisms 1813–1888 (fiche)	£4.35	£5.35
Swallowfield, All Saints 1539–1962 (CD)	£7.50	£8.85
Theale, Holy Trinity 1832–1968 (CD)	£4.50	£5.85
Theale, Holy Trinity 1832–1968 (fiche)	£4.35	£5.35
West Ilsley, All Saints 1558–1967 (CD)	£4.50	£5.85
West Ilsley, All Saints 1558–1967 (fiche)	£4.35	£5.35

Berkshire war memorials transcriptions and indexes

Berkshire War Memorials (Part 1): Villages, towns and parish churches 1838–1982	£9.80	£10.70
Berkshire War Memorials (Part 2): Military Units 1854–1991	£4.30	£5.20

Berkshire monumental inscriptions

Berkshire monumental inscriptions are available on microfiche for many churchyards and cemeteries. A complete list together with prices can be obtained from the Society website on <www.berksfhs.org.uk/berksfhsbooks> or by contacting our Bookshop at Yeomanry House, Reading, RG1 7TJ or by telephone on +44 (0)118 950 9553.

Parish registers on CD ROM

Abingdon Reg. District Volume 1:

Abingdon St Helens, Abingdon St Michael (Bap & Mar only), Abingdon Workhouse (Bap only), Abingdon St Nicholas, Culham, Milton, Sandford on Thames, Shippon	£17.50	£17.50
--	--------	--------

Faringdon Reg. District Volume 1:

Ashbury, Baulking, Bourton, Charney Bassett, Compton Beauchamp, Fernham, Hatford, Kingston Lisle, Little Faringdon, Pusey, Shellingford Stanford in the Vale, Watchfield, Woolstone	£17.50	£17.50
---	--------	--------

Wallingford Reg. District Volume 1:

Brightwell, Cholsey, Long Wittenham, North Moreton, Sotwell, Wallingford: St Leonard, St Mary, St Peter, Baptist Chapel, Independent & Primitive Methodist Churches	£17.50	£17.50
---	--------	--------

Wallingford Reg. District Volume 2:

Aston Tirrold, Aston Tirrold URC (Bap & Bur only), Aston Upthorpe, Benson, Crowmarsh Gifford, Didcot, Dorchester, Hagbourne, Mongewell, Moulsoford, South Moreton	£17.50	£17.50
---	--------	--------

South Oxfordshire Area Volume 1:

Caversham: St Peter, St Andrew, St Bartholomew, St John, Goring, Goring Heath, Sonning, Whitchurch	£17.50	£17.50
--	--------	--------

Wantage Reg. District Volume 1:

Wantage (including Union Workhouse), Chilton, Grove, Letcombe Bassett. Letcombe Regis	£17.50	£17.50
---	--------	--------

Placing orders

Orders should be sent by mail to Mail Order, BFHS, Yeomanry House, 131 Castle Hill, Reading RG1 7TJ. Cheques should be made payable to BerksFHSBooks in sterling or for an equivalent amount in Australian, Canadian, New Zealand or US dollars or in Euros. Currency conversion rates may be found in daily newspapers or on the internet.

Books are priced to be sent by surface mail. For air mail prices, please contact us by email at bookshop@berksfhs.org.uk or by post at the above address. Fiche, CDs and computer diskettes are priced to be sent by air mail to all destinations outside the UK unless the order also includes books in which case they will also be sent surface mail. Allow four weeks for UK and overseas air mail to twelve weeks for overseas surface mail for delivery.

Terms and Conditions of Sale

Customers have the right to cancel an order for goods within seven working days of receipt of the goods. The seven day 'cooling off' period excludes Saturdays, Sundays and Bank Holidays. Notification of intention to cancel must be received by the Society, in writing, within the cooling off period. A telephone call is not acceptable. Either send a letter to BerksFHS Bookshop, Yeomanry House, 131 Castle Hill, Reading, Berkshire RG1 7TJ or by email to bookshop@berksfhs.org.uk.

On receipt of your notice the Society will refund the retail sale price of the goods if they are returned in a re-saleable condition. The goods are to be cared for by the customer at the customer's risk. The cost of returning the goods must be paid for by the customer. The Society will make payment of a refund within 30 days of receipt of the returned goods. Refunds will be made by sterling cheque. No refunds will be made in respect of CDs where the customer has broken the seal or wrapper. If the Society has been asked to supply a service, for a fee, then once the request and fee for the service has been received by the Society, it will begin the process and no cooling off period shall apply, with the consequence that no refund of fee shall be made even if the customer wishes to stop the service. The law of England shall apply to this contract.

BerksFHSBooks is the trading name of Berkshire Family History Enterprises Ltd. Company No. 4733795 England, Registered Office: Clarke House, 65 High Street, Egham, Surrey TW20 9EY. Berkshire Family History Enterprises Ltd is a wholly owned subsidiary of Berkshire Family History Society (Registered Charity No. 283010).

Vouchers for use on the internet

Vouchers for the 1901 PRO census at <www.1901census.nationalarchives.gov.uk> and for Family History online at <www.familyhistoryonline.net> may also be ordered from the Bookshop in £5.00 and £10.00 denominations. Please add 50p (UK) or £1.30 (overseas air mail) p&p when ordering alone.

New additions to the Library

Books on Berkshire:

Changing Faces of Faringdon
Cumnor Parish 2000
Kelly's Directories: Maidenhead, Reading & Windsor (various dates)
Thatcham 1852-2002
Waltham Place and Its Surrounding Parish

Books on other counties:

Machine Breakers:

- Buckinghamshire
- Dorset
- Gloucestershire

Bygone Kent

Durham in Pictures

Newcastle-on-Tyne

Northumberland

CD ROMS

Oxfordshire parish registers:

- Banbury, Bicester, Chipping Norton,
- Headington, Oxford, Thame & Woodstock

Berkshire parish registers:

- Wantage & Wallingford districts

Gloucestershire marriage index 1800-1837

Wiltshire, Berkshire & Dorset marriage licence bonds

Microfiche

Abingdon St Helen baptisms & burials 1686-1812

Abingdon St Michael baptisms and marriages 1868-1892

Criminal petitions register 1819-1839 (four parts)

Oxfordshire electoral registers 1865

Banbury & Belthrop

Oxfordshire electoral registers 1885:

Middle, North & South Divisions

Oxfordshire parish registers:

Adderbury, Epwell, Hampton Gay, Littlemore Hospital, Middleton Stoney, Wolvercote

Family history source books:

- Finding Italian Roots
- First Name Variants
- German Research Companion
- History's Midwives
- Jewish Documentary Sources in Russia, Ukraine & Belarus

Berkshire Burial Index update

The parishes and periods which have been added to the Berkshire Burial Index since the position shown in the December 2004 issue of the Berkshire Family Historian are set out below. The index now contains more than 366,000 entries.

Appleford SS Peter & Paul 1564-1761 and 1813-1988

Appleton St Laurence 1813-1891

Arborfield St Bartholomew 1707-1736 and 1739-1812

Ashbury St Mary 1734-1784

Binfield All Saints 1813-1868

Brightwell St Bartholomew 181 -1867

Chaddleworth St Andrew 1852-1919

Charney Bassett St Peter 1813-1979

Clewer St Andrew 1851-1856

Drayton St Peter 1919-1967

East Lockinge All Saints 1664-1739 and 1788-1812

Enborne St Michael & All Angels 1838-1929

Faringdon All Saints 1644-1780 and 1813-1831

Great Coxwell St Giles 1813-1868

Grove St James 1832-1926

Hampstead Norreys St Mary 1598-1626 and 1666-1820

Hamstead Marshall St Mary 1772-1812

Hatford St George/ Holy Trinity 1813-1873

Hurst St Nicholas 1767-1812

Littleworth Holy Ascension 1839-1909

North Moreton All Saints 1880-1996

Radley St James the Great 1813-1826 and 1878-1981

Reading London Road Cemetery (burials in consecrated ground) 1857-1858

Reading London Road Cemetery (burials in unconsecrated ground) 1856-1863

Reading St Mary 1749-1767

Sandhurst St Michael 1603-1696 and 1769-1812 (BTs)

South Moreton St John the Baptist 1813-1948

Uffington St Mary 1813-1836

Wantage SS Peter & Paul 1813-1828 and 1852-1863

Wokingham Free Church Burial Ground 1954-1981

Berkshire Marriage Index update

(if you have any questions regarding this index contact Sue

Matthews, 83 Curtis Avenue, Abingdon, Oxon OX14 3UW.)

Binfield All Saints 1538-1837

Bisham 1561-1837

Bradfield St Andrew 1545-1837

Chaddleworth St Andrew 1539-1837

Cookham Holy Trinity 1563-1837

Hampstead Marshall 1676-1837

Kintbury St Mary 1557-1837

St George's Chapel Windsor 1629-1753

Shottesbrooke St John the Baptist 1556-1837

Warfield 1569-1837

Wargrave St Mary 1600-1837

Winterbourne St James the Less 1564-1837

Q and A with Jean

Jean Debney

A problem with a birth certificate

Q John Hawthorne (1682) from Reading, Berkshire writes that his cousin Nevil's younger brother Terry, was born and his birth registered in 1934. However, when their parents decided to have the boys christened they discovered they had forgotten to register Nevil's birth on 12 September 1927. After a visit by their father to a Commissioner of Oaths the necessary birth certificate was obtained. But the certificate created a further problem as his father registered the birth as 15 April (his sister's birthday) - so now he has two birthdays - one in April and the other in September!

According to my reference book, after six months a birth can only be registered in exceptional circumstances. What proof was required to obtain this certificate?

A Reading Register Office advised me that, in order to register a birth any time after the statutory six weeks, proof of birth has to be obtained, under oath, from a midwife or doctor present at the time and who knew the facts. This information is sent to the General Register Office before the local Register Office can issue the appropriate birth certificate with the words: 'Issued on the Authority of the Registrar General' in the space on the right hand side of the certificate. This late registration will be indexed in the appropriate quarter in 1934.

Regarding the incorrect date, this can only be amended in the presence of the Superintendent Registrar and with a sworn affidavit. A straight line is drawn through the date without obscuring it and the correct date added in the right hand column and initialled by the official making the amendment.

Triplicate and duplicate marriage certificates

Q Sally Ritchie (3321), Caversham, Reading says that she has three marriage certificates with different dates but apparently for the same couple.

1. 1879 - Newcastle on Tyne Parish Church: Hunter Scorer, 23, ba, clerk of Gladstone Terrace, son of William Hunter S, builder & Sarah Gilroy, 18, sp of Buxton St, dau of William G, Inn Keeper - after Banns.

2. 1884 - Stockton Parish Church, Durham: Hunter S, 28, ba, clerk of Newcastle-o-T. son (S/A) & Sarah Ann Bagley, 25, sp of Stockton-on-Tees, dau Robert B, Miller - by licence.

3. 1887 - Darlington Register Office, Durham: Hunter S, 30, ba, clerk of Consett, Lanchester, son (S/A) & Sarah Ann B, 27, sp of 5 Cobden St, Darlington, dau Robt B, Corn merchant - by Certificate. Signed by the Registrar and Superintendent Registrar.

In an attempt to solve the riddle I searched the death indexes to 1887 but was unable to trace an entry for Sarah or their daughter, Amy E Scorer, who are recorded with Hunter in the 1881 census. Both Hunter and Sarah are 'single' in marriages 2 and 3, although Sarah was 'Sarah Ann' with a different surname, father's name and occupation. Hunter and Sarah Ann (Bagley) subsequently had a second daughter, also called Amy! My question is 'Why marry the same person twice?'

A Neither I nor the Register Office have any idea what was going on here. There is a possibility that the first marriage in 1879 was null and void because the bride was under age and hadn't obtained parental permission:

which might explain the missing death registration but not their entry, with their baby daughter, in the 1881 census. In the first certificate, William Gilroy is both the bride's father and a witness and in the second and third the bride has the same first name plus 'Ann', a different surname, father and his occupation. The presence of the Superintendent Registrar at the third marriage also suggests an irregularity in a previous marriage.

Marriages 1 and 2 are in parish churches by Banns and Licence respectively, but 3 is in the register office by 'Certificate'. The latter, the civil equivalent to church banns, was issued by the Superintendent Registrar to enable a couple to marry in an Anglican Church, non-conformist chapel or the Register Office itself and the details recorded in a Marriage Notice Book.

Tracing the birth or baptism of Sarah Gilroy, daughter of William the inn keeper, or Sarah Ann Bagley, daughter of Robert the miller or corn merchant, may possibly suggest an illegitimate birth and an invented 'father of the bride'. Although, from the ages recorded, the estimated year of birth for Hunter is relatively constant, Sarah alias Sarah Ann's varies.

And, finally, do any of our members have any further suggestions to help solve this puzzle?

Postscript: I have two copy marriage certificates for my uncle. The first was issued in September 1935 because, impatient for their mothers to make up their minds about the wedding, they took a taxi in their lunch hour and got married in the local register office with two passers-by as witnesses. They returned to their own homes but eventually confessed to their fathers, but not their mothers who arranged a white wedding in the local Methodist Church for the following July, 1936. The minister co-operated in the subterfuge and issued a church 'certificate' with identical details but had crossed out "When Married" and substituted 'Marriage solemnised'. He also signed a written statement on the back to 'certify' that 'the religious ceremony of marriage ... took place before me ... [and] the certificate of civil marriage ... [is] accepted by me as sufficient proof for the performance of the religious ceremony'. No-one noticed any changes in the words of the marriage ceremony and the mothers were happy!

Right: Marriage certificate of Hunter Scorer and Sarah Ann Bagley, 2 November 1884

1884. Marriage solemnized at the parish church in the parish of <i>St. Andrew's</i> in the County of <i>Devon</i>								
No.	When Married.	Name and Surname.	Age.	Condition.	Rank or Profession.	Residence at the time of Marriage.	Father's Name and Surname.	Rank or Profession of Father.
119	Nov 2 1884	Hunter Scorer Sarah Ann Bagley	28 (1856) 25 (1859)	Bachelor Spinster	Black -	Newcastle on Tyne Stapleton on Tees	William Hunter Scorer Robert Bagley	Builder Miller
Married in the <i>Parish Church of St. Andrew's</i> according to the rites and Ceremonies of the Established Church, by <i>Licence</i> or otherwise by us,								
This Marriage was solemnized between us,			<i>Hunter Scorer</i> <i>Sarah Ann Bagley</i>		In the Presence of us, <i>Matthew Hill</i> <i>Sebastian Elizabeth Bird</i> <i>F. C. Finch Assistant Vicar</i>			

Right: Marriage certificate of Hunter Scorer and Sarah Ann Bagley, 6 July 1887

1887. Marriage solemnized at the Register Office in the district of <i>Barlinton</i> in the County of <i>Devon</i>								
No.	When Married.	Name and Surname.	Age.	Condition.	Rank or Profession.	Residence at the time of Marriage.	Father's Name and Surname.	Rank or Profession of Father.
5	18th 1887	Hunter Scorer Sarah Ann Bagley	30 (1857) 27 (1860)	Bachelor Spinster	Black -	Consett Lanchester Stobden Street Barlinton	William Hunter Scorer Robert Bagley	Builder Corn Merchant
Married in the <i>Register Office</i> according to the Rites and Ceremonies of the <i>Established Church</i> by <i>Certificate</i> or otherwise by us,								
This Marriage was solemnized between us,			<i>Hunter Scorer</i> <i>Sarah Ann Bagley</i>		In the Presence of us, <i>John P. Pearson</i> <i>M. Richardson</i> <i>Chas. H. Leach Registrar</i> <i>William Hodgson</i> <i>Superintendent Registrar</i>			

The No.1 Supplier to Genealogists for Microfiche Readers
Why You Need A Microfiche Reader

Contrary to popular belief, not all information is available on CD.
There is a vast amount of research and records that are only available on microfiche. The information on a microfiche compliments that on a CD.

A microfiche is often cheaper than a CD. Microfiches are available to search small areas of information whereas a CD you have to search a huge complicated database.

Most microfiches are copies of the original documents. You can check what the original documents actually showed – very useful in the case of name changes, spelling mistakes or not clearly written details. Microfiche readers are small and compact, user friendly – switch on, insert the microfiche and you are on your way.



M.W.MICROFILM SUPPLIES, 18 Watling Place, Houghton Regis, Dunstable, LU5 5DP
www.mw-microfilm.co.uk. E-mail: Margaret@mw-microfilm.co.uk. Tel/Fax 01582 867045

READING & DISTRICT CIGARETTE CARD & POSTCARD CLUB

GIANT POSTCARD & CIGARETTE CARD FAIR

Sunday, July 3rd, 2005

at RIVERMEAD LEISURE CENTRE

RICHFIELD AVENUE, READING

1 Mile walk or taxi from Reading Railway Station. Or if using M4, exit at Junction 11, follow signs to Town Centre, but then continue towards Caversham and the Rivermead Leisure Centre.

90 Dealers, 155 Tables

The dealers will have for sale tens of thousands of topographical postcards from 1900 onwards, showing churches, buildings, street scenes in towns and villages throughout the UK., and Social History cards, and many other themes

There will also be masses of cigarette cards as well, if you are a collector.

A wonderful way to enhance interest in your own Family History

IF YOU HAVE NEVER BEEN TO A BIG POSTCARD FAIR BEFORE,

PLEASE COME ALONG, YOU WILL BE AMAZED

Admission : 10.00 am – 4.30 pm. £1.00 Ample car parking

For further details ring The Secretary on 0118 978 4499

LARGEST STOCKIST OF BRANDED LADIES GOLF CLOTHES

Oakland Park Golf Club

- 18 Hole Golf Course
- Driving Range
- Superb, Well stocked Pro Shop
- Societies - Green Fees
- Membership Available

01494 871277

www.oaklandparkgolf.co.uk

Reynolds Rd, Chalfont St Giles Bucks HP8 4LW

Raymond's Original Pollbooks

Thousands of names! Were your ancestors amongst them? These facsimiles of rare pollbooks and electoral registers list voters at Parliamentary elections of the eighteenth and nineteenth centuries. They are invaluable sources for tracing the distribution of family names over wide areas. Volumes currently available are:

London 1768	£14.50	Suffolk 1710	£14.25
Westminster 1774	£19.00	Suffolk 1790	£14.
Westminster 1818	£23.50	Yorkshire 1741	£24.00
Westminster 1841	£19.00	Yorkshire 1807	
Norfolk 1768	£18.50	W Riding 1825	£24.50
Norfolk 1806	£17.50	Hull 1835	£6.50
Norfolk 1817	£18.00		
Somerset (Electoral registers)			
East 1832	£19.00		
West 1832	£19.00		

S A & M J Raymond

PO Box 35, Exeter EX1 3YZ

Tel: (01392) 252193 email: samjaymond@btopenworld.com

Gleanings from exchange magazines

Daphne Spurling

Care of Photographs including slides
(Shropshire FHS, Vol 25, Part 3, Sept 2004)

Computers – God Bless ‘em Preserving those archives. (Shropshire FHS, Vol 25, Part 3, Sept 2004)

Emigration Articles in this issue cover emigration to Australia and New Zealand, America, and within the British Isles. (Oxfordshire FHS, Vol 18, No 2, August 2004)

What’s in a Name? An account of the traditional Scottish naming patterns. (Manchester and Lancashire FHS, Vol 40, No 3)

Keep your Computers Clean and Safe Covers viruses, firewalls, spyware, backing up data and internet scams. (Manchester and Lancashire FHS, Vol 40, No 3)

Kith and Kin: Christian Names Summary of talk based on statistical analysis of names appearing in various records from fourteenth-century. *Banyan Tree*, East Yorkshire FHS, No 100, Oct 2004)

Symbolism in Gravestone Art A few more common symbols (such as scythe, and poppy) and their generally accepted meanings. (Nottinghamshire FHS, Vol 11, No 5, October 2004)

Badingham Long section (13 pages) on this village and church with many names. (Suffolk FHS, Vol 30, No 2, Sept 2004)

Quakers in the Exchequer and Ecclesiastical Courts Names during the 1696 to 1731 period. (Suffolk FHS, Vol 30, No 2, Sept 2004)

A Tour of Suffolk Villages – Washbrook Many names. (Suffolk FHS, Vol 30, No 2, Sept 2004)

Genes and Genealogy of the Maternal Inheritance Mitochondrial DNA in the author’s family (Suffolk FHS, Vol 30, No 2, Sept 2004)

Starting Writing: Family History Experiences with the Open University 12 week course. East of London FHS, No 104, Autumn 2004)

Know Your Parish: Stockton-On-Tees Article first published in 1988, a few names. (Cleveland FHS, Vol 9, No 5, Jan 2005)

Destination Auckland: Passenger shipping 1915-1921. Detailed article. (*The New Zealand Genealogist*, Vol 35, No 290, Nov/Dec 2004)

Immigrant information at Archives New Zealand (*The New Zealand Genealogist*, Vol 35, No 290, Nov/Dec 2004)

An Oldham neighbourhood 1861-1881 Analysis of population, birthplaces, occupations, children and education, population and occupation of under 18s, socio-economic groupings, and widows and widowers. Lists surnames found in 1861 and 1881 census pages. (*The Manchester Genealogist*, Vol 40, No 4, 2004)

Send your letters or articles: by email to Editor@berksfhs.co.uk or The Editor, 5 Wren Close, Burghfield Common, Berkshire RG7 3PF



Rising Sun Hotel, Burghfield

Mrs Susan Woods, 43 Pine Grove, Church Crookham, Fleet, Hampshire GU52 6BQ

I have found amongst some old photographs a postcard of the 'Rising Sun' Hotel, Burghfield. On the reverse is printed 'situated on high ground, gravel soil, amongst the Pines, and especially recommended for visitors. Trap can meet any train at Mortimer Station. AE Mann, Proprietor'. Alfred Edward Mann married my great-aunt in 1923 and from family photographs I have concluded that he took over as proprietor from a Mr Young sometime after 1923, although I suspect the photographs I have were taken in the early 1930s. If anyone has some knowledge of the hotel, or the families who ran it I would be delighted to hear from them.

Acknowledging letters

Patricia Ford, Clifton Lane, Tamworth

Could my experience act as a reminder to fellow members to kindly acknowledge, however briefly, any information sent to them? Through the Society website I learned of two people researching the same surname as me, so I wrote to them, via the proper channels enclosing a stamped addressed envelope. I heard from both, enthusiastically asking for information from me. I checked relevant details and wrote an A4 letter to both of them with new information and saying I would be pleased to help with any further queries. As this was many months ago I feel enough time has elapsed for an acknowledgement, and I am left feeling that I would not repeat this in the future, which seems a shame.

Redcoats from the Wardrobe

Arthur F Coles, 506 Mackay Street, Pembroke, Ontario, Canada K8A 1E6

I did enjoy the article on Redcoats in the Wardrobe in the December issue of the Berkshire Family Historian. However, there is one small error which I think needs correcting. The ship which conveyed a battalion to Halifax was in fact the *Pavonia* (not *Paronia*). I have researched this vessel, as my grandparents were on board for that voyage. Two years ago I was inspired to write a short article for the Oxfordshire Family Historian. The principal character became a Berkshire resident after serving for 19 years in the Royal Berkshire Regiment even though he was originally from Oxfordshire. Some of his female descendants still reside in the Reading area, as do two of my surviving brothers. An interesting series of family events resulted from that *Pavonia* voyage. My father was then born in Halifax but eventually returned to Reading where I was born. Thirty-five years later my daughter was born in Canada. Then, by a quirk of fate, her own daughter was born in Salisbury whilst she was a temporary resident there.

William Waite and Rebecca Turner

Robert Waite, 18a Lower Road, Chinnor, Oxon OX39 4DT

All my ancestry seems to have come from Wiltshire but there appears to be a major Berkshire connection with the marriage at Marlborough of William Waite to Rebecca Turner in 1686. His baptism is obviously the key to an earlier family but in Wiltshire there's not a close enough date to confirm this other than a few entries around 1654/5, one of which could be the missing link. This is where the Berkshire involvement seems likely with the baptism of a William Waite (father William) in 1664.

There is no immediate relationship with William in Hungerford at or near that time although there was (according to parish records) a major 'colony' bearing that name in the town from 1560 to 1637 but then there is a gap in the Waite records until William is recorded in 1664. No siblings have been found nor a marriage that could establish the issue. The last baptism recorded prior to 1664 and of a William Waite is in 1631/2, an issue probably of a marriage recorded in 1626/7. Some of the baptisms give an alias to the Waite name of Blackeden but not in the later records...mostly in the sixteenth century.

The 1664 connection to the marriage in Marlborough of 1686 seems also to be confirmed by the baptism of a child to a William in 1687/8 (Hungerford), possibly the first of the union. Later children are baptised in Woodborough, Wiltshire. If others researching this name could help I would be delighted.

Goring Primary School – 1855-2005

Compilation is underway of what will be a fascinating local history book, to be published in Spring 2005: the history of Goring Primary School which is celebrating its 150th anniversary this year.

In assembling the photographs and illustrations that people have kindly lent us, we find we are missing photographs for two of the former headmasters of the school – Mr John Wilson (headmaster from 1926 to 1950) and Mr Trevor Owen (from 1957 to 1963). Does anyone out there have a photograph of either of these two crucial figures in the school's history? If so we would be delighted to hear from you, or indeed if you have any photographs or items relating to the School's early years. All items supplied will be treated with care and returned safely to their owners.

For further information or if you can help with the requests above, please contact Michael Anderson (01491 872921) or Helen Turner (01491 873668, or email: heturner@tinyworld.co.uk).

Wiltshire's Nimrod Indexes

Marriage Database – All Wilts 1538-1837, Wills Database 1242-1887, Varied Index Database 1242-1900, 1851 Census Database – All Wilts.

For each index: Individual person searches £3.00. Complete surname print-outs from £8.00 – 10% discount on index searches for WFHS members
Location of Documents
Guides for all 327 Wiltshire parishes.

Other limited personal research work undertaken.
David & Jenny Carter,
Docton Court, 2 Myrtle Street, Appledore, Bideford, Devon EX39 1PH
Email:
<enquiries@nimrodindex.co.uk>

Now with over one million entries in our databases!

Bookends

Jean Debney

Berkshire records and local history

Berkshire Poll Book, 1727 - A Eureka Publication (2004) A5, purple flexiback, 68 pp. Price £5.35 UK, overseas surface £5.85, airmail £7.00

Poll books are notoriously difficult to search as they are unindexed and listed in different ways. Until 1872, when the secret poll was introduced, elections were very public and subject to a great deal of coercion and corruption. In the eighteenth century, the franchise was limited to males over 21 with freehold property worth over 40s a year (to lease) in the county or who, in the towns, were freemen, burgesses or paid 'scot and lot' (local taxes). In 1727 only 1429 men in Berkshire had the necessary qualifications to vote in the Parliamentary election held in Abingdon on Wednesday, 30 August.

The original poll book is in the Oxfordshire Record Office and the transcript is arranged alphabetically by place from Abingdon to Yattendon, with Grove unexpectedly at the end, plus a surname index. Each entry includes the forename, surname, place of residence (not always in Berkshire) and the initial/s of the candidate/s chosen.

Lyson's Magna Britannia – Berkshire (1806) (Archive CD Books, 2002) ISBN: 1-84551-153-0. Price £13.50 UK, airmail £14.85

Kelly's Directory – Berkshire 1903 (Archive CD Books, 2003) ISBN 1-84551-152-2. Price £14.75 UK, and airmail £16.15

The Lyson brothers intended writing the history of every English county. Unfortunately they failed but, because they started at the beginning of alphabet, Berkshire was produced.

Both CDS are good sources of fascinating local information presented in clear facsimile format. To read the PDF files you need Adobe Acrobat Reader installed, system requirements Windows 95, 98, 2000, NT or better or Apple Mackintosh.

Reading Borough Police Records: (1) 1865-1880 & (2) 1881-1904 compiled by Carol Richmond (Oxfordshire Black Sheep Publication, 2004) A5, blue and pink flexibacks, 38pp and 60pp (plus 6pp additional information). ISBN: 0-9546844-4-3 and 0-9546844-5-1. Price £4.00 UK, overseas surface £4.35 and airmail £5.30

These two indexed volumes contain an alphabetical list of the service details, etc. of 216 and 198 Officers respectively of the Reading Borough Police Force, formed in 1836 and merged with others to form the Thames Valley Police Force in 1968. The original chronological 'Officer Registers' are in the Thames Valley Police Museum, Sulhampstead.

Hampshire local history

Tadley during my time & before -Tadley God Help Us: Ernest W. Kimber (n.d, prob.1983 reprint) A5, pl. blue flexiback, illustrations, 20 pp. Price £1.90 UK, overseas surface £2.15 and airmail £2.85

Tadley & District Local History Society (1999, 5th impression (including minor alterations) 2001) 6.8" x 10" (175mm x 255mm) 154 pp ISBN 0-9537043-0-0. Price £9.35 UK, £10.15 Overseas surface, £12.70

An amazing A-Z of information about Tadley and the places round it, researched, compiled and published by members of the LHS. Illustrated with a map, line drawings and photographs.

Around Tadley – People and Places - S/A (2001) ISBN 0-9537043-2-7. Price £10.35 UK, £11.15 Overseas surface, £13.70

This is a companion volume to the above containing over 300 photographs, each with informative notes. These three volumes are a 'must-have' for anyone living in or with ancestors from the area just beyond the southern boundary of Berkshire..

Oxford records and local history

The People of Rotherfield Greys – Eureka Publications (2004). Oxfordshire parish adjacent to Henley-on-Thames and seven miles from Reading. 3 x A5 vols, gold card flexiback. Each includes an introduction, parish map and surname index

-Vol.1 (2003) 35 pp; Price 3.15 UK, overseas inland £3.55. & airmail £4.55.

Vestry meeting attendees 1749, Poll Book 1754 & 1862, Land Tax Assessments 1785 & 1832, subscription for relief of the poor & a list of poor inhabitants 1793, census return 1811, parish survey 1815 (including map), poor inhabitants 1820 and trade directories 1848, 1853, 1863 & 1873.

Vol.2 (2004) , 40 pp; Price £3.00 UK, overseas inland £3.40. and airmail £4.35.

Poor law settlement certificates, removal orders & miscellaneous papers re bastardy, militia service, apprenticeship and a confinement order to a lunatic asylum.

Vol.3 (2004) 44 pp; Price £3.00 UK, overseas inland £3.40. and airmail £4.35. Poor law settlement examinations. Vestry meeting attendees 1749, Poll Book 1754 & 1862, Land Tax Assessments 1785 and 1832, subscription for relief of the poor and a list of poor inhabitants 1793, census return 1811, parish survey 1815 (including map), poor inhabitants 1820 and trade directories 1848, 1853, 1863 & 1873.

Research aids

Immigrants and Aliens - A Guide to sources on UK immigration and citizenship, Roger Kershaw & Mark Pearsall (The National Archives (PRO), 2nd edn 2004) B5, flexiback, 141 pp, indexed ISBN 1-903365-62-7. Price £13.50 UK, overseas surface £14.35 and airmail £17.05

Information about tracing this class of citizen from sixteenth to twentieth centuries from sources in TNA (until 2003, the Public Record Office). Also lists records in various county archives (with addresses), a list of Naturalisation Certificates 1870-1948 and 'Useful address & websites' of specialist societies, etc with overseas interests.

Wills and Other Probate Records, Karen Grannum & Nigel Taylor ((The National Archives (PRO), 2nd edn 2004) B5, flexiback, 220 pp, indexed ISBN 1-903365-49-X. Price £17.00 UK, overseas surface £18.15 and airmail £21.85

A new title which brings together all the vital information about wills and all other related documents, 14th century to date. Explains the court systems pre- and post-1858, includes a table of printed indexes of wills & administrations in the English Prerogative Courts and a glossary of legal terms, further reading and an index.

All the above books are available from the Bookshop and through Mail Order

Members' interests

Compiled by Bob Plumridge
 Bob.Plumridge@ntlworld.com

Members submitting their interests:

- 1224 Jones Mr MCN** White Cottage 44 Sandhurst Road Wokingham Berkshire RG40 3JD
- 3447 Osmond Mr DF** Langleigh Colliers Lane Peppard Common Henley-on-Thames Oxon RG9 5LT
- 3921 Scissons Mr PA** 17 North Clark Avenue Newcastle Wyoming 82701 U S
- 4141 Mann Miss PD** 4 Waddington Avenue Old Coulsdon Surrey CR5 1QE
- 4358 Carter Mr GJ & Mrs PM** 3 Leonard Cheshire Close Boscombe Down Amesbury Wiltshire SP4 7RN
- 4360 Croxford Mr P & Mrs G** 53 Swanborough Drive Brighton East Sussex BN2 5PJ
- 5409 Stevens Mrs J** Mole Park Cottage Sindlesham Road Arborfield Berks RG2 9JQ
- 5485 Millard Mr CA** Foxton School Lane

No	Name	Place	Code	Date
5647	A(L)WCOCK	Fletching	SXE	pre 1780
5647	AYRES	Witney	OXF	pre 1810
1224	BAGGS	Reading St. Giles	BRK	19c
4141	BELCHER	Stanford	BRK	pre 1600
4141	BELCHER	Denchworth	BRK	pre 1600
4141	BEN(N)ET(T)	Stanford	BRK	pre 1700
1224	BETTS	Henley	OXF	17c
5485	BLACKMORE	Bradninch	DEV	1800-1840
5666	BOLTON	Bucklebury	BRK	1760-1800
5666	BOLTON	Henley	OXF	1800-1850
5682	BOLTON	Peasmore	BRK	1750-1950
5682	BOLTON	Staines	SRY	1900-2003
5682	BOLTON	East Ilsley	BRK	1600-1750
5682	BOLTON	Beedon	BRK	1600-1800
5647	BRAYNE	Brighton	SXE	pre 1825
4141	BRI(Y)ANT(S)	Thatcham	BRK	pre 1850

Burghfield Common Reading Berks RG7 3ES

- 5587 Whistler Ms D** #102-1867 West 3rd Avenue Vancouver British Columbia Canada V6J 1K9
- 5622 Ilett Mr R** 20 Chaucer Way Wokingham Berks RG41 3BG
- 5626 Collins Mr B & Mrs C** 34 Eddington Road Bracknell Berks RG12 8GF
- 5647 Tamkin Mr K & Mrs B** 12 The Dittons Finchampstead Wokingham Berks RG40 3RF
- 5654 Faulkner Mr AD** 43 Bushbarns Cheshunt Hertfordshire EN7 6EB
- 5666 Bolton Mr K** 42 Chichester Road Edmonton London N9 9DQ
- 5668 Clayton Ms C** 59 Victoria Road Tilehurst Reading Berks RG31 5AB
- 5682 Bolton Mr P** 84 Barn Meadow Bamber Bridge Preston PR5 8EA
- 5707 Sutton Mr J** 54 Church Road Earley Reading Berks RG6 1HT
- 5734 Keene Mr M** Bramley Cottage Dorchester Road Frampton Dorchester Dorset DT2 9NF

No	Name	Place	Code	Date
4360	BROX(CKS)	Tilehurst	BRK	1750-1850
4360	BROX(CKS)	Sulham	BRK	1750-1850
5647	BROWN	Horsted Keynes	SXE	pre 1825
5626	CABON	All	LIN	1800-1900
5626	CABON	All	ERY	1780-1900
4141	CANFIELD	Shrivenham	BRK	pre 1850
4141	CANFIELD	All	BRK	All
4141	CANFIELD	Kempsford	GLS	1800-1900
4141	CANFIELD	Kingsclere	HAM	1800-1900
4141	CHAMP(E)	East Hendred	BRK	pre 1700
1224	CLANVIL	Dorchester	OXF	18c
5734	CLEWS	Hammersmith	MDX	pre 1900
5626	COLLINS	Sunbury on Thames	MDX	1700-1900
4141	COLLINS	Stanford	BRK	pre 1700
5647	COL(E)MAN	Bexhill	SXE	pre 1825
4141	COOPER	Thatcham	BRK	pre 1800

No	Name	Place	Code	Date	No	Name	Place	Code	Date
4141	CULLEY(IE)	Stanford	BRK	pre 1700	1224	HARMAN	Cogges	OXF	18c
4141	CUSSELL	Thatcham	BRK	pre 1800	5647	HATTER	All	WIL	pre 1850
1224	DREWETT	Headington	OXF	17c	4141	HOWELL	Thatcham	BRK	pre 1800
1224	DREWETT	Henley on Thames			4360	HUNT	Childrey	OXF	1750-1850
			OXF	18c	4360	HUNT	Long Wittenham	OXF	1750-1850
1224	DREWETT	Stanton St. John	OXF	17c	5622	ILLETT	All	CAM	1680-1845
4360	DURBRIDGE	Kingsclere	HAM	1750-1850	5622	ILOTT	All	CAM	1680-1845
4360	DURBRIDGE	Thatcham	BRK	1750-1850	5647	ISTED	Ashburham	SXE	pre 1710
5647	DYNELEY	All	YKS	pre 1750	5485	JARRETT	Strood	KEN	1800-1840
5647	EDGINGTON	Horsham	SXW	pre 1800	5647	JOHNSON	Ashburham	SXE	pre 1815
5707	ELVIN	Aslacton	NFK	pre 1850	5734	JONES	Clapham	SRY	pre 1830
5707	ELVIN	Gt Moulton	NFK	pre 1860	5485	JONES	Chelsea	LDN	1800-1840
1224	EMMETT	Harpsden	OXF	18c	5734	KEENE	Hammersmith	MDX	pre 1850
5654	FALKNER	Carlby	LIN	pre 1730	5734	KEENE	Reading	BRK	pre 1850
1224	FIPPEES	Stanton St. John	OXF	17c	5734	KEENE	Weybridge	SRY	pre 1850
1224	FORD	Dorchester	OXF	18c	5647	KING	Shillingford	OXF	pre 1760
5647	FRENCH	Bexhill	SXE	pre 1830	5622	LEWIS	Edmonton	LDN	All
5647	FROST	Wells	SOM	pre 1850	5622	LEWIS	West Ham	LDN	All
4141	FULBROOK(E)				5647	LOVELAND	Chilworth	SRY	pre 1830
		Thatcham	BRK	pre 1600	1224	LOWE			
4360	GATER	Reading	BRK	1750-1850			Burcot with Dorchester	OXF	18c
4360	GATER	Tilehurst	BRK	1750-1850	1224	LOWE	Henley on Thames	OXF	18c
5647	GIBSON	Bexhill	SXE	pre 1770	1224	LUSH	Donhead St. Mary	WIL	17c
5707	GOOSE	Norwich	NFK	pre 1910	1224	MARLOW	Reading	BRK	19C
1224	GOSNEY	Sutton Mandeville			1224	MARLOW			
5409	GRAY	All	BRK	1700+			Henley on Thames	OXF	19c
5654	GREENOUGH				1224	MARLOW	Old Windsor	BRK	18C
		Blewbury/Upton	BRK	pre 1730	5734	MATYEAR	Fulham	MDX	pre 1880
1224	GREENWAY	Dorchester	OXF	17c	4360	MAY	Wokingham	BRK	1750-1850
1224	GREENWAY	Cholsey	BRK	18c	4360	MAY	Heckfield	HAM	1750-1850
5654	GRINOFF	Blewbury/Upton	BRK	pre 1730	1224	MESSENGER			
5647	HAMBIDGE	Southrop	GLS	pre 1800			Henley on Thames	OXF	18c
4358	HAMMOND	Stowupland	SFK	1800-1900	5485	MILLARD	Horncastle	LIN	1750-1840
4358	HAMMOND	Stowmarket	SFK	1860+	5647	MYERS	Leeds	YKS	pre 1750
4141	HARDINGE	Stanford	BRK	pre 1700	1224	NASH	Wokingham	BRK	17c

No	Name	Place	Code	Date	No	Name	Place	Code	Date
1224	NASH	Henley-on-Thames	OXF	17c	1224	SMITH	Brompton	MDX	19c
1224	PARHAM	Donhead St. Mary	WIL	17c	4141	SPICER	Stanford in the V	BRK	pre 1700
1224	PARKER	Henley on Thames	OXF	17c	1224	STUBBLE	Wokingham	BRK	17c
1224	PARSONS	Old Windsor	BRK	18c	5707	SUTTON	Tivetshall	NFK	pre 1860
1224	PEBWORTH	Dorchester	OXF	18c	5647	TAMKIN	All	All	All
4141	PENSTONE	All	OXF	pre 1700	1224	TAYLOR	Rotherfield Grays	OXF	19c
4141	PENSTONE	All	BRK	pre 1700	5647	TOWNSLIGHT	Bath	SOM	pre 1830
4141	PENSTONE	Stanford in the Vale	BRK	pre 1700	5647	TUCKWELL	Southrop	GLS	pre 1740
1224	PERRIE	Harpsden	OXF	18c	5647	TYLER	Horsham	SXW	pre 1830
1224	PERRIE	Caversham	OXF	18c	5647	WALKER	Tewkesbury	GLS	pre 1740
5485	PERRIN	Strood	KEN	1800-1840	1224	WALTER(S)	Henley on Tham'	OXF	18c
5485	PERRIN	Aylesford	KEN	1750-1800	1224	WALTER(S)	Rotherfield Grays	OXF	18c
1224	PERRYMAN	Old Windsor	BRK	18c	5485	WEBB	Bucklebury	BRK	1750-1825
5647	PUTMAN	Uckfield	SXE	pre 1814	5485	WEBB	Thatcham	BRK	1825-1850
1224	PUTMAN	Reading	BRK	19c	4358	WELHAM	Combs	SFX	1870+
1224	RABBETS	Donhead St. Mary	WIL	17c	4358	WELHAM	Buxhall	SFK	1700+
1224	RATHALL	Harpsden	OXF	17c	1224	WERNHAM	Denham	BKM	19c
1224	RICHINGS	Reading	BRK	19c	1224	WERNHAM	Reading	BRK	19c
1224	RICHINGS	Henley on Thames	OXF	20c	1224	WERNHAM	Beenham	BRK	19c
5647	ROGERS	Dowdeswell	GLS	pre 1650	5647	WESTERN	Clerkenwell	MDX	pre 1850
5647	ROSE	Rusper	SXW	pre 1890	5647	WESTGATE	Brighton	SXE	pre 1820
5622	RUDLAND	West Ham	LDN	1850-1950	5647	WHEATLANDALL		SXW	pre 1840
5622	RUDLAND	All	CAM	1800-1900	5668	WHILEMAN	All	DBY	1870-1930
5734	RUFF	Oxford	OXF	pre 1830	5587	WHISTLER	All	All	All
5647	SAWYER	All	WIL	pre 1850	5587	WHISTLER	All	All	All
3921	SCISSONS	All	BRK	1800-1998	5668	WILEMAN	Earl Shilton	LEC	1700-1881
4360	SEARLE	Easthampstead	BRK	1750-1850	5668	WILEMAN	Measham	DBY	1700-1881
5647	SEARY	Marylebone	MDX	pre 1850	4141	WISE	Thatcham	BRK	pre 1850
5707	SELF	Tivetshall	NFK	pre-1820	5485	WRETHAM	Hayesden	KEN	1850-1880
5647	SHORT	Langford	OXF	pre 1750	5485	WRETHAM	Ashfield	SFK	1800-1850
5626	SIMPSON	Sutton	LIN	1780-1870	4360	YOUNG	Hampstead Norr'	BRK	1750-1850
5626	SIMPSON	Markby	LIN	1780-1870	4360	YOUNG	Chieveley	BRK	1750-1850
5485	SLIGHT	Bilsby	LIN	1750-1830					
4360	SMALLBONE(S)	Sherborne St.	HAM	1750-1850					
1224	SMITH	Reading	BRK	19c					
1224	SMITH	Chelsea	MDX	19c					



ABBHEY HOUSE HOTEL

118 Connaught Road
Reading RG30 2UF
(Off Tilehurst & Oxford
Roads, West Reading)

TEL: 0118 959 0549

FAX: 0118 956 9299

WEBSITE: www.fardellhotels.com

E-MAIL: ahh@fardellhotels.com

Situated centrally, 5 mins from city centre, close to all Business parks, Railway stations & Bus stops. M4 motorway, junctions 10, 11, & 12 only minutes away. Ample free parking.

Free 24hour broadband internet access.

All rooms standard en-suite, with tea/coffee making facilities, satellite t.v, trouser press, hairdryers & direct dial telephone.

★ Residents Bar.

Single Rooms from £45.00 • Double/Twin rooms from £60.00

(Includes Full English Breakfast, Service & VAT)

SOLO

Mailing Services Ltd

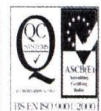
If a mailing house with a proven track record and an attitude that puts the customer first is important to you, come and talk to the people who listen and work to your schedule.

For the last four years we have offered the BFHS the very same guarantee enjoyed by all of our customers...



www.solo-uk.com

0118 941 0101



BFHS Research Centre

The Research Centre contains almost all the published 1851 census indexes of England and Wales; a fully fitted computer suite including the 1881 census of the United Kingdom, Vital Records Indexes, CD ROMs as well as many other county indexes. We also have continuous access to the internet, the 1901 census and thousands of books, fiche and transcripts. Your Research Centre supplements the Berkshire Record Office and the Berkshire local studies libraries; you will also find much information about other counties in England and Wales, Scotland, the Channel Islands, the Isle of Man and many overseas countries.

How to find us

Next door to the Berkshire Record Office, off Coley Avenue, close to the centre of Reading. Good parking, 15 minutes' walk from the main railway station, with buses passing close by. Follow the signs to the Berkshire Record Office.

Address

BFHS Research Centre, Yeomanry House,
131 Castle Hill, Reading, Berkshire RG1 7TJ.
Telephone 0118 950 9553

Research Centre and Reference Library tours

The Research Centre will close be closed on Easter Sunday, 27 March.

The tours for the next four months are:

- Monday 21 Mar 7.30pm–9.30pm
- Saturday 16 Apr 2.30pm–4.30pm
- Monday 16 May 7.30pm–9.30pm
- Saturday 18 Jun 2.30pm–4.30pm

Whether you are a member or just a visitor, these tours will show you what research and finding aids are available to enable you to make the most of the rich resources at the Research Centre.

Opening hours:

- Tuesday, Wednesday and Thursday from 10am to 4pm.
- Late opening on Tuesday from 7pm to 9.30pm
- Second and fourth Sunday of each month from 11am to 4pm.
- Second Sunday of every month 2pm to 4pm computer help is also available

Full details are available on our website: <www.berksfhs.org.uk>



The Computer Suite at the Research Centre



Research Centre and Berkshire Record Office

Birth Briefs Index

Birth Briefs are five-generation ancestral charts submitted by members of the Society. Fully completed charts contain the names and vital records (birth or christening, marriage and death or burial) of the member and up to 30 ancestors.

- You can search the index, currently 28,595 names, on the website or for £2 per surname by post.
- You can order a copy of a particular Birth Brief for £2. Quote the ID No. obtained from the website or from the postal search. The Birth Brief can be sent as a hard copy, in PAF Pedigree format or as a file in GEDCOM format.

Please post search requests and orders for copies to BFHS (BB), Yeomanry House, 131 Castle Hill, Reading RG1 7TJ. Mark your envelope BB and include the BB ID No. (if known). Enclose a sterling cheque, drawn on a UK bank, your email address and an A4 self-addressed envelope either stamped or containing two IRCs.

- You can contact the person submitting the Birth Brief, if they are still a member (see website). We will pass on a letter or email (if they have an email address – see website).

To contact the person submitting the Birth Brief: either send your letter with two unstamped envelopes, one self-addressed and one blank, with three IRCs (not stamps) to BFHS (BBxxxx) at Yeomanry House.

Or email your message to BBxxxx@berksfhs.org.uk (where xxxx is the BB ID No).

Berkshire Name Search

Berkshire Name Search consists of the following censuses and indexes:

1851 Census. Complete checked transcription of the 173,748 persons within Berkshire on 30 March 1851. Printouts are available for a surname search (listing all and giving district) on either the page or the household of a selected person. Also available on CD ROM.

1861 Census. Transcription has just started with 130,105 individuals to date; more districts will be added as available.

1871 Census. Transcription and index of 230,000 people now completed; checking ongoing and will be included as available. Printouts as 1851.

1881 Census. Complete transcription and index of 223,936 people.

Berkshire Marriage Index. Work in progress transcribing and checking pre-1837 registers. Includes 127,336 entries to date, see the *Berkshire Family Historian* or the Society website for the parishes and dates covered. Printouts of early entries only give dates and names of bride and groom; later entries included if from another parish or by licence.

Berkshire Burial Index. Work continues transcribing from burial registers, with over 363,000 entries to date. See the Society website or the *Berkshire Family Historian* for up-to-date contents. Some 50% of entries show all available data; the rest show – where available – name, age, abode, relationship, occupation and title together with a note indicating if there is further information such as date, place or cause of death etc. in the original record. An updated version of the index is available on CD.

Berkshire Strays Index. This dataset includes 12,000 people recorded in events taking place outside Berkshire if the person has given some reference to Berkshire. Strays records come from a variety of sources including the 1851 census of several neighbouring counties.

Berkshire Miscellaneous Index. This dataset is based on the former Berkshire Name Index and includes 100,279 records that were extracted

and submitted by individuals. When possible running sets (such as baptisms from a parish register) will be placed in specialist datasets leaving the disparate individual records and small datasets in this Miscellaneous Index. The amount of information available depends on the record.

Berkshire Name Index. This is the master index for all of the above indexes.

To search the Berkshire Name Index you may:

- do your own search at the Research Centre
- visit a BFHS stand at a family history fair
- request a postal search.

Postal Search

Send your request to Berkshire Name Search, BFHS (BNS), Yeomanry House, 131 Castle Hill, Reading RG1 7TJ enclosing a cheque for the charge together with your email address or an A4 sized stamped self-addressed envelope and two IRCs.

Charges

- To search the Berkshire Name Index send £2 per surname requested to obtain the number of entries in each census or index. This search will not provide any information from the records.
- To obtain the full details from the records printed on an A4 sheet (up to 25 entries or lines). We will advise the additional cost if more entries are found.
 - £2 per surname per requested database
 - £5 per surname to search all databases currently available (price will increase as more databases are included).

Records wanted

If you have records of any names that would fit into our Miscellaneous Index (event occurs within Berkshire) or Strays Index (event occurs outside Berkshire but person has Berkshire connections) please send them by post or email to:

- MiscIndex@berksfhs.org.uk, or Strays@berksfhs.org.uk
- BFHS, Yeomanry House, 131 Castle Hill, Reading RG1 7TJ labelling the envelope either BFHS (MiscIndex) or BFHS (Strays).

- Anglo-Scottish Family History Society 5
 Austin families convention 3
 Australian Congress on Genealogy 4
 Bailie family 16
 Berkshire Family History Society:
 AGM notice 2
 Berkshire Name Search 31
 Birth Briefs Index 30
 Branch programmes inside back cover
 and back cover
 Interests outside Berkshire 4
 Postal Searches 31
 Research Centre Library donations 4;
 guide, 30; news 6; thirtieth anniversary
 conference 4
 Berkshire Poll Book 1727, review 24
 Berkshire Record Office news 5
 Berkshire Regiment, Royal, letter 22
 Birch, William 15
 Boulton, Barry, on documents and indexes found
 at Reading Library 10-11
 Boyd, Mrs 16
 Bray family 8
 Burghfield, Rising Sun Hotel, 22
 Caldecott House, Abingdon 15-16
 Carew family 8
 Carte, Dr Thomas 15
 Census: 1881 and 1891 online 6
 Clark, Alderman A F 10-11
 Coles, Arthur F, on Royal Berkshire Regiment 22
 Coram (Thomas) Foundling Hospital 15
 De St Amand, Baron Walter 15
 Dils, Joan 6
 First World War medal records 3
 Ford, Patricia, letter 22
 General Register Office cewrtificates, problems
 with 17-18
 Gerlings, Charlotte, on Muriel Maplesden 10
 Gleanings from exchange magazines 21
 Golafre, Sir John 15
 Goring Primary School 23
 Guildhall Library, Corporation of London Records
 Office 2
 Hassell, John 8
 Hawthorne, John 17
 Hyde, Thomas 16
 Immigrants and Aliens, review 25
 Jackson, Alfred Francis 8, 9
 Jekyll, Gertrude 8
 Kelly's Directory – Berkshire 1903, review 24
 Kitson, Ian, on great-great-grandfather, 13-14
 Knox, Stuart Carnegie 9
 Lintall family 15-16
 Leveson-Gower, Arthur Francis 7
 Lutyens, Sir Edward 8
 Lyson's Magna Britannia – Berkshire, review
 24
 Mann, Alfred Edward 22
 Maplesden, Muriel, documents and indexes
 10-11
 Members' interests 26-28
 Migration records and memories 2
 More estate records 7
 More-Molyneux estate records 7
 Musson, William 16
 Newton, Hazel 9
 Old Bailey trials 2
 Ottershaw workhouse 9
 Oxford Undergraduate Diploma in local
 history anniversary 6
 Palmer, Lady, death 3
 Parkhurst Barracks 14
 Power, James 13-14
 Prisoners of War records 3
 Prisoners' records 5
 Reading Borough Police records, review 24
 Reading Library, documents and indexes found
 at 10-11
 Rayner, David, on Caldecott House, Abingdon
 15-16
 Ritchie, Sally 17
 Roffey, Henry, 7, 8
 Sandhurst Military College 8
 Somers family 8
 Sonning, the Deanery 8
 Stiff, Di, on Surrey History Centre 7-9
 Surrey and Middlesex manorial records 5
 Surrey History Centre 7-9
 Tadley, review of books on 24
 Taylor, John, Diaries of a Youthful Artist, review,
 25
 Tiller, Dr Kate 6
 Turner, Rebecca 23
 Turner, Helen, letter 23
 Waite, Robert, letter 23
 Waite, William 23
 West, Dr Martin 6
 Weston, William 7
 Wills and other Probate records, review 25
 Woods, Mrs Susan, on Rising Sun Hotel,
 Burghfield 22
 Worsfold, George 7

Programme Calendar 2005

Bracknell and Wokingham Branch

18 March Priestwood Community Centre, Priestwood Court Road, Bracknell, 7.15pm for 7.45pm
London, The Metropolitan Nightmare, Paul Blake

15 April *Many of us have London ancestors, or forebears who spent part of their life in the capital. From Chiswick to Charlton, Camberwell to Camden Town, find out how to get the best from London's many archive holdings.*

Maps and property records, Peter Park
The many different maps, plans and documents relating to land and property are some of the resources least utilised by family historians. Learn how to unlock some of these exciting links to your ancestors' past.

20 May Educational records, Richard Harvey
We often think of school records as resources from the nineteenth and twentieth centuries But some school and college records go back to the sixteenth century. The amount of detail present in surviving records may surprise you.

17 June Writing up your family history, Roy Stockdill
Your folders and files are full. You have found the 'black sheep' and lots more besides. How do you pull everything together and share all your findings with family and friends?

Computer Branch

The Oakwood Centre, Headley Road, Woodley, 7.15pm for 7.45pm

16 March Organising your PC files, Terry Wickenden
Files here, programs there, lost bits and bytes from everywhere.

20 April Digital photography, led by Stuart Mann
How to make the best use of your camera (non-digital and digital) with tips for photographing old documents in a record office as well as monumental inscriptions in a churchyard

15 June Berkshire Family History Society AGM followed by using Gedcom to exchange data between different family history programs

Newbury Branch

St Mary's Church Hall, Church Road, Shaw, Newbury, 7.30pm for 7.45pm

9 March Jack of Newbury, Dr David Peacock
Prominent local historian and author of a major work on John Winchcombe will discuss research about the Winchcombe family.

13 April Records of the seventeenth and eighteenth centuries, Michael Gandy

11 May A lighthearted look at old handwriting, John Hurley
I am sure that all family historians struggle at times with the handwriting in old records – a lighthearted look may be the best approach.

8 June Hannah Lightfoot – the Fair Quaker, Sheila Mitchell
Reputedly one of the most beautiful women of her time, mystery surrounds the fair Hannah and her liaison with the Prince of Wales

See overleaf for the remainder of the programme for March to June 2005.

Programme Calendar 2005

continued from overpage

Reading Branch

The Church of Jesus Christ of Latter-day Saints, Church End Lane, Tilehurst, Reading, 7.15pm for 7.45pm

- 31 March A Nest of Hornecks, Moira Bonnington
Elopements, divorces, duels and other dastardly deeds.
- 28 April Annual meeting followed by members' stories and anecdotes
Short talks by members who will reveal some of their family's more interesting stories
- 26 May *Berkshire Record Office - an update*
Learn what's happening at our local Record Office.
- 30 June Dorchester and Wallingford, Hilary Thompson

Vale of White Horse Branch

Long Furlong Community Centre, Boulter Drive, Abingdon, 7.15pm for 7.30pm

- 14 March Parish Chest, Mike Priddey
The contents of the Parish chest and how the various documents can assist your research
- 11 April Tables into counties
Members discussion groups on researching in various parts of the country
- 9 May Visit to the Oxfordshire Record Office. Meet at the Record Office at 7.15pm.
- 13 June Name lists of the seventeenth and eighteenth centuries, Michael Gandy
Tithe and tax lists

Windsor, Slough and Maidenhead Branch

Christ Church United Reformed Church, William Street, Windsor, 7.30pm for 7.45pm

- 29 March Miscellany – Q and A session for those who have hit a brick wall.
Update on previous queries, also a mixture of hands-on and light-hearted puzzles to test your family history skills and ingenuity.
- 26 April Berkshire Beyond the Obvious, Trevor Ottlewski
Unusual places and unexpected objects are there if only we look around us and keep our eyes open.
- 31 May Computer evening looking at the many records online, Chad Hanna and Gillian Stevens
Births, marriages and deaths, wills, photographs, maps, and parish registers. Follows a short AGM.
- 28 June The Royal Mail Archives. 'Outreach' staff member
History of the Royal Mail and the available records in the archive dating from 1636 to the present day.